

Parish Magazine

Serving the Church Communities of Puddletown, Tolpuddle, Milborne St Andrew
and Dewlish

APRIL 2020

80p





HARDY TREE

SURGEONS

EST. 1988

The Professional Arboricultural Service

Specialising in Tree Surgery, Landscaping Garden Management & Utilities
Throughout out the South

- Tree Care for Residential, Commercial, Forestry, Agricultural & Estates
- Tree Surveys, Inspections, Reports & Consultancy
- Highways, Roads & Street Clearance
- Dismantling & Felling
- Pollarding & Veteran Tree Management
- Reductions, Thinning, Pruning & Reshaping
- Crown Lifting & Dead Wooding
- Site Clearance, Garden & Hedge Maintenance
- Tree & Hedge Planting
- Stump Removal
- Logs & Wood Chippings
- TPO & Conservation Applications
- Fully Insured – £10 million Public Indemnity
- Fully Qualified – NPTC
- Tree Works to BSI 3998 : 2010 Standards
- Friendly, Reliable & Efficient Service
- Free Quotations



24 Hour Emergency Call Out

Tel. 01300 341471 ~ Mob. 07774 477435

www.hardytree.co.uk

The Office @ Unit 1 Charminster Farm Industrial Estate, Wanchard Lane, Charminster, Dorchester, Dorset DT2 9RP

email : nickie@hardytree.co.uk

Contact Details		
Editor	The Revd Sarah Hillman	editor@parishmagazine.org.uk
Advertising Manager	Marion Bishop	01305 848 427 tolpuddle@parishmagazine.org.uk
Dewlish Editor	Geoff Bull	01258 837 316 dewlish@parishmagazine.org.uk
Milborne Editor	John Wright	01258 839 090 milborne@parishmagazine.org.uk
Puddletown Editor	Emma Hughes	01305 849 039 puddletown@parishmagazine.org.uk
Tolpuddle Editor	Marion Bishop	01305 848 427 tolpuddle@parishmagazine.org.uk
Distribution Co-ordinators	Jan O'Mara	01305 848 551
	Clare Campbell	01305 849 295
Tolpuddle Distribution	Liz Gould	01305 848464
Annual Advertising Rates to end June 2020 (Sizes are cm)		
Eighth Page - (6.00 x 4.40) - £48.00		Half Page - (12.26 x 9.00) - £130.00
Quarter Page - (6.00 x 9.00)(P) (12.26 x 4.20)(L) £71.00		Whole Page - (12.26 x 18.25) - £180.00

The Editor's decision is final. All items for publication must include name and contact number of the author. Opinions expressed are not necessarily those of the church or the magazine. Advertisers are neither vetted nor endorsed by the Parish Magazine.

Please mention the Puddletown Parish Magazine when responding to advertisers. For magazines by post contact the Distributors as shown above.

Published by the Parish Magazine, St Mary's Church, The Square, Puddletown, Dorchester DT2 8SL.

Produced by Weatherbury Media Services, 01305 848 427.

Printed by LA Digital Print 01202 980103

Copy deadline for the May 2020 magazine is Sunday 5th April 2020.

This month's cover photo: Easter flowers at St Mary's Puddletown—2019.

read woodruff
chartered accountants



**Practical accountancy and
taxation advice
free initial consultation**

**www.readwoodruff.com
online information and advice**

24 Cornwall Road DORCHESTER Dorset DT1 1RX
Telephone 01305 265544
e-mail advice@readwoodruff.com



Jane Askew
Carers Connected

Are you struggling with technology?

Do you need help with your iPad or printer?

Jane offers setup and support of all technology for older people.

Small group sessions or one2one in your own home.

Unlimited email/telephone support.

Windows 7/8/10, Apple iPads, Android tablets and much more.

Visit www.carersconnected.co.uk for more information and testimonials.

Or call Jane on 01305 260645 or 07989 322718

**West Dorset
Mobile Foot Clinic**



**Unable to reach or cut your own Nails?
Foot Pain when you walk?**

Then why not have Professional treatment within the comfort of your own home!

- Nail Cutting, including Diabetic Feet
- Corns & Calluses
- Cracked Heels
- Fungal Nails
- Hard Skin Removal
- Ingrowing Nails
- Thickened Nails
- Nail Reconstruction
- Medical Pedicures



Book your home appointment TODAY!

07903 722542 Roy Fox
SAC Dip FHT, SAC Dip FHP, MRHP

07712 525058 Christine Fox
SAC Dip FHT, SAC Dip FHP, MRHP

roy@westdorsetmobilefootclinic.com

www.westdorsetmobilefootclinic.com



THE VICAR'S LETTER

Easter Joy

Last month, I received a lovely surprise. I went to my favourite café in Dorchester to discover that the owner had left two bunches of tulips on my table as a random act of kindness. That gift brought me much joy, and I'm now planning my own ways of bringing some light into the lives of the people around me. It doesn't have to be expensive to do this – it's the thoughtfulness behind the gesture that says the most.

Easter is one way of God showing joy and brightness to the world. The resurrection shows the power of life over death and light over darkness. God's goodness will always be stronger than the negative forces in our world and beyond.

It is all too easy to get bogged down with the things that make our lives hard and focus on them; somehow at difficult times they seem to push out the more positive things, even to the point where we can forget that all lives have good things in them too – we just have to open our eyes to them.

Jesus faced the darkness of betrayal, abandonment and crucifixion. For his disciples at the time, it must have felt on Good Friday and the days beforehand as if all their hopes had died along with their friend and teacher.

But three days later, everything changed. God's gift of life could not be overcome by death, and the resurrection completely turned things around for those early followers. Hope was restored, a future emerged, joy abounded and lives changed.

But this was not just for the first disciples. More than two thousand years later, people still experience the power of the resurrection, the light in the darkness, the life that is stronger than death.

True love and true light only have meaning if there is the possibility for the opposite. Love is not love, if it is merely an automatic response over which we have no say. My gift of flowers meant something because it was a thoughtful act not a robotic gesture.

Many people question why God allows suffering and doesn't stop every famine, flood, murder and dark act. But they forget that one of the greatest gifts we have been given is the choice as to how we live our lives: choosing love or hate, light or darkness, greed or generosity. Human beings have a lot to answer for: one group of people starve while another throws food away; we concrete over the earth so that water has nowhere to go; people choose violence rather than peace.

In the midst of the evil of the world, the resurrection reminds us that ultimately what will remain is love and joy and peace. These things will never be overcome by the darkness. Happy Easter

Best wishes

Sarah

Taylor's Accountants

Chartered Accountants In Puddletown.

High quality accountancy delivered with a personal touch.

For all your accounts and tax requirements.

Contact us for competitive fixed price work, undertaken for a full range of services, including VAT, payroll and company accounts.

01305 848779

grant@taylorssaccountants.co.uk

www.taylorssaccountants.co.uk



WOODLAND • ECOLOGY • LANDSCAPE

**Knighton
Countryside
Management**

**Need a tree surgeon?
Give us a call on
01305 848881**

Our services include:

Stump removal and wood chipping
Tree surgery
Reductions and felling
Emergency tree work
Tree risk assessments
Hedge Laying and fencing
Stump removal and wood chipping
Log & woodchip delivered

Fully qualified and insured staff

All jobs undertaken both large and small

Friendly advice, free no obligation visits and quotes

Contact us now on: 01305 848881



**Dorset
Studio School**
LAND & ENVIRONMENT

office@knightoncountryside.com

www.knightoncountryside.com

Unit 37, Enterprise Park
Piddlehinton DT2 7UA



Piddle Valley Vets is a veterinary surgery where we look after every aspect of your pet's health and welfare. We match the highest quality and most up-to-date clinical techniques with a caring, compassionate and open environment.

The practice is located in the old GP Surgery in the picturesque village of Puddletown. There is plenty of on-site parking and the building has been extensively refurbished and then equipped with facilities to house animals of many different species in the most comfortable and relaxing way possible within a clean, clinical environment.

Telephone 01305 848820

www.piddlevalleyvets.co.uk

"Keeping Your Pets Well"

David Holah BVSc CertZooMed MRCVS



Tower News

**Dorset County Association, Milborne
St Andrew, Dorset**

Sunday, 23 February 2020 in 44m (8–3–18 in A)

1260 Plain Bob Doubles

- 1 Jane Pridmore
- 2 Nigel Pridmore
- 3 Robin J Mears
- 4 Robert Newton
- 5 R Nicholas Lawrence (C)
- 6 Emma Hughes

Rung in Memory of John Anthony (Tony) Coldwell 1932--2020.

Today would have been his 88th Birthday.

Church Bell Fund Jumble Sale

A huge thank you to everyone who donated towards the sale, made cake, and to my family and friends who rallied on the day to make the sale such a success.

As of writing this message, the total so far is almost £600. All bric a brac, after sorting, was donated to Julia House.

A huge thank you from me.

Hazel Barrett

Stitchinghouse Design

Curtains & Interior Design
Beautiful Fabrics
Blinds
Interior design showroom
workshop direct prices

Monday ~ Friday 9 – 4
Saturday 9-12

3 Pummery Square, Poundbury,

01305 250782
www.stitchinghouse.co.uk

JURASSIC PURBECK AERIALS.COM

**SKY FREESAT AERIALS WI-FI
TV MOUNTING
SAME DAY SERVICE
OAP DISCOUNT
07976 222 887
01929 553705**

PICTURE FRAMING

Over 20 years experience. Large range of frame mouldings and mount colours.

Five types of glass.

Needlepoint and Tapestries,
Stretching and Framing.

Mirrors made to order

Telephone 01305 265137 to arrange an appointment or home visit.

R.A. Clarke-Williams
THE CHEST OF DRAWERS
DORCHESTER

44 Manor Road, Dorchester, DT1 2AX



Clox On Time

69 Monmouth Road
Dorchester. DT1 2DE
01305 250442
www.cloxontime.co.uk

Clox On Time is a family run

business carrying out servicing, repairs and restoration to all types of clocks and time pieces. We sell a varied selection of clocks and watches. We are stockiest for Royal London, Lorus (made by Seiko) and Limit. We have a small selection of Timex & Cannibal watches. Batteries and straps fitted, usually while you wait. Feel free to ring Graham or Debbie for any advise or estimates. Please mention the magazine.

Lent 2020

During Lent there will be the following opportunities offered:

Mondays from 2nd March 12 noon Royal Oak, Milborne St Andrew

Come and discuss the Archbishop of Canterbury's Lent Book *Saying Yes to Life* (SPCK, £9.99) over a pint, coffee or lunch – you chose what you order.

Recommended by the Bishop of Salisbury for parishes to study during Lent this year, the book looks at environmental, social and ethical issues and their connection to our faith. How can we make a difference for good in our world?

Tuesdays from 3rd March 7.30 p.m. Puddletown Church Room

The Greatest Showman film was panned by the critics but loved by millions.

Rachel Mann has written a Lent Course (*From Now On* Darton, Longman & Todd, £6.99) to help us reflect on how we can face and overcome doubt, prejudice and temptation; live more authentic lives and celebrate God's world and each other. We'll watch the whole film the first week, and then use excerpts to aid our discussions after that.

Thursdays from 5th March 12.30 p.m. Dewlish – various locations

Lent lunches – delicious soup, bread and cheese in return for a donation to charity

Thursdays 6 p.m. Milborne St Andrew church

Compline: a quiet, reflective short service for the evening

Thursdays 6.30 p.m. Dewlish church

Evening prayer: a said service with a thought for reflection

Throughout Lent times and place to suit

Come and have a one-to-one chat with Sarah about your spiritual life: where it's at now and how you might go deeper in your relationship with God.

Contact Sarah (01305 848784; sarah.c.hillman@outlook.com) for more information about any of the above or to book a one-to-one appointment.

**Due to the current situation with Covid-19
all church services are suspended and
events postponed/cancelled.**

BENEFICE REGISTERS

Baptism

1st March	Roman Albert Roff	Puddletown
-----------	-------------------	------------

P.N.GRAY

ELECTRICAL LIMITED

AGRICULTURAL – DOMESTIC
INDUSTRIAL - COMMERCIAL INSTALLATIONS
ESTABLISHED OVER 60 YEARS
VAT NO: 185-883-509

ALL ELECTRICAL WORK UNDERTAKEN FROM
INSTALLATIONS TO MINOR WORKS
INSPECTION AND TESTING
REWIRING AND MAINTENANCE

GIVE US A CALL FOR A FREE NO OBLIGATION
QUOTATION OR JUST SOME FRIENDLY ADVICE



Tel: 01258-837354
Mobile: 07774-838851
Email: pngrayelectrical@btinternet.com



DOGTREKKER

DOG WALKING AND PET CARE SERVICES

A reliable dog walker and pet care service. Fully insured and police checked. Trained in Canine first aid, Small animal nutrition, and Canine behaviour. Individual or group walks available.

Tel: 01305 854365 Email: info@dogtrekker.co.uk Website: www.dogtrekker.co.uk

KMc Electrical Services

All types of electrical work undertaken for domestic, industrial and commercial properties

- Extra points to full rewiring
- Test & Inspection of building wiring
- Three phase
- Emergency callouts

No job too small

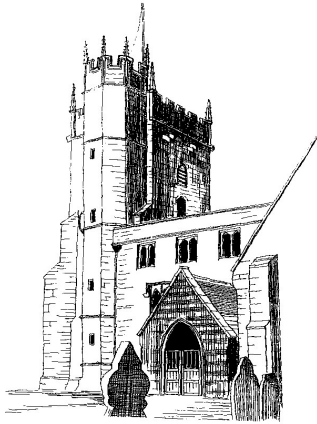
Professional, Quality service

Tel: 01258 881439 Mob: 07712 646131
Email: info@kmcelectrical.co.uk

ELECSA

REGISTERED MEMBER
ECA





St. Mary's Church

Events—April

We are now well into 2020 and our regular events continue each month. If there is anyone who would like to be involved in our friendly team providing teas/coffees and cake on a Thursday morning please do get in touch. It is not hard work, but is very sociable and we usually have fun. Phone Judy 01305 849146 if you would like to join us.

Messy Church This will take place in Dewlish on Sunday 5th April There will be activities, crafts, songs, games, a bible story

and prayers followed by tea. An adult must accompany children.

Pop-in Coffee Mornings These take place every Thursday from 10 am to 12 noon, everyone is welcome. Rosemary will bring her card stall on 9th April

Mid-day communion This will be at 12 noon in the Church room on Thursday 16th April

The Monthly Village Lunch for April has been cancelled due to the current Covid-19 isolation advice.

Easter Lilies At Easter the church is decorated with lilies. If you would like to make a donation in memory of loved ones please contact Heather Mears. There will be a list of names displayed by the altar arrangement.

Quangle Wangle Choir This has been booked for Saturday 24th October. Please make a note in your diaries.

Due to the current situation with Covid-19 all church services are suspended and events may be postponed/cancelled.



Do you need five minutes peace from the busyness of your day?

Our village churches in Puddletown, Dewlish, Milborne St. Andrew and Tolpuddle are open daily for solace and reflection.

‘Cast your cares on the Lord and He will sustain you’. Psalm 55.22

D&H Autos

New Street, Puddletown. DT2 8SF

Tel: 01305 848847



Service and repair - all makes and models
MOT's carried out by own staff in Poole
Free local delivery and collection

- ✓ Highly skilled, dealer trained technicians
- ✓ The very latest in diagnostic equipment
- ✓ The expertise you expect from a dealer

Menoc Motors

14 Ventura Place, Upton Industrial Est.



Upton, Poole. BH16 5SW

Tel: 01202 624200



Puddletown Society

February Talk



A full house enjoyed photos and a knowledgeable talk on the chairman's trip to one small part of Australia, The Great Ocean Road the worlds largest National War Memorial.

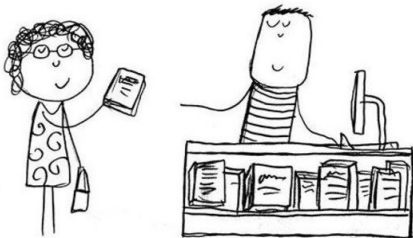
Starting in Torquay he told us of the history of the road being built by Ex Service Men returning from the 1st World War. We travelled along the road taking in the scenery on both sides of the road. It looked beautiful, waterfalls and woodland up towering cliffs to the plunging cliffs on the other ending into the foaming sea crashing against the rocky cliff remains of the Twelve Apostles.

We were also told about the collapse of London Bridge which was a joint rock bridge formation jutting out from the land until 1990 when the interior part of the bridge collapsed leaving 25 people stranded on the remaining part of the formation and had to be helicoptered off. A couple of Australian visitors to the talk were able to tell us how two young girls that they knew had been on the collapsed part of the bridge two weeks earlier jumping up and down singing London Bridge is Falling Down, was that a premonition!

The talk ended as usual with coffee.

Sally Ridout (sec)

Do you have unwanted books and DVDs?



Why not donate your adult and children's fiction books, talking books, DVDs and jigsaws to Puddletown Community Library for the Free Loan Section?

We can only accept paperback books, which are in good condition.

Crossways Travel

Executive Coach Travel With A Personal Touch

DAY EXCURSIONS AND HOLIDAY TOURS ON COACH picking up in PUDDLETOWN, TOLPUDDLE and DORCHESTER.

Come and experience coach travel with a difference.

DOWNTON CUCKOO FAIR	May 2 nd	Adults £24.95
DUNSTER CASTLE, GARDENS and VILLAGE	May 4 th	Adults £44.75 (Inc Entry)
TEIGNMOUTH SEA ADVENTURE	May 7 th	Adults £46.95 (Inc Entry)

INDUSTRIAL SECRETS OF SHROPSHIRE

June 4th 5 DAYS JUST £475

Join us for an amazing tour to Shropshire staying at the fabulous Copthorne Hotel right next to Dudley Canal. We will be visiting Blists Hill Victorian Town, Black Country Museum, Coalport China Museum, Himley Hall, Ironbridge and we will even treat you to a cruise on Dudley Canal. You will also have the chance to go on the Llainfair Light Railway. This really is a holiday you cannot afford to miss.



For your copy of our 2020 Day Excursion Brochure

CALL US ON 01305 851697

www.crosswaystravel.co.uk

Puddletown Area Parish Council

The PAPC represents the communities across the four parishes of Athelhampton, Burleston, Puddletown and Tolpuddle. We operate as a group of democratically elected representatives having the mandate to speak on behalf of the people in our communities. We work to do this with authority and integrity.

We know that people in our communities are keen to keep lines of communication open with us. Although we already have a website and a Facebook page, we realise that not everyone is online so prefer reading news via channels like this parish magazine. That is why, from now, we will be writing a piece for every edition of the newsletter. It will bring you current information and news which we hope you will find useful and of interest. Our first topic is regarding monies available for further enhancing village life and how you can have a part to play in how that is used.

The Community Infrastructure Levy (CIL)

What is the CIL?

It came into force in April 2010. It allows local authorities in England and Wales to raise funds from developers undertaking new building projects in their area. The money can be used to fund a wide range of initiatives that are needed as a result of development. This includes new or safer road schemes, flood defences, schools, hospitals and other health and social care facilities, park improvements, green spaces and leisure centres. Additional funds for community projects could be made available from Parish funds.

How much is available in the CIL?

It is currently estimated that the CIL income to the PAPC will be £68,000 up to the end of 2023. This will increase if additional new housing development occurs.

Is there a time limit on when the money needs to be utilised?

CIL monies must be spent within 5 years of the Parish Council receiving the funds.

How will the PAPC ensure the CIL monies are well invested for the good of the communities?

There have already been two residents' meetings (January and November 2019), These meetings resulted in consultation with residents and production of a list of priorities. CIL investment decisions will also take into account findings from the Puddletown Neighbourhood Plan.

What are the next steps?

We will be holding a third residents meeting in June this year. The aim of this is to communicate to everyone what the identified priorities are and what we have already implemented from these. Ensure we are aware of any newly emerging priorities for consideration and finally, to address the need to progress forward to implementation key initiatives/projects/workstreams by appropriate stakeholders.



Greeting Cards * Gift Wrap
Invitations

Quality stationery items for up to 50%
less than high street prices.

ROSEMARY BUCK

3 HIGH STREET PUDDLETOWN

DORSET DT2 8RT

Tel: 01305 848575

Email: rbuck88.rb@gmail.com

www.flamingopaperie.co.uk/web/rosemarybuck/



Blanchards Bailey
Solicitors



With you for
life's journey

www.blanchardsbailey.co.uk

Call us on: 01305 251 222

I.J.SPILLER & SONS

PAINTERS & DECORATORS

PROPERTY MAINTENANCE

EXTERIOR & INTERIOR

FREE ESTIMATES

Tel: PUDDLETOWN

Office:- 01305 848523

Mobile:- 07825 184683

E-mail : nspiller@btinternet.com

REFURBISHING DORSET PROPERTIES WITH A QUALITY SERVICE

projects/workstreams by appropriate stakeholders. We will send out further information nearer the time.

If you have any questions about this, you can contact the PAPC as follows: Via the Clerk, Anna Bendall: 01305 849596 or email puddletown@dorset-aptc.gov.uk. www.puddletownareaparishcouncil.co.uk Puddletown Area Parish Council Facebook page, @PuddletownAPC

PAPC meetings take place every second Tuesday of the month at Tolpuddle or Puddletown Village Hall at 7pm. The April meeting will be on 14th April at Tolpuddle VH.

BENNETT BULLETIN FROM TORONTO

I promised to let you know if the Canadian winter was as bad as predicted. Well, this is the last week of February and we still have piles of frozen snow on the sides of the road where the snow ploughs have cleared the way. The sun is shining, the sky is blue, but it is cold (below freezing). Everyone says we have had a relatively mild winter (snow, freeze, quick thaw, snow, freeze, quick thaw etc. since the middle of November). Compared with most of the rest of Canada we in Toronto have got off very lightly. In Newfoundland they had so much snow that a state of emergency was declared and the army were called in to clear it. So I think we must count our blessings and look forward to Easter and spring.

The news here has also followed the extreme weather events in the U.K. Severe storms and flooding seem to happen more and more. My contacts in Puddletown and around the country keep me up to date.

To take our minds off the winter weather there is a good deal of political turmoil all around. There are protests against the proposed oil pipeline in Alberta, with blockades on the rail network causing the cancellation of train services across the country and teachers in Ontario are in dispute with the Provincial government causing a succession of one day strikes.

On a brighter note the Canada geese have returned, heralding spring – despite the still freezing temperatures. Only two pairs so far but every year we see at least 12 geese gathered in the parking lot opposite my apartment. They crop the grass verge and sleep in the sunshine, taking up several parking spaces. Occasionally they decide to cross the road (very slowly) in the face of oncoming traffic but drivers seem to be much more patient with the geese than they are with each other.

At the end of April it will be six years since Roy and I and Cookie (who turned 15 on Valentines Day) left Puddletown and flew to Canada as new immigrants. It was a huge change to make, but it was worth it to be near the family. I am not sure I am completely fluent in Canadian yet (for example I have to remind myself that cars have hoods and trunks, not bonnets and boots) and I really cannot understand baseball or hockey. However, Canadians are very forgiving.

I wish you all a happy and blessed Easter.

Diana

A.M.T Building & Gardening Services

Andy Thorne

Stone Bungalow, Burleston

Tel: 01305 848188

Mob: 07970824511

e-mail: andrewt.thorne930@

googlemail.com

**Most Aspects of Building & Gardening
Maintenance undertaken.**

**Grasscutting and Hedgetrimming.
Brickwork and Blockwork.
Carpentry and Timber Structures.
Decking, Patios & Concrete Bases.
Painting and P. V. C. Fascias,
Soffits and Guttering.**

Free Written Estimates. No V.A.T.

SUGARING

**Removal of unwanted hair
with smooth, soft results.**

No more stubble.

**Suitable for all areas of the
body.**

Ladies only.

Bere Regis. Free parking

**Contact Jackie Legg for more
information on 01929 471068**



www.hustingselectrical.com
office@hustingselectrical.com
Office: (01258) 837385 Workshop: 839052
Mobile: 07973 574 215 or 07549 380 217
New Services / Traditional Values
Call or Email us with your requirements.

Hustings Electrical Ltd.

Electrical Contractor Since 1980 - New Technical Services Division

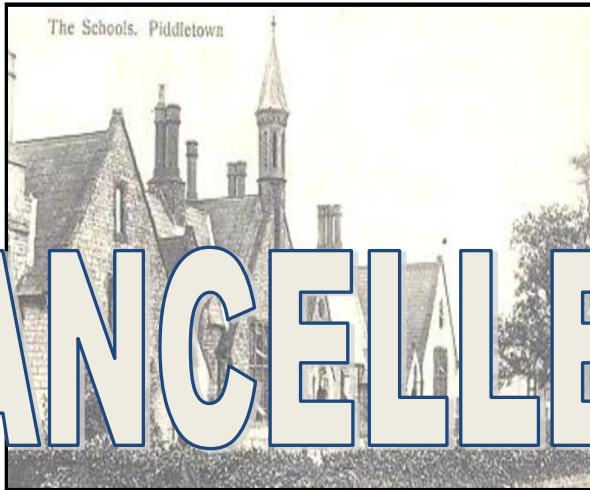
Agricultural - Commercial - Industrial - Bespoke Panel Building & Controls
Domestic - Equestrian - Fire & Intruder - SMS & Programmable Logic Automation
Alarms - Emergency Lighting - Test & - Computing Infrastructure Services
Inspection - Control Systems & Panels - Data Recovery - Firewall Security
CCTV - Data Cabling and Computing - Custom Builds & Repairs - Malware Rescue
Security & Access Control Systems - Website & WebApplications - IP-CCTV

Puddletown Countrywomen's Club

The Puddletown Countrywomen's Club meets on the **third Wednesday of every month at 2.30pm in St. Mary's Church Room**. Look out for our posters in the village.

All ladies (and gentlemen) from Puddletown and neighbouring villages are cordially invited to join us for our April meeting on:

Wednesday 15th April at 2.30pm
St. Mary's Church Room



Victorian Schools **by Chris Worpole**

On 8th January 1866, Puddletown National School moved into a new school building in the High Street, which was paid for by the squire John Brymer. The talk will be in two parts: the first will tell the story of the staff and pupils of the school in the 1870s; the second part will concentrate on a typical school day, with examples of lessons.

£2 for non-members

Tea and Cake Raffle Bring and Buy Table

JURASSIC — COMPUTERS —

*The incredibly friendly
computer people*



Call Darrell Hounscome or Lee Thompson for
jargon free, patient, friendly computer help for
home and business users.

Whatever your computer problem, call us... we can help!

01305 755668

Repairs • Servicing • New PCs & Laptops • Training • Virus Removal

Are you ready for a new PC or Laptop? If so, come and see us. We offer a complete service and will guide you through the whole process. We can supply, update, set-up and then transfer your documents/emails from your old system. We will give you the benefit of our combined 37 years experience gained whilst working for Kingston Maurward College in Dorchester.

Email: info@jurassic-computers.co.uk ~ Website: www.jurassic-computers.co.uk

PROSPECT HOUSE, DEVEREUX AVENUE, EAST BOUNDRIARY, DORCHESTER, DORSET DT1 3WF

GRASSBY FUNERAL SERVICE

*Still a family run business,
serving the local community since 1861*

8 PRINCES ST,
DORCHESTER

Tel. **01305 262338**

(24 Hour Service)

www.grassby-funeral.co.uk



Golden Charter
Funeral Plans



MEMORIAL MASONRY



Join us at the Café

Sunday 8th March

Sunday 19th April

Sunday 17th May

Due to Covid-19
future dates are
cancelled/
postponed

COMMUNITY



Tea and coffee
Local Sweets

in the Village Hall 10.00-2.00

www.facebook.com/PuddletownCommunityCafe

E-mail puddcommcafe@gmail.com

The Spring Grove Forge Ltd

WROUGHT IRONWORK



Specialising in:

*ornamental ironwork
plain ironwork,
fire escapes and
steel fabrications*

PUDDLETOWN 848328

COOMBE ROAD, PUDDLETOWN, NR. DORCHESTER

**Art Classes
Willoughby Cottage
Puddletown**



**Life Drawing, Portraiture
Watercolour
Call
07970675429**

Abbey Swimming Club

Based at Milton Abbey School in Milton Abbas we use a 25 metre indoor pool for 3 sessions each week.

All sessions are covered by a Lifeguard.

Membership is open to all. Members range from those less than a year old to over 80. We are a social and friendly club, so join us for community spirit, fitness and health.

Great value annual membership means you can swim for a little over £1.90 per week.

Adults: £100pa Family: £240pa*

*2 adults plus up to 4 children at the same address

Juniors (under 18): £55 or
£35 as part of a Family membership

Children under 3 as part of a Family: FREE

Club session times:

Tuesday 6.45pm – 8.30pm

Saturday 10.00am – 12 noon

Sunday 8.00am – 9.00am

Interested? Come along to the pool during any session time to pick up an application form or to take your FREE INTRODUCTORY SWIM or contact
Lynn 01258 881443 or Pat 01258 880601



COMPREHENSIVE AND FAST PICTURE FRAMING SERVICE

- Re-glazing, re-mounting and re-furbishing of existing frames.
- Specialist reflection-control and UV protective glass available.
- Stretchers made to order in all sizes.
- Professional restoration of both oil and works on paper.
- Trade prices for regular artist framing – *please enquire.*

The Old School House
Tintleton, Dorset DT2 8QR
T 01305 848 909 • M 07901 946 102

Dorchester Poverty Action needs a voluntary treasurer – could you be that person?

Dorchester Poverty Action (DPA) is a hard-working local charity making cash grants (max.£200) to people living in DT1 and DT2 areas who hit a financial crisis. It was set up 30 years ago by Churches Together in Dorchester and maintains its links with local churches. More information is on the website www.dorchesterpovertyaction.org.uk and on Facebook.

DPA has a team of 5 trustees who are all volunteers, including the treasurer. The treasurer post is supported by 2 volunteer financial assistants, forming a finance team. The trustees meet quarterly, followed by a meeting of the larger advisory group. Much of the work of the treasurer can be achieved by e-mail and a full job description is available by contacting info@dorchesterpovertyaction.org.uk

The closing date for applications is April 20th 2020

Digital Champion's bright idea helps Barbara switch and save

A lady from Dorchester has benefitted from free digital sessions on how to change suppliers online and has managed to save over £450 a year on energy bills with the first switch.

Barbara Scanlon went online at Dorchester library under the guidance of her local volunteer Digital Champion Mike Watson. She visited a price comparison website and worked out that with just a few digital moves she would be over £40 a month better off.

Mike has been helping her master a range of digital skills to do household bills and chores online such as paying Council Tax, setting up insurance, joining a loyalty discount scheme, using email, printing and using price comparison sites.

Mike said: "All Digital Champions are able to help you master the skills to do these essential households tasks online and a whole lot more. Don't waste time and money, just book a slot to see your local Digital Champion and we will help you every step of the way. It won't cost you a penny."

Digital Champions work in communities, usually in libraries, one-to-one with people to help improve their digital skills. They are volunteers who enjoy using computers and have the patience and enthusiasm to show others how to benefit from being online, in this case how to save money.

To get help from your own Digital Champion and find out how much you could save, please call us and we will put you in touch with your nearest Digital Champion. Call now 01305 221048.





KNIGHTON

Plumbing & Heating



Daniel Dorton

6 Glebe Way, West Knighton

Tel: 01305 853893

Mob: 07837 654921

**All aspects of plumbing work from a dripping tap
to a full central heating installation**

Fully qualified, fully insured, all work guaranteed, references available
High quality work at competitive rates, local plumbing competition winner
24 hour call out with no call out fee, free quotes
10% discount on labour for OAP's



"Right first time"
"Installing quality into your home"



CHRIS RAWLINGS

Building and General Maintenance

FREE QUOTATION

FULLY INSURED

**Extensions
Re-Pointing
Plastering
Painting**

Brick and Block Work

**Fascia, Soffits and Guttering
All Garden Works**

**Patios
Driveways
Fencing**

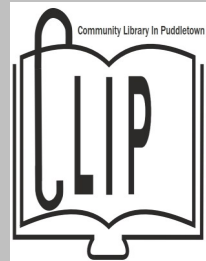
Call Chris on 07833467176 Or 01305 251974
chris.rawlings01@yahoo.co.uk
www.chrisrawlingsbuildingandmaintenance.co.uk

The Friends of Puddletown Library (FOPL)

200 Club, February 2020 Draw win-

1st £40	19	C. Luche
2nd £20	173	Sarah Hillman
3rd £10	93	Heather Mears

**Please note the library will now
close at 5pm on Monday,
Wednesday and Friday.**



ners

Puddletown Weather

*Site location (GPS): N 50° 44.937' W 2° 20.862' altitude 88.39 metres
(somewhat sheltered from easterly winds)*

February 2020		
	Rainfall for the month	173.10 mm
	Cumulative for the year	273.90 mm
	2019 Rainfall for the month	75.90 mm
	2019 Cumulative for the year	128.40 mm
	Temperatures	Max. 13.90 °C Min. 0.60 °C
	2019	Max. 23.10 °C Min -5.70 °C
	Maximum wind speed	26.60 mph
	2019	19.00 mph



Prices from just
£15*
per treatment

Choose **GreenThumb** to bring your lawn to life...

We offer seasonal weed and feed treatments from just £15* that will keep your lawn looking lush, green and weed-free throughout the year.

We also provide beneficial treatments to keep your lawn in tip-top condition:

- ✓ Hollow-tine aeration
- ✓ Scarification
- ✓ Lawn disease management

For your FREE lawn analysis, call today: 0800 0111 222

E: dorchester@greenthumb.co.uk

GreenThumb
LAWN TREATMENT SERVICE



LOGS

Quality Seasoned Hardwood Logs

Small Load £80 and Large Load £175

Kindling and Coal Household/Smokeless

20kg Household £10.50

20kg Smokeless £13.00

Tel/Fax: 01258 837377

Mobile: 07971 276980



b.Beauty

Mobile Beauty Therapist

tel: 07826082343

email: b.Beauty@mail.com

facebook/instagram: [b.beauty.bekah](#)

Offering a range of Beauty services from the comfort of your own home!



Felling
Reductions
Pruning
Stump grinding
Hedges
Lawn maintenance
Turfing
Strimming
Garden fencing

Greenways Tree Care & Garden Services

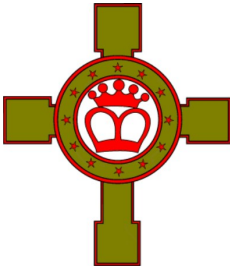
(Fully Insured)



Tim Moore - 01258 837124
- 07968 154708

Free estimates and Advice
20 years experience

Dewlish, Dorchester
Chippings and Compost delivered



St Mary's Middle School

We were incredibly lucky in February to have a visit from a real-life author. Chris Connaughton came into school and wowed us with his storytelling skills. Year 5 were thrilled by his retelling of a ghostly tale and excerpts from his new book: *The Essence Hunters*. Year 6 were treated to several different extracts from the book that showed us just how our writing skills can

enthrall an audience. Then some of our children got to work with Chris in a workshop based on what to do if you're stuck in your writing! A brilliant learning experience and many of the children took the opportunity to buy a signed copy of Chris's book. St Mary's KS2 children and staff would like to thank DASP for funding the visit.



Listening to author Chris Connaughton



Reflecting on our planet

Year 6 and 7 pupils had an opportunity for reflection thanks to a day of activities organised by our Worship Group and Sarah, our vicar. This year, pupils were asked to reflect upon their connection with our planet. Taking time has many benefits. Pupils responded positively, some reporting that they felt relaxed, calm and thankful for the chance to think about their own actions. Others felt sad, regretful or angry about the way we are damaging our planet. Some felt

grateful for our world while others said they were enlightened and motivated to make changes.

St Mary's netball squads have made a fantastic start to the 2020 Netball season! Last week, the newly formed Year 7 Netball squad went down to Budmouth Technology College for the South and West Dorset Area Netball Tournament. They played extremely well finishing 3rd out of a total of 8 teams, which meant they qualified for the Dorset Schools County Championships, which is a fantastic achievement!

Finally, Year 5 celebrated Shrove Tuesday by making and eating some delicious pancakes served with lemon and sugar or golden syrup!

Hope you have a lovely Easter!

Darren Ayling—Head Teacher



Enjoying pancake day!

ALEX FROST & JOHN BUTLER



MASTER THATCHERS

PROMPT ATTENTION
HELPFUL ADVICE

5 Streetway Lane
Cheselbourne, DT2 7NU
01258 837538

www.jbmasterthatcher.co.uk

DOMESTIC REPAIRS

WASHING
MACHINES
FRIDGES
DISHWASHERS

NO CALLOUT CHARGE
PROMPT
COMPETITIVE
SERVICE
7 DAYS A
WEEK
24 HOURS A DAY

TUMBLE
DRYERS
COOKERS
FREEZERS

Tel IAN COOMBS on
07572 918745

J.P.L Gardens

Professional Garden Services

- Lawn Mowing
- Hedge Cutting
- Garden Maintenance
- Garden Clearance
- Mole Catching
- Landscaping and fencing
- Small tree work

Call Jerry Legg

01258 489977

07940 895803

23 May Grove, Charlton Marshall,
jplegg48@googlemail.com

JASPERS HAIR SALON

Main Street
Piddletrenthide
01300 348 569



Opening Times:

Tuesday:	9am-4pm
Wednesday:	9am-6pm
Thursday:	9am-5pm
Friday:	9am-7pm
Saturdays:	8.30-1.30

A modern Salon providing a
friendly and professional service

www.jasperssalon.moonfruit.com

CONTACTS PAGE - Please help us keep these pages up to date by notifying us of any changes

CLERGY	The Revd Sarah Hillman (Vicar)	01305 848 784
	Sarah.c.hillman@outlook.com	
RETIRED CLERGY	Rosie Coldwell	01258 839 214
	The Revd Sue Turner	07775 710 429
CHURCHWARDENS	Vacancy (Puddletown)	
	Vacancy (Puddletown)	
	Hilly Cobban (Tolpuddle)	01305 848 552
	Julie Bonner (Tolpuddle)	01305 848 027
	Pam Shults (Milborne St Andrew)	01258 837 203
	Vacancy	
	Sue Britton (Dewlish)	01258 837 218
	Jim Burg (Dewlish)	01258 837 466
BENEFICE OFFICE	Emma Hughes	01305 849 039
(www.puddletownbenefice.org)	puddletownbenefice@outlook.com	
PUDDLETOWN CONTACTS		
Alcoholics Anonymous	Alcoholics Anonymous	
Area Parish Council	Peter Churchill	01305 849292
	Email:peter.churchill.gooner@gmail.com	07407 235798
Area Parish Clerk	Mrs A Bendall	01305 849 596
	puddletown@dorset-aptc.gov.uk	
Bell Ringers	Robin Mears	01305 848 021
Carer's Association		
Children's Society	Dawn Loveless	01305 849534
Church Room	David Jeffreys	01305 848 211
COMMUNITY LIBRARY - Run & financed by volunteers. 01305 848 506		
Opening Hours:-	Monday: 3.00pm to 5.00pm	
	Wednesday: 3.00pm to 5.00pm	
	Friday: 3.00pm to 5.00pm	
	Saturday: 10.00am to 12.00noon	
County Councillor	Emma Parker	
Cricket Club	David Stevens	07720 411 952
Cubs, Scouts & Beavers	Alf Justin	01258 839 080
Football Club	Steve Brown	07789 821 408
Flower Rota	Heather Mears	01305 848 021
Footpaths & Rights of Way	Phil Drake	01305 848560
Friends of Puddletown Church	Ursula Pomeroy	01305 264 516
Friends of Puddletown Library	Mary Berry	01305 848 557
	Steven Buck	01305 848 575

CONTACTS PAGE - Please help us keep these pages up to date by notifying us of any changes		
DOCTORS		
Puddletown Surgery Dr J Griffiths, Dr C Burnham & Dr J Bond		01305 848 333
Puddletown Surgery (Dispensary)		01305 849 329
Out of hours medical advice & NHS Direct	Out of hours medical advice & NHS Direct	111
Gift Aid Co-ordinator	Bob Todd	01305 849 048
Guides, Brownies & Rainbows	Amy Knight	01305 848 602
Handbells	Bob Todd	01305 849 048
Mini-Soccer/Youth Football	Jon Palmer	07891 173 999
Neighbourhood Plan	Paul Langdon	01305 848 307
Organist	Jenny Hansford	01305 849368
PCC Secretary	Emma Hughes	01305 849039
PCC Treasurer	Bob Todd	01305 849 048
Puddletown Countrywoman's Club	Sylvia Hanby	01305 849 562
Puddletown CPPP	www.facebook.com/puddletownplaypark	
Puddletown Pumpkins Toddler Group	Kelly	07786 916515.
Puddletown Society	John Ridout	01305 848 940
Recreational Multi Games Area	David Knight	07890 260 320
Recreation Ground Pavilion	Liz Knight	01305 848 380
Royal British Legion (RBL)	S Ridout	01305 848 940
Rugby Club	Ray Stephens puddletownrfc@hotmail.com	07966 412 467
SCHOOLS		
Pre-school	Sharon Brown www.puddletownpreschool.co.uk	01305 849 533
Pre –school	Laura Evans	
First School (Head Teacher)	Mr D Hunwick www.puddletownfirst.dorset.sch.uk	01305 848 206
St Mary's CE Middle School	Darren Ayling—Head Teacher	01305 848 293
Short Mat Bowls		
Sunday Church Creche	Vacancy	
Sunday Seekers	Lynda Skinner	01305 849 485
Village Hall Caretaker/Bookings	Kevin Smith (puddletownvh@gmail.com)	07706 798271
Village Hall Committee Secretary	Nancy Vincent	01305 848 218
Yoga	Mandy Cooper	07713 477737

CONTACTS PAGE - Please help us keep these pages up to date by notifying us of any changes

Young Farmers (Dorset)	01305 263 947
------------------------	---------------

TOLPUDDLE CONTACTS

Craft Club	Teresa Turner	01305 849 060
Orchard Meadow	Anna Bendall—Clerk to PACC	01305 849596
PCC Secretary	Jayne Brayshaw	01305 849 314
PCC Treasurer	John Taylor	01305 848 552
Streetfair	Annette Pitman	01305 848 219
Tolpuddle Home Group	Simon Dodd	01305 848 171
Tolpuddle Old Chapel Trust	tolpud-dleoctrust@btinternet.com	tolpud-dleoctrust@btinternet.com
Tolpuddle Toddler Group	Maria Palmer	07717 506020
Tolpuddle Village Meeting	Julia Johnstone, Clerk.	tolpuddlemeeting@yahoo.com
Tolpuddle Village Show	Jo Austwick	austwickjoanne@gmail.com.
Village Hall Bookings Sec.	Diana Foreman	01305 848 419
Village Hall Chairman	Peter Walton - pdwalton@btinternet.com	01305 848 034
Whist Drive	Diana Foreman	01305 848 419
Yoga (Iyengar)	Sue Chapman	01305 848 053

USEFUL & EMERGENCY NUMBERS

Benefit Enquiry Line		0800 88 22 00
Dorset Community Action	info@dorsetcommunityaction.org.uk	
Dorset County Hospital		01305 251 150
Electricity Failure (Southern Electric)		08457 708 090
Gas Leak or a smell of gas		0800 111 999
POLICE—Local Officers	PC Moore 0229 & PCSO Alison Donnison 6500	101 or "Contact Us" section on Dorset Police Website

DEWLISH CONTACTS

Cricket	Elaine Kellaway	01258 837 696
Ladies Group	Judith Bridgen	01258 837 157
Parish Council	Andrew Booth (Chair)	01258 837 284
Village Hall (Chair)	Bernie Cosgrove,	01258 837 152
Village Hall (Sec)	Alex Carter	01258 837 312



BINDON ABBEY SCAFFOLDING

WOOL - WAREHAM

Reliable service and competitive pricing

T: 07501 465192

Email: bindonabbeyscaffolding@outlook.com



ockalty

Professional Animal Services

Qualified veterinary nurse with
qualifications in agriculture

Offers you a bespoke pet
service tailored to meet all your
individual needs

Dog walking	Daily cat visits
Dog day care	Equine
Boarding	Small holdings
Home visits	

Other services offered

Contact Gill 07791 567944

Email info@ockalty.co.uk

Website www.ockalty.co.uk

Ernest G Hart Ltd

marquee and event hire specialists

Supplying fine marquees since 1944



*For expert advice and friendly service
please ring us on*

01258 881047

www.ernestghart.co.uk

Unit 1, Milborne Business Centre, Blandford Hill
Milborne St Andrew, DT11 0HZ

CONTACTS PAGE - Please help us keep these pages up to date by notifying us of any changes		
MILBORNE ST ANDREW CONTACTS		
Allotment Society	Joy Robinson	01258 837 661
Archery	Sheila Ryall	01258 837 504
Athletics (Information)	David Pearson	01258 837 057
Badminton	Bruce Dyer	01258 839 117
Bellringers	Pip Bowell	01258 837 329
Busy Bees Group (Under 5s)	Claire Tudge	07970 734 162
Cribbage	Peter Anthony	01258 837 089
Food & Wine Club	Rose Frost	01258 837 921
Football (Youths)	Andy Brown	07427 503 373
Gardening Club	Sally Dyer	01258 837 061
Ladybirds Playgroup	Liz Dyer	01258 839 117
Milborne First School	Sharon Hunt (Head Teacher)	01258 837 362
Milborne Players	Roy Sach	01258 837 033
Nightsabre Dog Training Group	Natasja Lewis	07896 275 357
Neighbourcar	Nigel Hodder	01258 470 333
Parish Council	Richard MacNair	01258 837 912
	Wayne Lewin (Clerk)	07419 136 735
Patient Voice Secretary	Nigel Hodder	01258 880 229
Pilates	Claire Barratt	07703 648869
Round Robin Ramblers	Ian Bromilow	01258 880 044
Scout Group	Sam Elliott	07873 762 035
Sports Club	Richard Lock (& Bookings)	01258 837 929
Swimming Club	Pat Cowan	01258 880 601
Tai Chi	Brian Burton	01258 839 033
Tap Dancing (Adults)	Kevin Selby	01305 250 386
Tennis - Member's Secretary	Richard Hawker	07383 309 037
Village Hall	Pam Shults (Chair)	01258 837 203
	Alison Riddle (Bookings)	01258 837 148
Wednesday Social Club	Sheila Burton	01258 839 033
Women's Institute	Lesley Clarke	01929 471 732
Yoga –at First School (Iyengar)	Sue Chapman	01305 848 053
Yoga—at Village Hall	Sarah Ryan	01258 839 230
Youth Club (8-13 years)	Joanne Miller	01258 881 496



A family friendly traditional village pub in Milborne St. Andrew

What's on in April



Sunday 12th
Easter Sunday

All children on booked tables receive an egg



Thursday 9th
Tex Mex Night

£10.95 per head



Thursday 30th
Pie Night

£10.95 per head

CARVERY EVERY FRIDAY & SUNDAY

12 noon
to 2.30pm
£8.95 (Friday only)

From 6.00pm
£10.95

Smaller appetite
£8.95

Children
£5.95

All day Sunday
£10.95

Booking recommended

Dorchester Hill, Milborne St. Andrew, Dorset DT11 0JG

Visit www.theroyaloakmilborne.co.uk

or for enquiries email hello@theroyaloakmilborne.co.uk

TO BOOK CALL
01258 837248



St John's Church, Tolpuddle, April 2020

Yes- the churchwardens are well on the road to recovery- having organized the service for Sarah while both trundling around in wheelchairs! It definitely made me very aware of the problems associated with having restricted ability- not being able to do the simplest of tasks, having to

ask our long suffering husbands to pass this or that and how long it takes to get dressed! So my thoughts go out to all those carers who do this on a permanent basis.

Our congregation has been sadly depleted over the last month- mainly due to the ghastly weather- but at least we have escaped the dreadful flooding which has devastated great areas of the country. At the time of writing this we have also managed to keep the coronavirus away but are all aware of extra precautions which have been recommended by the Church of England.

What is happening in our church at the moment? We have had an expert clear the doves from the tower and erect netting to prevent further nesting there. We have our quinquennial survey booked for the end of May 28th. The church is warm and well lit. However there were a few leaks during the recent storms but we are aware that we will have to put up with those as we couldn't raise the funds to replace the roof. We hope to decorate the north aisle in the spring and also refurbish the vestry which has suffered to a certain extent at the hands of the electricians and doves!

So we are still fundraising...

Midsummer Party- June 20th- put the date in your diary as we will need lots of help

Also note regular services- every week in OUR church at 9.30 am- for more details look at the church notice board or Benefice or Village website.

Easter Arrangements—SERVICES SUSPENDED DUE TO COVID-19

Good Friday- 10.am service of reflection

Easter Sunday- 9.30 am Easter Communion- in Parish Church

Easter Monday- 10-12- Art at St John's Church with refreshments- bring your own materials and enjoy yourself.

Easter Lilies

If you want to remember someone who has been very special in your life why not ask Marion (07747 104591) to buy one and put it in our special Easter arrangement with the name in our List of Remembrance

Do remember that we have a well stocked book swap in the church(which is open every day) and a children's area where anyone can come and sit for a bit of a chill out and browse through the books.

Hilly and Julie—Churchwardens

WOODS FUNERAL SERVICES

Providing a caring service since 1878

Independent Funeral Directors

Memorial Specialist

24 Hour Personal Service

Prepaid Funeral Plans

Pauline J Guy Dip FD MBIFD

Allan Quartermaine Dip FD LMBIFD



Visit us at: 11A Icen Way, Dorchester, Dorset, DT1 1EW

Call us on: 01305 250425 Fax: 01305 250625

Email: enquiries@woodsfuneralservices.co.uk

Website: www.woodsfuneralservices.co.uk



GARY SPRATT

GARDENS AND WOODLANDS RESTORATION AND MAINTENANCE

EXPERIENCED. QUALIFIED. INSURED.

FRIENDLY RELIABLE SERVICE BY COMPETENT PLANTSMAN.

Careful and correct pruning of all trees, shrubs, roses and climbers.

Skilled training and tying of wall shrubs, roses and wisterias.

Professional tending of herbaceous borders.

Hedgelaying, pleaching, hedge cutting and renovation.

Coppicing and woodland management.

Wildlife habitat conservation.

Phone: 01258 837927. Mobile 07929 832244



live happy!
with
Slimming World
Now at
Puddletown First School, DT2 8FZ
On Monday evenings at 7.30pm
Call Julie 07871 821928 for more details

for the delicious worry-free meal visit slimmingworld.co.uk or 0344 897 8000

Slimming World
transforming hearts, changing lives

Struggling with Anxiety or Depression

Relationships

Grief and loneliness?

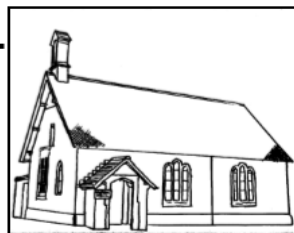
Phone 0774 702 4880

**for professional, affordable face to face individual
or couple counselling locally**



TOLPUDDLE VILLAGE HALL NEWS

Registered Charity No. 257403



Winners: 100 Club 2019-2020

In aid of the Tolpuddle Village Hall Development Fund

Monthly draws take place between 11.00 and 12.00 during coffee club, in the pub on the last Tuesday of the month.

2020	1st (£15)	2nd (£10)	3rd (£5)
February	Melanie Buchanan	Dorri Horlock	Ian Cray



Coffee & Company



St John's Church, Tolpuddle every fourth Saturday

From 10am – 12noon

Why not join a friendly group of ladies for coffee/tea and homemade cake?

We chat, relax and enjoy each other's company

A small contribution of £1 is asked to cover the cost of the venue

For more information please contact Jo on 07852 284357 or email
Austwickjoanne@gmail.com



Stockley Builders Ltd

**General Build &
Maintenance**

Tel: 01305 854500

**office@stockleybuilders.co.uk
www.stockleybuilders.co.uk**

JK TILING & DECORATING

Ceramic & natural stone walls & floors

Painting Interior & exterior

Wall paper hanging & coving

Public & commercial work undertaken

Fully Insured

Call Jason for a free estimate or advice

Mob 07796 142713 or Tel 01305 781064

Philip Trim Contractors

ULTIMATE LIQUID & SLURRY SOLUTIONS

**Liquid Waste Disposal
Emptying of septic tanks,
cesspools, gullies, interceptors,
grease traps, event & festival hire**

Local professional service

www.philiptrimcontractors.com

info@philiptrimcontractors.com

**Chamberlaynes Farm Workshop
Bere Regis Wareham BH20 7LS**



**RING NOW FOR DETAILS
01929 472192
07971 005579**

ORCHARD MEADOW

Tidying up for Spring!



We were lucky to get dry weather for our work party in March, re-arranged from February when Storm Ciara had other ideas! We coppiced the dogwood, pruned the apple trees and generally tidied up so that the park was ready for spring. We also took the opportunity to thank Martin Cooke and his family for their efforts in looking after Orchard Meadow, as after 12 years as Parish Councillor with responsibility for the park, Martin has stepped down. He joined the Council when Orchard Meadow was nothing

more than a rough field and over the years led fundraising efforts (raising over £150,000!), managed the landscaping and installation of play equipment and assisted in running the volunteer work parties. He was presented with a plaque by Rob Brunt and the other volunteers which was placed by the 'Charles Ross' apple tree that has been donated by Martin and his family.

The next work party will be in June, to make sure Orchard Meadow is in excellent condition in time for the Midsummer Party in June.

All enquiries about Orchard Meadow should be made to the Parish Clerk, Anna Bendall on 01305 849596.



Martyr Merchants

Specialists in;
Timber - Fixings - Hardware

Small Local Independent Builders Merchants

Suppling a wide range of building materials.
Call us now to discuss any projects large or small.
We are a friendly, helpful and experienced team,
that tailor our quotes to each customers design
and specification.

Call Now for a Price
inc, Free Delivery*

Phone: 01305 848540

sales@martyrmerchants.co.uk



Martyr
Group

Martyr Joinery

Bespoke Joinery & Construction

t 07792 640534

www.martyrjoinery.co.uk

- Handmade Kitchens
- Windows & Doors
- Conservatories
- Fitted Units & Furniture
- Oak Framing
- Timber Buildings
- Refurbs & Extensions
- Stable Blocks/Barns
- Gates & Fencing
- Vehicle Fit-Outs
- Custom Projects

All Aspects of Woodwork



Martyr
Group

PUBLIC PATHS

Rights and Responsibilities

PUBLIC FOOTPATHS, Bridleways and Byways Open to all Traffic (BOATS) are all HIGHWAYS giving the public the right to use them 'without let or hindrance to pass and repass'.

Footpaths are for pedestrians (no bikes), Bridleways allow horse riders and pedal cyclists, BOATS also permit motor vehicles, and another category, Restricted Byways do not permit the use of mechanically propelled vehicles. The enforcement agency is the Local Authority – Dorset Council.

With these rights come responsibilities. Most of the countryside is someone's workplace which must be respected. Apart from anything else it can be dangerous out there. There is a CODE of CONDUCT that members of the PUBLIC are requested to abide by: -

ENSURE YOU ARE ON A PUBLIC RIGHT OF WAY

BE SAFE – PLAN AHEAD, FOLLOW THE SIGNS & KEEP TO THE PATH

LEAVE GATES AND PROPERTY AS YOU FIND THEM

RESPECT PLANTS & ANIMALS AND TAKE LITTER HOME

*** KEEP DOGS UNDER CLOSE CONTROL AT ALL TIMES**

There is also a CODE for FARMERS/LAND MANAGERS

KNOW YOUR RIGHTS, RESPONSIBILITIES AND LIABILITIES

MAKE IT EASY FOR PATH USERS TO ACT RESPONSIBLY

IDENTIFY POSSIBLE THREATS TO USERS SAFETY

There is LEGISLATION that has to be complied with that includes: -
INTIMIDATION; OBSTRUCTIONS; CLEARING THE PATH THROUGH CROPS; MAINTAINING STILES & GATES

As far as maintenance is concerned, the surface of the path is the responsibility of the Local Authority (Dorset Council). However, vegetation encroaching onto or over the path is that of the land occupier as is damage to the surface by tractors. The Local Authority will give assistance with gates & stiles.

* There are often issues with DOGS on Public Paths. Near Communities this is often DOG FOULING in that first twenty or so metres. Elsewhere it can be dogs running free with the potential of disturbing wildlife and/or farm animals. Dogs do not have to be on leads, but they should be if the owners cannot keep them UNDER CLOSE CONTROL, that is, on the path.

Is it any wonder, then, that from time to time a deal of heat is generated? It is recognised that over the years some paths are no longer in the best interests of the Land Manager and/or the general public.

Continued on Page 43



Your home is where you feel the most comfortable and the happiest.

It's the place you know the best. Why would you move away from the place you love if you are faced with needing some extra care and support when you age? If you want to stay living comfortably at home, we can help you make that choice an informed one.

Our **care**

- ✓ Home help
- ✓ Personal care
- ✓ Companionship
- ✓ Dementia care

Home Instead Dorchester 31 High West Street, Dorchester, Dorset DT1 1UP

Tel: 01305 239289 homeinstead.co.uk/dorchester

Each Home Instead Senior Care® franchise office is independently owned and operated. Copyright © Home Instead 2019.

As it is very difficult to legally re-route a right of way, tolerance and good will is required from both parties to make it work.

Phil Drake

(Puddletown Parish Rights of Way Liaison)

philrexdrake@gmail.com



Milborne St Andrew's Church News

'Why are you supposed to give things up in Lent?' someone asked me recently. Lent is the forty days after Ash Wednesday, when Christians remember the forty days Jesus spent in the desert being tempted by the devil. This period leads up to the most important days in the Christian calendar – when Christ was crucified and rose from the dead – Easter.

Jesus spent this time in the desert without food and initially Christians fasted in Lent. These days we prepare for this holy time with prayer and giving up something that is important to us, chocolate, gossiping, the internet, or our precious time.

At St Andrew's Church in Milborne we celebrate an extra service in the church for Lent, every Thursday at 6 o'clock, Compline. This simple prayerful service dates back many hundreds of years and is led each week by a member of the congregation.

Sarah Hillman, our vicar, is running two lent courses, one recommended by the Archbishop of Canterbury is using the book, 'Saying Yes to Life'; we are studying the story of creation and how we need to care for our beautiful world. She is also running a course in Puddletown using the book, 'From Now On' where we contemplate doubt, prejudice and temptation.

Lent is a thoughtful time of prayer and realisation of how very blessed we are with this amazing world we inhabit.

So, whatever we give up for Lent, we try to come to Easter more focussed on our place in the community and where our voices and hands are needed.

Josie Wright

Due to the current situation with Covid-19 all church services are suspended and events postponed/cancelled.



Forum Ear Care
Mobile ear irrigation
£25 – fully qualified,
experienced and insured
nurse.
07562199815

Wills, Probate, Powers of Attorney
Appointments in your own home

Single Will £125

Single LPA £150

Email: enquiries@winterbornelegal.co.uk

Mobile: 07860 772274

Advice, guidance and assistance
from a local solicitor

Free initial telephone consultation
Evening and weekend appointments
available

Making life easier for you
Winterborne Legal Services Limited

A Month on the Farm

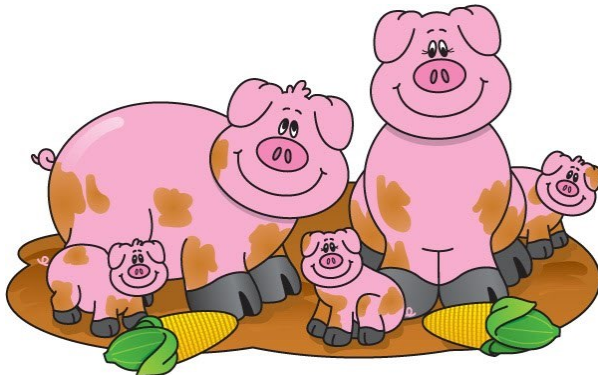
At both ends of the day it is now lighter and there is a wonderful feeling of spring coming fast which is heightened by at last a few days of actual sunshine and dryness. Lambing of the first flock has now been completed and ewes and lambs are out in the fields, the ewes are still been given some food in nut form and shortly the lambs will be creep fed on our own ration.

The cattle have all nearly made their way through the winter fields of turnips, while those still inside are fed on silage, hay, straw and a home made ration made from home grown barley, rape meal (what's left after the oil has been crushed out), limestone flour and minerals. Due to the very wet winter we have used a vast amount of straw for bedding those cows inside barns, which will mean lots of days of hauling it out to be heaped in a corner of a field ready for spreading in the autumn.

We have finished drilling the winter wheat, which has been slow to germinate in the very water logged soils. As soon as the ground conditions are suitable we will be applying the first dose of liquid feed which is a mixture of nitrogen and sulphur to the crops so getting them to tiller out and grow strongly.

Other cattle should be out on the dryer parts of the farm by the middle of April, though the meadows in places would most likely still be too wet by then. The five pigs have enjoyed the wet weather, stirring up the ground and making their small fenced area look like a ploughed field, but muck and the pigs snouts will make a wonderful fertile patch in a 28 acre field.

Wakely Cox



CAN YOU SPARE 4 HOURS A MONTH?



Puddletown Community Library is staffed by volunteers who provide an essential service for the residents of Puddletown and surrounding villages. As well as opening for the public for eight hours each week, there are regular visits by pre-school children and Puddletown First School.

For further information please call into the library and speak to one of our volunteers.



Milborne Ladybirds Playgroup

Different Jobs starting with builders

This half term we are looking at different jobs that adults do. When talking to the children it became obvious that very few of the children had any idea what their parents do except "go to work". So starting with builders the children have loved constructing our Wendy house and then fixing the roof or painting the inside. The role play has included our play tools tools, safety goggles and aprons (Ex B&Q craft club). Then I remembered a house making activity from years ago when a nice man called John helped the children make their own little houses from wood. Who can recognise the children in the old photo?

We didn't identify a nice person to help us with wooden houses this time but we did make little houses out of card – with opening doors, as requested.



By the time you read this we will have had a visit from a fire fighter, an ambulance man and possibly a policeman and a musician. If any one else can spare half an hour or so and does a different job and is happy to come in to preschool please let one of us know – this all helps the little ones understand the world around them.

Other things we've covered this month apart from playing in the rain! is St David's day – painting and making daffodils and cooking

welsh cakes. Dressing up for World Book day and reading lots of stories. And most exciting of all was playing with a broken table! Our purple folding table's leg snapped and after the children tried to mend it we turned it over making a great slope for cars to go down.

Liz Dyer (Leader)

01258 839117 or 07771 512427

Kelly Haggett (Secretary)

secretary@milborneladybirds.com

www.milborneladybirds.org.uk



Hilfield
FRIARY
Society of St Francis registered charity number 236464

**You are invited to a free one day course on
Thursday 11th June 2020
from 10am until 4pm
here at Hilfield Friary, DT2 7BE**



Addiction and Spirituality

This free course is for those who support or have contact with people who have addictions.

How much do we understand about the nature of addiction? Why is spirituality seen by many as an important concept in addiction treatment? How can faith-based spirituality contribute to an effective recovery for those suffering with addiction?

It is hoped that the workshop will encourage participants to explore and develop their understanding of the often-misunderstood world of addiction. There will also be an opportunity to consider the topic in ways which are relevant to their particular ministry. It will be of interest to those involved in parish ministry, chaplaincy, spiritual accompaniment and pastoral care.

Revd Jean Boulton-Reynolds has been a parish priest since 1996 and subsequently trained as an Addiction Counsellor. For 10 years she was on the staff team of a residential alcohol treatment centre in South London where she was additionally responsible for the spiritual aspect of the treatment programme. She is currently an Adviser on Spiritual Accompaniment for Salisbury Diocese.

Lunch and refreshments will be provided

Milborne St Andrew Gardening Club

In February we enjoyed a wide ranging talk on garden trees, but the March and April meetings have had to be cancelled, and there are concerns about our plant sale in May due to Coronavirus.



On a happier note about twenty of us enjoyed a successful lunch at the White Horse in Stourpaine

Mark Johnson



Do you have holiday accommodation in Tolpuddle?

We are adding an additional page to the village website (www.tolpuddlevillage.co.uk) as this is a busy holiday area with little accommodation available.

It is hoped that this will bring more business to the local area and enable more holidaymakers to enjoy our beautiful countryside.

Please email Tolpuddlemeeting@yahoo.com if you have any comments or suggestions.

Julia Johnstone

Now in South Dorset

Super Healthy Premium Swedish Pet Food



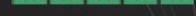
For your Free Pet Assessment & Free Sample

Call/Email **Simon**, Husse Pet Nutritionist

07814 896541 | simon.pope@husse.co.uk

Husse South Dorset

www.husse.co.uk



Tools with a Mission (TWAM)

A Christian charity sending tools across the world

TWAM's mission is to collect unwanted tools, refurbish them, sort them into trade kits and send them across the world for livelihood creation. We want to support local people supporting their own communities and we believe there is dignity through work and the ability to provide for yourself and your family. We believe entire communities can be transformed through training and the provision of tool kits and equipment. Last year we sent twenty 20 foot containers, around 300 tonnes of donated tools to DR Congo, Tanzania, Uganda and Zambia.

How it all began

In 1978 Jack Norwood, of Belle Vue Baptist Church, Southend, was asked by the Baptist Men's Society to head up a project making incubators. Jack went out to Zaire (now the Democratic Republic of Congo) for a year (1979-1980) to develop this. A Waterlooville teacher, John Bennett, became interested and soon involved pupils from his school collecting all kinds of tools, which they refurbished. They organised a "sponsored event" to get the shipping money and these were sent to David Stuckley, a missionary working in Zaire. The Baptist Men's Movement adopted this idea and Tools with a Mission was launched in 1984.

Initially starting in a double garage and shed TWAM had to keep moving as demand grew. In 1999 it registered as a charity establishing itself as interdenominational, gaining support from all the major denominations, as well as many secular organisations. TWAM is now located in its own warehouse in Ipswich with 7700 square feet of floor space. Here much of the refurbishment is carried out, although there are smaller centres across the UK.

The charity today and how you can help

With just four paid staff TWAM relies on a team of over 400 volunteers across the country. John and Wendy Hilton, volunteers in Dorchester have been collecting tools from around the county for 10 years and have visited over 20 projects in Uganda. They commented "Tools can be old, as long as they don't have woodworm. This includes tools for carpentry, plumbing, building, ground clearance, gardening (but not grass related tools), electrical work, car mechanics, computers, and knitting including knitting machines and wool and sewing machines. With a sewing machine a box of related items is sent including material, threads, buttons, zips, hooks, needles, pins etc. Electrical tools and sewing machines are sent, as some areas have power for all or part of the day. It is a win-win by donating tools. They do not end up in landfill in the UK and they have a second life in Africa."

Tools are collected once every 10 weeks and taken to Ipswich, where they are refurbished and then packed into skill sets. Shipping containers are filled with skill set boxes and sent to training centres in the countries we support.

Continued on Page 53

When a young person has finished their training they are given a tool kit so they can set up their own business.

These young people are supported to make sure their ideas are sustainable and help is available to maintain the equipment given. However the youngsters own stories are the most powerful message. This is Morris' story.

Kira Farm, Uganda trains young people who have lost parents, been forced to fight as child soldiers, or who are simply ultra-poor. The one year training courses include tailoring, carpentry, bicycle repairs, construction and farming. When the trainees complete their courses they have all the skills, energy and enthusiasm they need to transform their lives, but they have no means of buying the tools or equipment to do so. This is where TWAM fits in, supplying the builders kit given to Morris on course completion.

When Morris left Kira Farm he knew he had to show his community that he was well trained and could be trusted to build their homes. He decided to show them rather than tell them, when he remembered an old lady in his village, who lived in a dilapidated mud hut. Her son had planned to build her a proper house and had bought some bricks and tin, but died before completing the job. Morris decided to build the lady a house for free, in order to help her out, but also to show the village that he was no longer the 'old Morris', who lived on the edge of crime. He did a great job on the house and it proved to be the turning point of his life.

The whole village was delighted that Morris had built a house for the old lady and were so impressed by his work that he has been inundated with contracts ever since. Overwhelmed with work, he called up a fellow trainee from his time at Kira to come and give him a hand. Morris has also trained two boys in the village in the 'Farming God's Way' (conservation farming) technique he learnt at Kira and he pays them to work in his one acre maize garden, so he can continue with his building contracts. Morris has also been able to get his brother James back into school, as he can now afford to pay the school fees.

Morris is a fine example of what can be achieved when skills and tools replace despair with hope. Not only has Morris had his life transformed, but so have his family and an old lady who never dreamed she would have a new home.

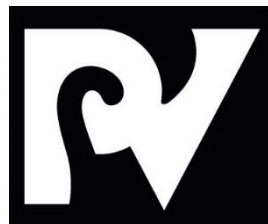
TWAM believes that God's heart reaches out to the poor and that He calls us to follow His example. *"You have been a refuge for the poor, a refuge for the needy in their distress, a shelter from the storm and a shade from the heat."*

Isaiah 25:4 (NIV). Our motivation is to be a refuge for the poor, a safe place to find support, hope and dignity through the provision of tools and equipment.

For more information look at the TWAM website – www.twam.uk or to donate tools contact John and Wendy Hilton jandwehilton@waitrose.com or ring 01305 267098.

A Happy Ending for a Ferret

Scratchy the ferret first made his appearance in a local park where he had been seen a few times, the most recent being when a group of teenage boys were apparently using him as a football! A very brave, young girl rushed to his rescue and told the lads exactly what she thought of them which gave Scratchy time to scuttle for cover. Despite searching for him for several hours the girl was unable to locate him. He understandably then wasn't seen for a week or two and when he did reappear, he was caught and brought into the surgery. It was obvious that he was suffering from dehydration and appeared completely floppy on his hind legs. He had no



strength at all and was uncoordinated and shaking. On closer examination it was obvious that one of his hind legs had been broken and was healing halfway down his femur at right angles to the rest of the leg. Whether this was due to the boys kicking him or a previous injury was unclear as there had been a fair amount of new bone formed already, due to the amount of bone this was most likely a previous injury, but that doesn't excuse the boys treatment of him at all.

Scratchy was given intravenous fluid therapy and kept in a warm environment until he recovered and was eating well. He also had a much-needed bath which he thoroughly enjoyed. The next

question was what to do about his leg? Obviously one option was to rebreak and reset it, but actually he was able to get around very well albeit with a slightly weird action which looked as if he was trying to imitate a frog swimming. It didn't seem to slow him down so it was decided to leave well alone.

The next problem was what to do with Scratchy now? It was obvious he had been well reared as he was as good



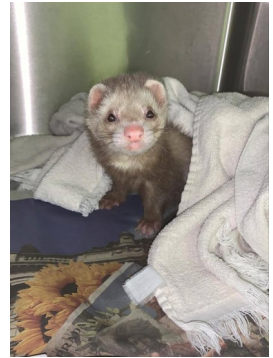
as gold to handle, and never resented anything being done to him.

Really, it was amazing that no one had come forward to claim him as he was so friendly and loved his cuddles and was very affectionate. Much as everyone would have loved him to remain as a surgery pet that couldn't be, it wasn't fair on Scratchy and if we did that to every stray animal that was brought to us we'd very soon need a zoo to keep them all in. Luckily one of our nurses has rather a soft spot for ferrets and has a group of her own, living in luxury in a large aviary in the garden.



Ferrets are much healthier living outside, they need natural light to maintain normal life cycles.

So off Scratchy went to meet his new family, but it wasn't all plain sailing. Despite very careful introductions his new friends weren't all that keen, and Scratchy himself wasn't over happy with the living arrangements and appeared much happier with human company than that of his fellow ferrets. Scratchy is now the sole ferret incumbent in the house alongside an assortment of dogs, cats and birds who all amazingly live in harmony (but not all loose at the same time!) and his best friend is a rather large but very goofy young Rottweiler. The only problem for Scratchy now is staying dry when his best friend decides to smother him in kisses!



Dewlish Church Notes

We have one more **Lent Lunch** in April, and that is on Thursday 2nd April at 12.30pm at Elm View, the home of Daphne and Jim. We would dearly love to see you!

On Saturday 4th April we are holding our **Spring Sale** (10.30am – 12noon) at the Village Hall. This will be held alongside the normal Community Coffee Morning, and our stalls will include new items, cakes and produce, toys and

books, Easter goodies, and a raffle. Of course delicious breakfasts and cakes will also be available as usual. We would be most grateful for donations of cakes etc. and gifts for the raffle.

We hope, once again, to hold the **Agape Supper** on Maundy Thursday (9th April) at 7.00pm in the Village Hall. This consists of a light meal, the reading of the Passion Gospel, and a shortened Communion Service. The meal costs £5 per person and any profit from the evening will be sent to WaterAid. Will you kindly let us know (Tel: 01258 837 466) if you would like to join us, preferably by 5th April please.

Lent Evening Prayer continues in the church on 2nd April at 6.30pm.

The **Good Friday Service** is at 6.00pm, and will consist of hymns, prayers and reflections. We look forward to seeing you on Easter Sunday at 11.00am for **Easter Holy Communion**. Our church always looks wonderful for Easter thanks to the beauty of the Easter flowers and our very talented flower arrangers.

Daphne Burg

Due to the current situation with Covid-19 all church services are suspended and events may be postponed/cancelled.

PUDDLETOWN



Your Community Library Needs **YOU**

**We urgently need people to join the
Puddletown Community Library
Committee to keep the library open**

*If you feel you could help, please contact:
Chris Worpole on 01305 848834*

April's Wordsearch

Even as Jesus ate that last Passover meal with His disciples, He warned them He was about to be betrayed. He took the bread, blessed it, broke it and gave it to them; He took the cup, gave thanks, and gave it to them to drink. The Old Covenant, based on Law, was ticking away its final hours; the New Covenant, based on Christ's body and His blood, was about to be ushered in. Jesus prayed in Gethesame that this fearful cup might be removed from Him, but even more, that God's will might be done. And it was. From Easter onwards we can only approach God through His Son, Jesus Christ, not on our own merit.

26 words to find.....

B	S	E	S	O	G	W	Y	E	G	S	H
N	O	E	H	E	E	E	L	P	T	U	E
P	D	R	D	N	T	H	A	N	K	S	M
B	R	E	A	I	H	S	A	O	L	E	B
O	H	T	V	W	S	N	A	A	A	J	W
D	C	S	T	O	E	C	E	L	D	C	A
Y	A	A	V	V	M	V	I	E	U	K	R
B	O	E	O	A	A	E	S	P	N	U	N
I	R	C	R	V	N	S	R	I	L	B	E
A	P	G	D	B	E	T	R	A	Y	E	D
D	P	W	I	L	L	D	W	T	O	O	S
M	A	B	B	L	O	O	D	E	G	S	A



Easter Monday

Art at St John's Church

Tolpuddle

10am-12

**All ages and abilities
welcome**

**Bring your own
materials**

Draw•Paint•Make

Tea•Coffee•Cake

Milborne Players

PAUSE AFTER PANTOMIME

We were delighted by the enthusiastic audiences we had at the Pantomime. Thank you so much for your support. The Players are emerging after a pause to clear up after the Pantomime. We are reorganising our storage and most importantly choosing our summer production. We plan to go ahead if possible. Put the dates in your diary

26th and 27th June, 2020.

Title to be announced.

Much more importantly

COME AND JOIN US

With a few more members we could be much more flexible in what we present. We need actors but also back stage workers and front of house helpers.

Meet us on Mondays in the Milborne Village Hall at 8 o'clock. Do come and meet us to help you decide what role might suit you.

Our AGM is planned for 20th April, 2020, in the Hall.

Auditions for the summer play will be coming soon.

Jo Coetzee is our Chairperson, she loves to chat 01305 853162.

Londis

R. & O. Ball & Son

Welcome
to Londis Puddletown
Health Lottery
National Lottery
Milk and Dairy
News and Mags
Chilled Beers and Wines
Fruit and Veg
Cash Machine
Mobile Top Up
Instore Butchery
Homemade Pies
Crisps and Snacks
Sweets and Chocolates
Dry Cleaning
Shoe Repairs
Photocopying
Many other services—Just ask!

Londis Stores
High Street
Puddletown

Tel: 01305 848235

Shop Opening Hours

Monday to Saturday
7.00am to 8.00pm

Sunday
8.00am to 8.00pm



Also at
65 High West Street
Dorchester
01305 260738
(next to County Museum)

Shop Opening Hours

Monday to Saturday
6.30am to 9.00pm

Sunday
7.30am to 9.00pm

POST
OFFICE

Puddletown

Post Office ~ Puddletown

Telephone: 01305 849526

Free banking for most bank accounts.

Monday to Friday, 9.00am to 5.00pm

(Closed 1.00pm to 2.00pm)

Wednesday and Saturday, 9.00am to 12 noon