

Parish Magazine

Serving the Church Communities of Puddletown, Tolpuddle, Milborne St Andrew
and Dewlish

OCTOBER 2020

80p

St Mary's Church

WEDDING
TODAY
NO
PARKING
PLEASE





HARDY TREE SURGEONS

EST. 1988

The Professional Arboricultural Service

Specialising in Tree Surgery, Landscaping Garden Management & Utilities
Throughout out the South

- Tree Care for Residential, Commercial, Forestry, Agricultural & Estates
- Tree Surveys, Inspections, Reports & Consultancy
- Highways, Roads & Street Clearance
- Dismantling & Felling
- Pollarding & Veteran Tree Management
- Reductions, Thinning, Pruning & Reshaping
- Crown Lifting & Dead Wooding
- Site Clearance, Garden & Hedge Maintenance
- Tree & Hedge Planting
- Stump Removal
- Logs & Wood Chippings
- TPO & Conservation Applications
- Fully Insured – £10 million Public Indemnity
- Fully Qualified – NPTC
- Tree Works to BSI 3998 : 2010 Standards
- Friendly, Reliable & Efficient Service
- Free Quotations



24 Hour Emergency Call Out

Tel. 01300 341471 ~ Mob. 07774 477435

www.hardytree.co.uk

The Office @ Unit 1 Charminster Farm Industrial Estate, Wanchard Lane, Charminster, Dorchester, Dorset DT2 9RP

email : nickie@hardytree.co.uk

Contact Details		
Editor	The Revd Sarah Hillman	editor@parishmagazine.org.uk
Advertising Manager	Marion Bishop	01305 848 427 advertising@parishmagazine.org.uk
Dewlish Editor	Geoff Bull	01258 837 316 dewlish@parishmagazine.org.uk
Milborne Editor	John Wright	01258 839 090 milborne@parishmagazine.org.uk
Puddletown Editor	Emma Hughes	01305 849 039 puddletown@parishmagazine.org.uk
Tolpuddle Editor	Marion Bishop	01305 848 427 tolpuddle@parishmagazine.org.uk
Distribution Co-ordinators	Jan O'Mara	01305 848 551
	Clare Campbell	01305 849 295
Tolpuddle Distribution	Liz Gould	01305 848464
Annual Advertising Rates to end December 2021 (Sizes are cm)		
Eighth Page - (6.00 x 4.40) - £48.00		Half Page - (12.26 x 9.00) - £130.00
Quarter Page - (6.00 x 9.00)(P) (12.26 x 4.20)(L) £71.00		Whole Page - (12.26 x 18.25) - £180.00

The Editor's decision is final. All items for publication must include name and contact number of the author. Opinions expressed are not necessarily those of the church or the magazine. Advertisers are neither vetted nor endorsed by the Parish Magazine.

Please mention the Puddletown Parish Magazine when responding to advertisers. For magazines by post contact the Distributors as shown above.

Published by the Parish Magazine, St Mary's Church, The Square, Puddletown, Dorchester DT2 8SL.

Produced by Weatherbury Media Services, 01305 848 427.

Printed by LA Digital Print 01202 980103

Copy deadline for the November 2020 magazine is Monday 5th October 2020.

This month's cover photo: The happy couple, Mr & Mrs Cobb. The first wedding in St Mary's since it re-opened for services. Also the first time the Rev. Sarah Hillman had conducted a wedding with the groom wearing shorts AND her first ever wedding on a Sunday! A day to be remembered by all.

read woodruff
chartered accountants



**Practical accountancy and
taxation advice
free initial consultation**

www.readwoodruff.com
online information and advice

24 Cornwall Road DORCHESTER Dorset DT1 1RX
Telephone 01305 265544
e-mail advice@readwoodruff.com



Jane Askew
Carers Connected

Are you struggling with technology?

Do you need help with your iPad or printer?

Jane offers setup and support of all technology for older people.

Small group sessions or one2one in your own home.

Unlimited email/telephone support.

Windows 7/8/10, Apple iPads, Android tablets and much more.

Visit www.carersconnected.co.uk for more information and testimonials.

Or call Jane on 01305 260645 or 07989 322718

**West Dorset
Mobile Foot Clinic**



**Unable to reach or cut your own Nails?
Foot Pain when you walk?**

Then why not have Professional treatment within the comfort of your own home!

- Nail Cutting, including Diabetic Feet
- Corns & Calluses
- Cracked Heels
- Fungal Nails
- Hard Skin Removal
- Ingrowing Nails
- Thickened Nails
- Nail Reconstruction
- Medical Pedicures



Book your home appointment TODAY!

07903 722542 Roy Fox
SAC Dip FHTC SAC Dip FHTP MBFHP

07712 525058 Christine Fox
SAC Dip FHTC SAC Dip FHTP MBFHP

roy@westdorsetmobilefootclinic.com

www.westdorsetmobilefootclinic.com



From the Vicar - Understanding the Bible

As Sarah is away on a much deserved break, we are using the Vicar's Letter from Parish Pump this month

As we acknowledge Bible Sunday this month, it's a good opportunity to ask the question: *why should I read the Bible?*

The Bible is the world's best-selling book of all time. However, it isn't one book, but a library of 66 books, composed by some 44 writers over a period of 1500 years in a range of literature including history, poetry, prophecy, letters and apocalyptic (end times). Despite having a number of different writers, the Bible claims one author: God himself!

This is the basis of the unity of its message and authoritative claim to be the primary way by which God speaks to us: *'All Scripture is God-breathed and is useful for teaching, rebuking, correcting and training in righteousness, so that the man of God may be thoroughly equipped for every good work'* (2 Timothy 3:16). The Bible is inspired (*'the word of God in the words of men'*) and presents itself as a *manual for life*, equipping us to live for God in every aspect of our lives. We also have the promise of the Holy Spirit to guide us in applying the words to our lives: *'the Spirit will guide you into all truth'* (John 16:13).

At her coronation the Queen was given a Bible with the words *'the most precious thing this world affords'*. Does this reflect our own attitude to the Bible?

Don't 'go it alone'

If you are helping others at this time, remember to still leave space and time for yourself. Going the extra mile for other people all the time will only ensure one thing; your collapse. Work in teams. Even the Good Samaritan did not attempt to help the injured man all on his own; he brought in the innkeeper. By sharing the problem, they solved it!

Courtesy of Parish Pump

Taylor's Accountants

Chartered Accountants In Puddletown.

High quality accountancy delivered with a personal touch.

For all your accounts and tax requirements.

Contact us for competitive fixed price work, undertaken for a full range of services, including VAT, payroll and company accounts.

01305 848779

grant@tayloraccountants.co.uk

www.tayloraccountants.co.uk



Knighton
Countryside
Management

WOODLAND • ECOLOGY • LANDSCAPE

**Need a tree surgeon?
Give us a call on
01305 848881**

Our services include:

Stump removal and wood chipping
Tree surgery
Reductions and felling
Emergency tree work
Tree risk assessments
Hedge Laying and fencing
Stump removal and wood chipping
Log & woodchip delivered

Fully qualified and insured staff

All jobs undertaken both large and small

Friendly advice, free no obligation visits and quotes

Contact us now on: 01305 848881



Dorset
Studio School
LAND & ENVIRONMENT

office@knightoncountryside.com

www.knightoncountryside.com

Unit 37, Enterprise Park
Piddlehinton DT2 7UA



Piddle Valley Vets is a veterinary surgery where we look after every aspect of your pet's health and welfare. We match the highest quality and most up-to-date clinical techniques with a caring, compassionate and open environment.

The practice is located in the old GP Surgery in the picturesque village of Puddletown. There is plenty of on-site parking and the building has been extensively refurbished and then equipped with facilities to house animals of many different species in the most comfortable and relaxing way possible within a clean, clinical environment.

Telephone 01305 848820

www.piddlevalleyvets.co.uk

"Keeping Your Pets Well"

David Holah BVSc CertZooMed MRCVS

A message from the Parish Magazine Working Group - We are back!

Well, what a time we are all living in. And it is because of the Covid 19 situation that we have not been able to supply a hard-copy version of this magazine for the past few months. Some of you may have found a shorter on-line version which will continue, but we are now in a position to resume printing and delivering to our subscribers who we know have missed the regular delivery through the letter-box! So another step towards something a little more normal for us all.

There are some changes:-

The subscription year will now begin on 1 January. Those of you who already subscribe are owed two editions from the 2019/2020 year - May and June - so to cover our debt to you, we are supplying **'15 for the price of 12'**! In effect you will receive October, November and December 2020 issues and your new subscription will commence 1 January to 31 December 2021.

The price remains the same at **£7 for the year**, and you will be receiving your renewal form and the brown envelope - both for completion as usual please - ready to return to your distributor as soon as you can.

To avoid having to handle cash, we are asking you to pay your subscription by **cheque** wherever possible please, just for this next year. **Payable to Parish Magazine.**

Should you wish to begin a subscription, the Distribution Team are listed on **page 3**. Call us.

We also invite you to consider **Advertising within the magazine.**

There are close to 340 recipients of the hard-copy version every month in the Benefice area, and during lock-down our statistics showed a huge number of hits on the version we linked to the Community Facebook and the Benefice Website, so your business, your classes, whatever you offer to us, can benefit from a local listing. For those who already do advertise we are applying the same **'15 for 12'** to cover our debt to you. Please contact our listed Advertising Manager or any of us from the Working Group - **page 3 again** - and we will tell you more about how easy it is and what options we offer on that. It could really help your business take-off again now life is picking-up in a different way.

Naturally, with our **events and clubs** being unable to take place over the summer, our much-loved reports of those are missed, but we know some things are resuming - albeit in a slightly different socially distanced form for now - and we readers love to hear what you are all up to!

Lock-down re-thinking! That spirit of finding another way around things, we are excited to hear how your creativity has developed, so do send us your articles, large or small. And if you need a guide on how to do that - **yes, it's page 3 again!** Call us about anything really.

Continued on Page 9

Stitchinghouse Design

Curtains & Interior Design
Beautiful Fabrics
Blinds
Interior design showroom
workshop direct prices

Monday ~ Friday 9 – 4
Saturday 9-12

3 Pummery Square, Poundbury,

01305 250782
www.stitchinghouse.co.uk

JURASSIC PURBECK AERIALS.COM

**SKY FREESAT AERIALS WI-FI
TV MOUNTING
SAME DAY SERVICE
OAP DISCOUNT
07976 222 887
01929 553705**

PICTURE FRAMING

Over 20 years experience. Large range of frame mouldings and mount colours.

Five types of glass.

Needlepoint and Tapestries,
Stretching and Framing.

Mirrors made to order

Telephone 01305 265137 to arrange an appointment or home visit.

R.A. Clarke-Williams
THE CHEST OF DRAWERS
DORCHESTER

44 Manor Road, Dorchester, DT1 2AX



Clox On Time

69 Monmouth Road
Dorchester. DT1 2DE
01305 250442
www.cloxontime.co.uk

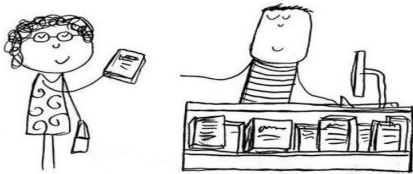
Clox On Time is a family run

business carrying out servicing, repairs and restoration to all types of clocks and time pieces. We sell a varied selection of clocks and watches. We are stockiest for Royal London, Lorus (made by Seiko) and Limit. We have a small selection of Timex & Cannibal watches. Batteries and straps fitted, usually while you wait. Feel free to ring Graham or Debbie for any advise or estimates. Please mention the magazine.

Life has been tough for us all, but there has been opportunity for taking some photos of our glorious communities, writing about them, maybe creating a new recipe for our regular slot, or some musings on **'Life in lock-down'!** We would love to hear from you.

PMWG

Do you have unwanted books and DVDs?



Why not donate your adult and children's fiction books, talking books, DVDs and jigsaws to Puddletown Community Library for the Free Loan Section?

We can only accept paperback books, which are in good condition.

St Mary's Puddletown—October 2020

Intercessors		Scripture Readers
4th	Bob Todd	Pat Sparks
11th	Family Service Team	
18th	Dawn Loveless	Peter Bishop
25th	Cynthia Metcalfe	Judy Bumby & Pat Bishop
PCC Charity Donations <i>Please give prayerfully and generously</i>		
Lent		Bishop's Fund for Sudan
Mothering Sunday		Mosaic
Easter Day		The Salvation Army (Homeless)
Harvest		R.A.B.I . And Water Aid
Christmas		The Children's Society

P.N.GRAY

ELECTRICAL LIMITED

AGRICULTURAL – DOMESTIC
INDUSTRIAL - COMMERCIAL INSTALLATIONS
ESTABLISHED OVER 60 YEARS
VAT NO: 185-883-509

ALL ELECTRICAL WORK UNDERTAKEN FROM
INSTALLATIONS TO MINOR WORKS
INSPECTION AND TESTING
REWIRING AND MAINTENANCE

GIVE US A CALL FOR A FREE NO OBLIGATION
QUOTATION OR JUST SOME FRIENDLY ADVICE



Tel: 01258-837354
Mobile: 07774-838851
Email: pngrayelectrical@btinternet.com



DOGTREKKER

DOG WALKING AND PET CARE SERVICES

A reliable dog walker and pet care service. Fully insured and police checked. Trained in Canine first aid, Small animal nutrition, and Canine behaviour. Individual or group walks available.

Tel: 01305 854365 Email: info@dogtrekker.co.uk Website: www.dogtrekker.co.uk

KMc Electrical Services

All types of electrical work undertaken for domestic, industrial and commercial properties

- Extra points to full rewiring
- Test & Inspection of building wiring
- Three phase
- Emergency callouts

No job too small

Professional, Quality service

Tel: 01258 881439 Mob: 07712 646131
Email: info@kmcelectrical.co.uk

ELECSA

REGISTERED MEMBER
ECA





St. Mary's Church Events

Your Church in Lockdown

While we had to close our church during 'Lockdown' because of Covid 19 we are now resuming some services again with restrictions. But! Your Parochial Church Council and its sub committees have not been idle! Organising three projects to protect and enhance our church.

The first has been the removal of three of the 'Tower Bells' head stocks for repair and they are now with Taylors of Loughborough. They should be back and remounted by the end of September,

enabling Robin Mears and his tower team to resume ringing with a sure mind that the bells will stay put when in use. Likely costs for this project are currently running at about £12,000 net.

The Altar rail has been expertly rebuilt, as it was in danger of toppling over, and is now back in place, though when we are able to resume using it is anyone's guess! Cost £560.00.

The tower itself is undergoing lots of repair work, mostly inside, following our five yearly inspections by our Architects Crickmay Stark. The lightning conductor, the weather vane, the clock room, the bell room and the ringing room all are receiving much needed attention (see pic) the downpipes the soakaways outside are also being unblocked and updated, along with repairs to the lead roof leaks! All of this following the five year inspection findings has been organised through lockdown by a small team headed by Ursula Pomeroy co-opted to the PCC. And all should be finished by October barring any further discoveries of extra works required. Costs for this project estimated at £19k,000 net.



And our third project is now underway, which is the development of the land behind the old school for use as an extension to the existing grave yards. Estimated cost is £45,000. This is a three year project to change the derelict land for proper use for villagers to be buried locally in the future, as space is running out! This is going to prove very difficult and costly as there are land drains and concrete left over from the lands previous use as a site for temporary classrooms. Voluntary work parties have made a start in clearing the site of foliage and debris, but a lot more needs to be done before the professionals move in to work on the site. So! If you are able to give a helping hand to clear the site, or, donate monies for the project, or require further information about any of the above, then please do get in touch.

Bob Todd (Treasurer) 07770575295

D&H Autos

New Street, Puddletown. DT2 8SF

Tel: 01305 848847



Service and repair - all makes and models
MOT's carried out by own staff in Poole
Free local delivery and collection

- ✓ Highly skilled, dealer trained technicians
- ✓ The very latest in diagnostic equipment
- ✓ The expertise you expect from a dealer

Menoc Motors

14 Ventura Place, Upton Industrial Est.



Upton, Poole. BH16 5SW

Tel: 01202 624200

Dedication from 'an erstwhile churchwarden'.

SANDRA MARY DRAKE

COVID-19 meant that only limited numbers could be inside St Mary's for Sandra's farewell service. This did not, however, deter the many villagers who quietly stood in the sunshine, near the church, during both the service and burial. It was testimony, if any were needed, of the respect and admiration in which Sandra was held and did not go unnoticed by Phil, Chris and Tracy.

Phil and Sandra moved to the village in 1977 and were married for over 54 years. It was well known that Sandra had a deep, profound and unwavering faith. Even when pretty unpleasant things were in store for her, when love is true, Sandra believed that death was emphatically not the end. She was gracious and accepting of her final illness.

Sandra committed quietly and steadfastly to the community, and particularly St Mary's and took on many, often unenviable roles. Trustworthy.

Succeeding her as churchwarden, I was in awe of her knowledge and capabilities without reference to books, notes or indeed Google - quite unlike myself when in the post. She knew her stuff. There was a lot to know.

Sandra supported me in that handover year with patience, kindness and good humour, she was someone to be like. A role model.

She was also an immense personal supportive calm to me when a major health crisis beset my family. Consistent.

It is unquestionably right and proper that the Parish pay tribute to Sandra's quiet devotion to her family, friends, the village, her love and knowledge of the natural world, and her church.

Her Canadian friend Mo is thankful she had Sandra as a friend in her life. We echo that. Sandra made the time to quietly make such a meaningful, positive difference, often through some testing times.

What a miracle it is that for the short time we are here, we meet each other, but some make an everlasting impression.

A lovely lady.

September 2020.

Sandra's service was recorded and can be accessed at <https://youtube/TolHOWLBk64>

Grassby's, Princes Street, Dorchester will continue to accept donations for the Joseph Weld Hospice, where Sandra was as one would imagine, 'a joy to care for'.

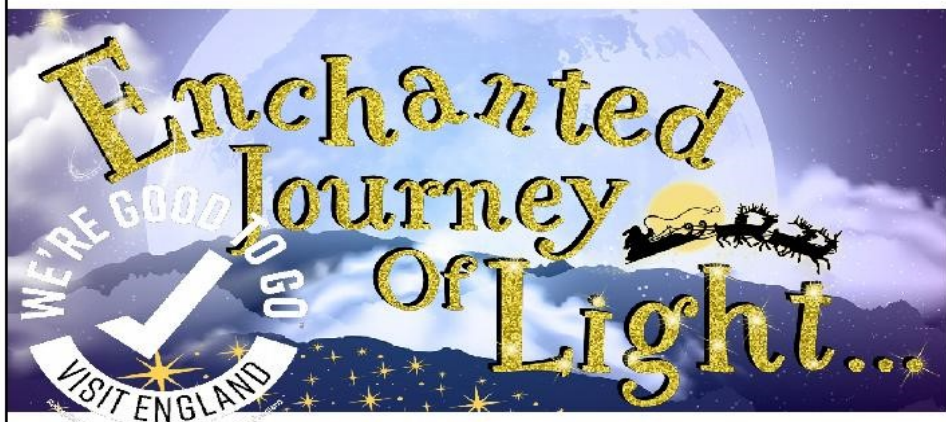
Crossways Travel

Executive Coach Travel With A Personal Touch

01305 851697

DAY EXCURSIONS AND HOLIDAY TOURS ON COACH
picking up in PUDDLETOWN, TOLPUDDLE and DORCHESTER.

Come and experience coach travel with a difference.



ONCE IN A LIFETIME OPPORTUNITY

THURSFORD ENCHANTED JOURNEY OF LIGHT

November 17th, 2020

£399

Thursford is usually famous for a fabulous Christmas Show. This year, for one year only Thursford is doing the Enchanted Journey of Light. An all new indoor Wonderland Trail: a maze of engines, fairy-tale characters and an immersive experience of light and sound including one of the UK's biggest kinetic light displays, will lead outside to a 4 acre Lantern Light Extravaganza: a beautiful, breath-taking festival of luminous sculptures, from a fantasy forest of jungle animals to the wilds of the North Pole. So why not make this the year to visit Thursford.

2021 HOLIDAY BROCHURE IS OUT
CALL US FOR YOUR COPY

01305 851697 www.crosswaystravel.co.uk

A Month on the Farm – October

With the long hot days of summer over and the harvest finished, autumn cultivations are underway, new grass leys were sown in early September along with a temporary Winter Mustard crop which is grown as a green cover and helps the soil structure and organic matter, and all the turnips are drilled for sheep and cattle to graze through the winter.

The heavy cultivator is run through the stubble to try to get a germination of the previous crop losses and weed seed, some fields will have a coating of muck and odd patches of fields which are too acidic will have some lime applied, ready for the new seeds to be sown. The seed is sown with a direct drill directly into the soil and then rolled to consolidate the ground to try and stop the slugs eating the new shoots.

Some of the seeds which we sow are home saved from this year's harvest which we get cleaned and dressed against diseases and pests. We are drilling some oil rape seed later than we would normally as there is now no seed dressing to protect it from a beetle which can cause serious damage to the crop while it is growing and wiped all ours out last autumn, so trying a different approach!

The rains have made the grass grow which has made a nice autumn flush, but the quality of the grass is not as good this late in the year so the young stock are getting supplement of home rolled barley.

The teaser rams (a vasectomised ram) are in with the ewes to get them cycling together so for a more concentrated lambing period, with the rams going in with the ewes in the middle of the month for a February lambing – forward planning!

We had another good sale last month of store cattle and have another TB Test at the end of the month, hopefully going clear.

Wakely Cox

5th September 2020





Greeting Cards * Gift Wrap
Invitations

Quality stationery items for up to 50%
less than high street prices.

ROSEMARY BUCK

3 HIGH STREET PUDDLETOWN

DORSET DT2 8RT

Tel: 01305 848575

Email: rbuck88.rb@gmail.com

www.flamingopaperie.co.uk/web/rosemarybuck/



Blanchards Bailey
Solicitors



With you for
life's journey

www.blanchardsbailey.co.uk

Call us on: 01305 251 222

I.J.SPILLER & SONS

PAINTERS & DECORATORS

PROPERTY MAINTENANCE

EXTERIOR & INTERIOR

FREE ESTIMATES

Tel: PUDDLETOWN

Office:- 01305 848523

Mobile:- 07825 184683

E-mail : nspiller@btinternet.com

REFURBISHING DORSET PROPERTIES WITH A QUALITY SERVICE

Puddletown Area Parish Council

The Parish Council is currently meeting remotely on the second Tuesday of each month in order to comply with current government guidance. These meetings are still open to members of the public and information about how to join the meeting is included at the bottom of each agenda. Any member of the public wishing to raise an issue or make representations relating to an agenda item will be given the opportunity to participate. Alternatively, any comments can be emailed to the Clerk in advance of the meeting at puddletown@dorset-aptc.gov.uk.

At its September meeting the Council received a report from PCSO Donnison which is available on the Parish Council website. The Council will feedback to her reports of illegal motorcycling in Puddletown Forest however it is important that anyone who notices such activity, reports it directly to the police either via 101 or online at <https://www.dorset.police.uk/do-it-online/>

The Council urges all those interested to read the new government planning reform proposals and to submit their comments. This can all be done online at <https://www.gov.uk/government/consultations/planning-for-the-future>

The Parish Council Chairman has written a report which details the Parish Council's activity for the year 2019-2020. This is available on the Parish Council website or by contacting the Clerk.

School buses are repeatedly becoming stuck in Puddletown, usually on Coombe Road but occasionally New Street. This is usually due to parked cars at narrow parts of the road which prevents busses from passing through. Sometimes obstructions also occur when buses are trying to pass vehicles which are travelling in the opposite direction. School busses travel up to the Middle School on New Street and back town to High Street via Coombe Road. If all other drivers could observe this unofficial one-way system where possible, particularly during school drop off and pick up times, it will help to alleviate the problem but more importantly, parking along narrower parts of the road should be avoided. The school is relaying this message to parents.

The Parish Council has received a request to consider parking restrictions along Coombe Road and New Street. The Highways Authority has suggested that restrictions at specific times of the day could be appropriate in places although there is an understanding that residents do require parking and it is therefore desirable not to impose parking restrictions unless absolutely necessary. This will be discussed at the Parish Council meeting in October. Any resident with an opinion either way may join the meeting to comment or can contact the Clerk in advance by emailing puddletown@dorset-aptc.gov.uk.

Some dog walkers have been seen accessing the recreation ground through the play park in Puddletown. A polite reminder: dogs are allowed on the recreation ground on leads as long as they are kept off of the sports pitches but please do not allow dogs into the play park at all. If you have older children who walk

Continued on Page 19

A.M.T Building & Gardening Services

Andy Thorne
Stone Bungalow, Burleston

Tel: 01305 848188
Mob: 07970824511
e-mail: andrewt.thorne930@googlemail.com

Most Aspects of Building & Gardening Maintenance undertaken.

Grasscutting and Hedgetrimming.
Brickwork and Blockwork.
Carpentry and Timber Structures.
Decking, Patios & Concrete Bases.
Painting and P. V. C. Fascias,
Soffits and Guttering.

Free Written Estimates. No V.A.T.

SUGARING

**Removal of unwanted hair
with smooth, soft results.**

No more stubble.

**Suitable for all areas of the
body.**

Ladies only.

Bere Regis. Free parking

**Contact Jackie Legg for more
information on 01929 471068**



www.hustingselectrical.com
office@hustingselectrical.com
Office: (01258) 837385 Workshop: 839052
Mobile: 07973 574 215 or 07549 380 217
New Services / Traditional Values
Call or Email us with your requirements.

Hustings Electrical Ltd.

Electrical Contractor Since 1980 - New Technical Services Division

Agricultural - Commercial - Industrial - Bespoke Panel Building & Controls
Domestic - Equestrian - Fire & Intruder - SMS & Programmable Logic Automation
Alarms - Emergency Lighting - Test & - Computing Infrastructure Services
Inspection - Control Systems & Panels - Data Recovery - Firewall Security
CCTV - Data Cabling and Computing - Custom Builds & Repairs - Malware Rescue
Security & Access Control Systems - Website & WebApplications - IP-CCTV




dogs, please make sure that they understand that they cannot walk them through the play area.

The Parish Council still has a number of vacancies. Anyone interested in becoming a Parish Councillor will be able to find further information on the Parish Council website or can contact the Clerk for details.

The next Parish Council meeting will be on the 13th October. Please see the Parish Council website or noticeboard for the agenda which will be available from the 8th October.

Puddletown Weather

Site location (GPS): N 50° 44.937' W 2° 20.862' altitude 88.39 metres (somewhat sheltered from easterly winds)

August 2020		
	Rainfall for the month	97.20 mm
	Cumulative for the year	575.10 mm
	2019 Rainfall for the month	75.00 mm
	2019 Cumulative for the year	473.70 mm
	Temperatures	Max. 34.40° C Min. 7.50° C
	2019	Max 31.50° C Min 7.40° C
	Maximum wind speed	22.80 mph
	2019	19.70 mph

JURASSIC

— COMPUTERS —

*The incredibly friendly
computer people*



Call Darrell Hounsome or Lee Thompson for
jargon free, patient, friendly computer help for
home and business users.

Whatever your computer problem, call us... we can help!

01305 755668

Repairs • Servicing • New PCs & Laptops • Training • Virus Removal

Are you ready for a new PC or Laptop? If so, come and see us. We offer a complete service and will guide you through the whole process. We can supply, update, set-up and then transfer your documents/emails from your old system. We will give you the benefit of our combined 37 years experience gained whilst working for Kingston Maurward College in Dorchester.

Email: info@jurassic-computers.co.uk ~ Website: www.jurassic-computers.co.uk

PROSPECT HOUSE, DEVEREUX AVENUE, EAST BOUNDRIARY, DORCHESTER, DORSET DT1 3WF

GRASSBY FUNERAL SERVICE

*Still a family run business,
serving the local community since 1861*

8 PRINCES ST,
DORCHESTER

Tel. **01305 262338**

(24 Hour Service)

www.grassby-funeral.co.uk

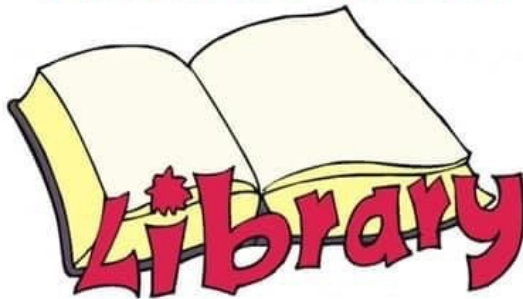


Golden Charter
Funeral Plans



MEMORIAL MASONRY

PUDDLETOWN COMMUNITY LIBRARY IS REOPENING!



SATURDAYS 10AM-12PM
STARTING 1ST AUGUST

- You will be asked to queue outside
- Please bring your library card as we will need it for Trace and Track purposes
- You must wear a face covering
- We regret that until further notice you will be unable to order books

The Spring Grove Forge Ltd

WROUGHT IRONWORK



Specialising in:

*ornamental ironwork
plain ironwork,
fire escapes and
steel fabrications*

PUDDLETOWN 848328

COOMBE ROAD, PUDDLETOWN, NR. DORCHESTER

**Art Classes
Willoughby Cottage
Puddletown**



**Life Drawing, Portraiture
Watercolour
Call
07970675429**

Abbey Swimming Club

Based at Milton Abbey School in Milton Abbas we use a 25 metre indoor pool for 3 sessions each week.

All sessions are covered by a Lifeguard.

Membership is open to all. Members range from those less than a year old to over 80. We are a social and friendly club, so join us for community spirit, fitness and health.

Great value annual membership means you can swim for a little over £1.90 per week.

Adults: £100pa Family: £240pa*

*2 adults plus up to 4 children at the same address

Juniors (under 18): £55 or
£35 as part of a Family membership

Children under 3 as part of a Family: FREE

Club session times:

Tuesday 6.45pm – 8.30pm

Saturday 10.00am – 12 noon

Sunday 8.00am – 9.00am

Interested? Come along to the pool during any session time to pick up an application form or to take your FREE INTRODUCTORY SWIM or contact
Lynn 01258 881443 or Pat 01258 880601



**DORCHESTER
FRAMING**

COMPREHENSIVE AND FAST PICTURE FRAMING SERVICE

- Re-glazing, re-mounting and re-furbishing of existing frames.
- Specialist reflection-control and UV protective glass available.
- Stretchers made to order in all sizes.
- Professional restoration of both oil and works on paper.
- Trade prices for regular artist framing – *please enquire.*

The Old School House
Tinton, Dorset DT2 8QR
T 01305 848 909 • M 07901 946 102

Wings over Dorset

Dorset, without a doubt, deserves the appellation 'God's own Country'; it provides the president with a rich palette of colour and character which is mesmerising in its appeal. It is a county bestowed with numerous 'little gems' which delight the locals as much as they do the 'grockles'. Many are not hard to find but some remain hidden away, only coming to light when a simple reason, a chance encounter brings them to light and so it was with us and a singularly fascinating place.

I doubt but a few know of 'Xtreme Falconry, nestled away from the limelight close to West Stafford. For people not already fascinated by the hobby of Falconry it is easy to know of; for others its is not. For Emma and I we stumbled upon it by looking for somewhere that would appeal more to Harry and Jacob than the latest gaming wizardry; it was a wise choice!

Birds of prey seem to have a spell binding effect on people, watching them soar high above or hugging the ground at breakneck speed ; there is an empirical grace about them. Watching the expertise, brought on by a heartfelt commitment to the birds and their welfare, of the sites owner Martin Ballam and the various members of his family one cannot but stand in awe of what you are witnessing before your eyes.

Martin, along with his wife Tara set up Xtreme Falconry after 11 long years of planning. For Martin it was a dream come true; from his 6.9 acre centre he fulfils what he set out to do namely the education, informing and inspiring of the public into the plight of these magnificent creatures and to dispel many of the negative views perpetrated by myth and hearsay regarding the nature of the birds.

There is a homely feel to the centre with the cafe, information centre and, of course, the mews where birds are displayed in such a way as to allow people to get up close and personal to the birds.

It is amazing to witness up close the different varieties of the various species of raptors on display, from the immense presence of the Bald eagle to the petite cuteness of the kestrel.

However, all this said the thing that really brings the place alive is the numerous flying displays carried out during the day. Conducted by Martin and his various children these are breathtaking, literally in some cases when a falcon flies so close to your head that you feel the draught on your neck. All the time the momentum is maintained by Martin's humorous, but highly informed commentary; he is the consummate showman with a deeply felt message to relay to all those who listen.

Martin's latest project bares the hallmark of the salvation of a species of falcon few have heard of, including myself. Project Lugger is the moving crusade to protect and ensure the survival of a particularly endangered species of falcon originating in Pakistan. Martin's commitment in joining a relatively small band



KNIGHTON

Plumbing & Heating



Daniel Dorton

6 Glebe Way, West Knighton

Tel: 01305 853893

Mob: 07837 654921

**All aspects of plumbing work from a dripping tap
to a full central heating installation**

Fully qualified, fully insured, all work guaranteed, references available
High quality work at competitive rates, local plumbing competition winner
24 hour call out with no call out fee, free quotes
10% discount on labour for OAP's



"Right first time"
"Installing quality into your home"



CHRIS RAWLINGS

Building and General Maintenance

FREE QUOTATION

FULLY INSURED

**Extensions
Re-Pointing
Plastering
Painting**

Brick and Block Work

**Fascia, Soffits and Guttering
All Garden Works**

**Patios
Driveways
Fencing**

Call Chris on 07833467176 Or 01305 251974
chris.rawlings01@yahoo.co.uk
www.chrisrawlingsbuildingandmaintenance.co.uk

of falconers bares testimony to his deep seated caring nature to the birds he obviously loves. The task seemed almost doomed to failure back on May 6th 2017 when Bob Dalton made it a reality. However, the initial fears dissipated when the project really took off and substantial headways were made. This positive beginning brought rewards in the form of four major patrons (now 5) who have stood resolute behind the project. As part of his major involvement in the project (which includes a new breeding area being assembled) Martin has hosted, on Saturday September 12th 2020, 'Lugger Day' which saw the principal players of Project Lugger gather at Xtreme Falconers for a day of intense flying in the ring involving, at one stage 3 birds in the arena at one time. It was an incredibly exciting experience and at its close Bob Dalton himself stepped into the flying area and announced that the board of patrons had chosen Martin as the projects 5th patron, an accolade well deserved.

I would certainly heartedly recommend anybody to go along and enjoy the experience of getting up close and personal with these beautiful birds of the air.

Rod Hughes



Martin with Lugger Falcon Kylar

Kylar the lugger falcon



Offering an extensive range of landscaping and home improvement services

Contact Bradley:

07444813816

bespokelandscaping@hotmail.com

www.bespokelandscapingandgardenrooms.co.uk

We are big enough to cope but small enough to care



CONTACTS PAGE - Please help us keep these pages up to date by notifying us of

CLERGY	The Revd Sarah Hillman (Vicar)	01305 848 784
	Sarah.c.hillman@outlook.com	
RETIRED CLERGY	Rosie Coldwell	01258 839 214
	The Revd Sue Turner	07775 710 429
CHURCHWARDENS	Vacancy (Puddletown)	
	Vacancy (Puddletown)	
	Hilly Cobban (Tolpuddle)	01305 848 552
	Julie Bonner (Tolpuddle)	01305 848 027
	Pam Shults (Milborne St Andrew)	01258 837 203
	Vacancy	
	Sue Britton (Dewlish)	01258 837 218
	Jim Burg (Dewlish)	01258 837 466
BENEFICE OFFICE	Emma Hughes	01305 849 039
(www.puddletownbenefice.org)	puddletownbenefice@outlook.com	
PUDDLETOWN CONTACTS		
Alcoholics Anonymous	Alcoholics Anonymous	
Area Parish Council	Peter Churchill	01305 849292
	Email:peter.churchill.gooner@gmail.com	07407 235798
Area Parish Clerk	Mrs A Bendall	01305 849 596
	puddletown@dorset-aptc.gov.uk	
Bell Ringers	Robin Mears	01305 848 021
Carer's Association		
Children's Society	Dawn Loveless	01305 849534
Church Room	David Jeffreys	01305 848 211
COMMUNITY LIBRARY - Run & financed by volunteers. 01305 848 506		
Opening Hours:-	Monday: 3.00pm to 5.00pm	
	Wednesday: 3.00pm to 5.00pm	
	Friday: 3.00pm to 5.00pm	
	Saturday: 10.00am to 12.00noon	
County Councillor	Emma Parker	
Cricket Club	David Stevens	07720 411 952
Cubs, Scouts & Beavers	Alf Justin	01258 839 080
Football Club	Steve Brown	07789 821 408
Flower Rota	Heather Mears	01305 848 021
Footpaths & Rights of Way	Phil Drake	01305 848560
Friends of Puddletown Church	Ursula Pomeroy	01305 264 516
Friends of Puddletown Library	Mary Berry	01305 848 557
	Steven Buck	01305 848 575

CONTACTS PAGE - Please help us keep these pages up to date by notifying us of any changes		
DOCTORS		
Puddletown Surgery Dr J Griffiths, Dr C Burnham & Dr J Bond		01305 848 333
Puddletown Surgery (Dispensary)		01305 849 329
Out of hours medical advice & NHS Direct	Out of hours medical advice & NHS Direct	111
Gift Aid Co-ordinator	Bob Todd	01305 849 048
Guides, Brownies & Rainbows	Amy Knight	01305 848 602
Handbells	Bob Todd	01305 849 048
Mini-Soccer/Youth Football	Jon Palmer	07891 173 999
Neighbourhood Plan	Paul Langdon	01305 848 307
Organist		
PCC Secretary	Emma Hughes	01305 849039
PCC Treasurer	Bob Todd	01305 849 048
Puddletown Countrywoman's Club	Sylvia Hanby	01305 849 562
Puddletown CPPP	www.facebook.com/puddletownplaypark	
Puddletown Pumpkins Toddler Group	Kelly	07786 916515.
Puddletown Society	John Ridout	01305 848 940
Recreational Multi Games Area	David Knight	07890 260 320
Recreation Ground Pavilion	Liz Knight	01305 848 380
Royal British Legion (RBL)	S Ridout	01305 848 940
Rugby Club	Ray Stephens puddletownrhc@hotmail.com	07966 412 467
SCHOOLS		
Pre-school	Sharon Brown www.puddletownpreschool.co.uk	01305 849 533
Pre –school	Laura Evans	
First School (Head Teacher)	Mr D Hunwick www.puddletownfirst.dorset.sch.uk	01305 848 206
St Mary's CE Middle School	Darren Ayling—Head Teacher	01305 848 293
Short Mat Bowls		
Sunday Church Creche	Vacancy	
Sunday Seekers	Lynda Skinner	01305 849 485
Village Hall Caretaker/Bookings	Kevin Smith (puddletownvh@gmail.com)	07706 798271
Village Hall Committee Secretary	Nancy Vincent	01305 848 218
Yoga	Mandy Cooper	07713 477737

CONTACTS PAGE - Please help us keep these pages up to date by notifying us of any changes

Young Farmers (Dorset)	01305 263 947
------------------------	---------------

TOLPUDDLE CONTACTS

Craft Club	Teresa Turner	01305 849 060
Orchard Meadow	Anna Bendall—Clerk to	01305 849596
PCC Secretary	Jayne Brayshaw	01305 849 314
PCC Treasurer	John Taylor	01305 848 552
Streetfair	Annette Pitman	01305 848 219
Tolpuddle Home Group	Simon Dodd	01305 848 171
Tolpuddle Old Chapel Trust	tolpud- dleoctrust@btinternet.com	tolpuddleoctrust@btinternet.com
Tolpuddle Toddler Group	Maria Palmer	07717 506020
Tolpuddle Village Meeting	Julia Johnstone, Clerk.	tolpuddlemeeting@yahoo.com
Tolpuddle Village Show	Jo Austwick	austwickjoanne@gmail.com.
Village Hall Bookings Sec.	Diana Foreman	01305 848 419
Village Hall Chairman	Peter Walton - pdwal-	01305 848 034
Whist Drive	Diana Foreman	01305 848 419
Yoga (Iyengar)	Sue Chapman	01305 848 053

USEFUL & EMERGENCY NUMBERS

Benefit Enquiry Line		0800 88 22 00
Dorset Community Action	info@dorsetcommunityaction.org.uk	
Dorset County Hospital		01305 251 150
Electricity Failure (Southern Electric)		08457 708 090
Gas Leak or a smell of gas		0800 111 999
POLICE—Local Officers	PC Moore 0229 & PCSO Alison Donnison 6500	101 or "Contact Us" section on Dorset Police Website

DEWLISH CONTACTS

Cricket	Elaine Kellaway	01258 837 696
Ladies Group	Judith Bridgen	01258 837 157
Parish Council	Andrew Booth (Chair)	01258 837 284
Village Hall (Chair)	Bernie Cosgrove,	01258 837 152
Village Hall (Sec)	Alex Carter	01258 837 312

CONTACTS PAGE - Please help us keep these pages up to date by notifying us of any changes		
MILBORNE ST ANDREW CONTACTS		
Allotment Society	Joy Robinson	01258 837 661
Archery	Sheila Ryall	01258 837 504
Athletics (Information)	David Pearson	01258 837 057
Badminton	Bruce Dyer	01258 839 117
Bellringers	Pip Howell	01258 837 329
Busy Bees Group (Under 5s)	Claire Tudge	07970 734 162
Cribbage	Peter Anthony	01258 837 089
Food & Wine Club	Rose Frost	01258 837 921
Football (Youths)	Andy Brown	07427 503 373
Gardening Club	Sally Dyer	01258 837 061
Ladybirds Playgroup	Liz Dyer	01258 839 117
Milborne First School	Sharon Hunt (Head Teacher)	01258 837 362
Milborne Players	Roy Sach	01258 837 033
Nightsabre Dog Training Group	Natasja Lewis	07896 275 357
Neighbourcar	Nigel Hodder	01258 470 333
Parish Council	Richard MacNair	01258 837 912
	Wayne Lewin (Clerk)	07419 136 735
Patient Voice Secretary	Nigel Hodder	01258 880 229
Pilates	Claire Barratt	07703 648869
Round Robin Ramblers	Ian Bromilow	01258 880 044
Scout Group	Sam Elliott	07873 762 035
Sports Club	Richard Lock (& Bookings)	01258 837 929
Swimming Club	Pat Cowan	01258 880 601
Tai Chi	Brian Burton	01258 839 033
Tap Dancing (Adults)	Kevin Selby	01305 250 386
Tennis - Member's Secretary	Richard Hawker	07383 309 037
Village Hall	Pam Shults (Chair)	01258 837 203
	Alison Riddle (Bookings)	01258 837 148
Wednesday Social Club	Sheila Burton	01258 839 033
Women's Institute	Lesley Clarke	01929 471 732
Yoga –at First School (Iyengar)	Sue Chapman	01305 848 053
Yoga—at Village Hall	Sarah Ryan	01258 839 230
Youth Club (8-13 years)	Joanne Miller	01258 881 496



St John's Church Tolpuddle—October 2020

Well- actually not much to add to last month- in fact I think I will repeat some of that for those of you who have not been receiving the magazine on-line-

We are now having regular services, be they a little different- we have a “meeter and greeter” who takes details for

contact tracing – and then you are shown to your seat, which is at a safe distance from anyone else. The congregation is not allowed to sing but a small group of professional and non professional singers can sing along- which they did at Go Fourth on August 23rd. much to the delight of the reduced congregation. Otherwise we have taped music, sensitively chosen by Sarah- thank goodness for our new music system!

We now have to wear masks unless we are doing a reading or intercessions. Yes it is all very difficult and different but it is so wonderful to have some services actually in the church that we comply and recognize it as the new way. Meanwhile the church is open Wednesday and Sunday for private prayer.

A reminder of the services here at Tolpuddle-

October 4th- 9.30 Harvest Festival—with band and choir.

October 11th- 9.30-Joint Methodist Service

October 18th- 9.30 -Communion

October 25th- 9.30- Go Fourth

I am sure that you will enjoy any one of these services- we are so lucky to be able to offer such a variety to suit everyone.

Don't forget the Annual General Meeting (APCM) which will be held in the church on Wednesday October 7th at 7.30pm. All are welcome- particularly if you are interested in offering your help on the Parochial Church Council. This is when the officers of the Council will be appointed, do join us there to hear of plans for the future of our church and have your say

It is indeed very strange not to have fund raising events on the horizon, particularly as the church is in such need of funds. Next year will hopefully be a very busy year for the Events Committee, but if you have any ideas do contact one of the churchwardens.

RIDE AND STRIDE September 12TH 2020- yes- we did it- various members of our congregation rose to the challenge- some walked and some cycled- it was a glorious day and even the hills seemed relatively easy with the sun shining and just a light breeze. I myself cycled 20 miles with Rachel, Peter and my two

Continued on Page 33

WILL YOU GIVE US YOUR VIEWS ON LIVING IN TOLPUDDLE TODAY?

With the backing of our Parish Council, and following agreement at the Village Meeting last Autumn, I am carrying out a community survey of Tolpuddle and Southover this Autumn to get views on what it is like to live here in 2020. I very much hope you will find the time to take part.

Some may remember that a similar survey was carried out around ten years ago. It led to some changes, including the registering of certain community assets (such as the pub), providing an opportunity for the community to compete to purchase if they were ever up for sale.

The results from the new Survey will be fed back to the village and drawn on by the Parish Council in discharging its responsibilities affecting Tolpuddle. They could also support representations to Dorset Council and others on issues affecting the village. If there is sufficient consensus on key matters, consideration may be given to drawing up a Community Plan, setting out residents' aspirations for the village over the next decade or so.

The Survey has been drawn up in consultation with a number of people in the village. It will ask for residents' views on a wide range of topics, such as access to public and other services, safety and security, housing and planning and the quality of our environment. So it is quite full and will take around 30-45 minutes to complete.

The aim is to distribute paper copies of the survey to each household in late October with two or three weeks to respond. (We are also exploring the option of completion online.) The results will be collated and a report prepared hopefully by early in the New Year

I do hope as many of you as possible will agree to take part. It's a chance to have your say about village life and help shape its future. Many thanks in anticipation.



grandsons – the latter of course who always seemed to be in the lead. We visited Bere Regis, Milborne St Andrew, Tolpuddle (three churches including The Old Chapel!) Athelhampton, Puddletown, Affpuddle, Turners Puddle and Bere Regis again! Yes we did realize that two of the churches are no longer consecrated but hey ho! Sadly some of the churches were not manned but we were delighted that Marion in Tolpuddle reminded us that there were refreshments outside the Old Mill. We yet have to collect our money in from generous sponsors but hope to have raised in excess of £600 for DHCT, half of which will come back to St John's.

HOT off the PRESS- there is to be a stall outside the Village Hall over the next few weeks, selling

homemade produce- in aid of the church- do come and support this and of course if you can offer any help please ring Marion on 07747 104591.

Meanwhile- stay safe and distant

Hilly and Julie



Mushrooms and toadstools

I love all the different mushrooms and toadstools that spring up in the meadows and woods around our villages in October. They play an important role in nature, helping to recycle nutrients from dead or decaying organic matter, and providing food and shelter for wildlife. Apparently, the UK is home to 15,000 different species of fungi and although there's no scientific difference between mushrooms and toadstools, most of us think of

mushrooms as fungi that are good to eat and toadstools as poisonous!

The classic fairy tale toadstool, probably our most recognisable species of fungus, is the fly agaric. It has a distinctive bright red cap (often with white spots) and a white stalk and typically growing beneath birch trees or pines and spruces.

Look out for them this autumn beneath birch and pine trees, but remember don't eat them, they are poisonous!



Sally Cooke



Prices from just
£15*
per treatment

Choose **GreenThumb** to bring your lawn to life...

We offer seasonal weed and feed treatments from just £15* that will keep your lawn looking lush, green and weed-free throughout the year.

We also provide beneficial treatments to keep your lawn in tip-top condition:

- ✓ Hollow-tine aeration
- ✓ Scarification
- ✓ Lawn disease management

For your FREE lawn analysis, call today: 0800 0111 222

E: dorchester@greenthumb.co.uk

GreenThumb
LAWN TREATMENT SERVICE



LOGS

Quality Seasoned Hardwood Logs

Small Load £80 and Large Load £175

Kindling and Coal Household/Smokeless

20kg Household £10.50

20kg Smokeless £13.00



Tel/Fax: 01258 837377

Mobile: 07971 276980

b.Beauty

Mobile Beauty Therapist

tel: 07826082343

email: b.Beauty@mail.com

facebook/instagram: [b.beauty.bekah](#)

Offering a range of Beauty services from the comfort of your own home!



Felling
Reductions
Pruning
Stump grinding
Hedges
Lawn maintenance
Turbing
Strimming
Garden fencing

Greenways Tree Care & Garden Services

(Fully Insured)



Tim Moore - 01258 837124
- 07968 154708

Free estimates and Advice
20 years experience

Dewlish, Dorchester
Chippings and Compost delivered

TOLPUDDLE VILLAGE HALL

NEWS

Registered Charity No. 257403



The constantly changing Covid rules represent quite a challenge in terms of running the Village Hall. The latest change - from Monday 14 September - means that no more than 6 people may gather for social occasions inside or out and this will obviously affect things like coffee mornings and Sunday afternoon community drinks.

However, the Hall remains open for any activity that is permissible under Government rules, restrictions and advice. The Committee have put in place various arrangements to mitigate infection risk, including separate entrance and exit, a one way system for the use of the WCs, hand sanitiser stations and foot operated bins. However, for safety reasons, kitchen facilities (eg cooker, crockery, glasses, cutlery etc) are not in use and those hiring the Hall are requested to wipe down any chairs, tables or other surfaces in use, before and after. The Hall is also cleaned thoroughly once a week with special emphasis on wiping surfaces that are likely to be touched.

It is primarily the responsibility of the hirer to be satisfied that the purpose for which they are hiring the Hall, and the number of people likely to be involved, are consistent with Government rules, restrictions and advice on measures to contain the coronavirus. Hirers will also need to ensure they obtain and maintain for 21 days a list of all those attending their events, in case track and trace is needed; and that attendees observe social distancing guidance.

Charges

In these difficult times, with the full facilities of the Hall unavailable, we have decided to reduce hourly charges for all users. Accordingly, while coronavirus restrictions remain, hourly rates will be as follows:

Activity	£ per hour or part
Community social gatherings, open to all (but note Rule of 6 now applies)	Free
Regular Classes, Groups with primarily community focus and where fees are charged	7.50
Hire for private events by villagers	5
Hire for private events by others	7.50
Commercial hire	15

ALEX FROST & JOHN BUTLER



MASTER THATCHERS

PROMPT ATTENTION
HELPFUL ADVICE

5 Streetway Lane
Cheselbourne, DT2 7NU
01258 837538

www.jbmasterthatcher.co.uk

DOMESTIC REPAIRS

WASHING
MACHINES

FRIDGES

DISHWASHERS

NO CALLOUT CHARGE

PROMPT

COMPETITIVE

SERVICE

7 DAYS A

WEEK

24 HOURS A DAY

TUMBLE
DRYERS

COOKERS

FREEZERS

Tel IAN COOMBS on
07572 918745

J.P.L Gardens

Professional Garden Services

- Lawn Mowing
- Hedge Cutting
- Garden Maintenance
- Garden Clearance
- Mole Catching
- Landscaping and fencing
- Small tree work

Call Jerry Legg

01258 489977

07940 895803

23 May Grove, Charlton Marshall,
jplegg48@googlemail.com

JASPERS

HAIR SALON

**Main Street
Piddletrenthide
01300 348 569**



Opening Times:

Tuesday:	9am-4pm
Wednesday:	9am-6pm
Thursday:	9am-5pm
Friday:	9am-7pm
Saturdays:	8.30-1.30

A modern Salon providing a
friendly and professional service

www.jasperssalon.moonfruit.com

Booking

We hope to move to an online booking system for the Hall in the near future. Until then, bookings may be made by texting/phoning Julie Batchelor (07866 678358) or Jo Austwick (01305 848137 or 07852 284857 - evenings only). Bookings will be confirmed by e-mail, normally within 24 hours, including hire terms and details of how to make any payment due.

100 Club

100 Club ticket sales and draws were suspended when lockdown was imposed, but we are now looking at restarting the scheme this Autumn. Watch out for news on this in the next few weeks. Just to remind you, there are in all 100 tickets (some already sold), each costing £10, and prizes of £15, £10 and £5 each month. The surplus goes towards Hall running costs, so it is a way of supporting the Hall with a chance of getting your money (and more) back!

So far this year, we have had only one draw (April). When we restart (October or November) we will catch up by holding all the outstanding draws (6 or 7 of them!) so there should be plenty of lucky winners.

Committee Changes

After many years as a Trustee, Diana Foreman, our longest serving member is stepping down. Diana has given sterling service to the Hall over the years and we will miss her counsel, but we hope we might be able to entice her back from time to time - for example, for quiz evenings.

For the record, the current Committee is as follows: Peter Walton (Chairman), Andy Turner (Treasurer), Jonathan van Baars (Secretary), Jo Austwick, Julie Batchelor, Nick Batchelor, Liz Gould, Penny Ruddock and Margaret Walton. Needless to say, we are always on the look out for new members!

Peter Walton

Chairman

Tolpuddle Coffee Mornings

Calling all villagers!!

CANCELLED.

We are now holding the Tuesday coffee morning in the village hall at 11 am. We bring our own drinks and cups as the kitchen is closed. If the weather is fine we can sit outside otherwise we sit inside social distancing from each other. Come and join us if you are feeling bored with the lockdown and feel like a chat.

Liz Gould





BINDON ABBEY SCAFFOLDING

WOOL - WAREHAM

Reliable service and competitive pricing

T: 07501 465192

Email: bindonabbeyscaffolding@outlook.com



ockalty

Professional Animal Services

Qualified veterinary nurse with
qualifications in agriculture

Offers you a bespoke pet
service tailored to meet all your
individual needs

Dog walking	Daily cat visits
Dog day care	Equine
Boarding	Small holdings
Home visits	

Other services offered

Contact Gill 07791 567944

Email info@ockalty.co.uk

Website www.ockalty.co.uk

Ernest G Hart Ltd

marquee and event hire specialists

Supplying fine marquees since 1944



*For expert advice and friendly service
please ring us on*

01258 881047

www.ernestghart.co.uk

Unit 1, Milborne Business Centre, Blandford Hill
Milborne St Andrew, DT11 0HZ

Places of Pilgrimage (Dorset) – A saint, a mermaid and a lost dedication

This church is open daily between 10 a.m. and 4 p.m. even during the Covid regulations and follows safe guidelines.

Location: The church can be reached by car on A352; only 2 miles from Dorchester at Whitcombe DT2 8NY (SY716883 N50.693692 W2.403401). Parking is possible opposite the church in a lay-by. (Be careful of the main road). However, if winter weather permits a short 30 min 'flat walk' is



recommended across the fields from West Knighton. This provides the opportunity to look inside the beautiful St Peter's (open Wed 2-5 p.m. and Sun 9-12 noon). Two settings in one day out! If undertaking the walk park outside West Knighton Church (SY732876 N50.687764 W2.3805002). Turn left out of the church gate and as you reach a left hand bend in the road there is a signed footpath on the right. Take this path (The Jubilee Trail) down a gently slope and through a field. At the bottom of the field walk through the hedgerow and turn immediate left under a pylon onto the Bridleway. Following the hedge and bridleway to the end of three fields after which the path cuts through the hedgerow on the left into another field. Follow this bridleway until you meet a 'crossroads'. Go straight over onto a footpath (which is much narrower) and follow the hedgerow. Continue until you literally meet a 'foot'path sign pointing right. Follow this past the stable building on the right and continue on this footpath through metal gates until you see a footpath on the left. Take this out onto the main road (turning left 150 metres along the grass verge is the church gate). Afterwards retrace your steps back to St Peter's.



What to look for: This unique church is 12th century Grade I listed, dating back to King Athelstan (AD966). It was granted part of the endowment to Milton Abbey. The nave dates from the 12th century, the chancel 15th and the tower added in the 16th century. The 13th century Purbeck marble font, which is octagonal is situated at the back (squeezed between the wall and tower).



A FAMILY FRIENDLY TRADITIONAL VILLAGE PUB IN MILBORNE ST. ANDREW

What's on in October

**CARVERY EVERY
FRIDAY & SUNDAY**



Thursday 8th

Italian Theme night

£10.95 per head



Thursday 29th

Pie Night

£10.95 per head

**12 noon
to 2.30pm**

£8.95 (Friday only)

From 6.00pm

£10.95

Smaller appetite

£8.95

Children

£5.95

All day Sunday

£10.95

Booking recommended

Dorchester Hill, Milborne St. Andrew, Dorset DT11 0JG

Visit www.theroyaloakmilborne.co.uk

or for enquiries email hello@theroyaloakmilborne.co.uk

**TO BOOK CALL
01258 837248**

The tower area itself contains a Jacobean pulpit.

However this church is most memorable for its walls with a medieval rood stair still evident and most strikingly a series of medieval paintings including St Christopher carrying Christ on his shoulders and a mermaid combing her hair. These unique paintings date between 1425 –1450 and were hidden under paint for centuries until restoration on the church began in 1912. The reason for the mermaid remains a mystery.

The poet William Barnes (1801-1866) has a memorial stone in the church although he is buried at Winterborne Came. He was a friend of Thomas Hardy and was borne near Sturminster. Assisted by his wife Julia (who died in 1853), he ran schools in Mere and Dorchester (Dungate Street and South Street). He was ordained at St John's College Cambridge in 1847 and became rector of Winterborne Came. He is reputed to have mastered SIXTY living and dead languages and wrote many poems of life in Dorset. His most famous work is 'My Orcha'd In Linden Lea', written in the Dorset dialect.

Other places to visit: The pub at West Knighton is recommended or one can return to Dorchester where many cafes and hosteleries are open.

Historic Churches Trust Donations for this specific church To donate £1, text WHI to 70201 To donate £3, text WHI to 70331 To donate £5, text WHI to 70970 To donate £10, text WHI to 70191

Jane Pridmore

'Ithin the woodlands, flow'ry gleaded,
By the woak tree's mossy moot,
The sheenen grass-bleades, timber-
sheaded,
Now do quiver under voot;
An' birds do whistle over head,
An' water's bubblen in its bed,
An' there vor me the apple tree
Do lean down low in Linden Lea.
When leaves that leately wer a-springen
Now do feade 'ithin the copse,
An' painted birds do hush their zingen
Up upon the timber's tops;
An' brown-leav'd fruit's a-turnen red,
In cloudless zunsheen, over head,
Wi' fruit vor me, the apple tree
Do lean down low in Linden Lea.
Let other vo'k meake money vaster
In the air o' dark-room'd towns,
I don't dread a peevish measter;
Though noo man do heed my frowns,
I be free to goo abroad,
Or teake agean my hwomeward road
To where, vor me, the apple tree
Do lean down low in Linden Lea.

WOODS FUNERAL SERVICES

Providing a caring service since 1878

Independent Funeral Directors

Memorial Specialist

24 Hour Personal Service

Prepaid Funeral Plans

Pauline J Guy Dip FD MBIFD

Allan Quartermaine Dip FD LMBIFD



Visit us at: 11A Icen Way, Dorchester, Dorset, DT1 1EW

Call us on: 01305 250425 Fax: 01305 250625

Email: enquiries@woodsfuneralservices.co.uk

Website: www.woodsfuneralservices.co.uk



GARY SPRATT

GARDENS AND WOODLANDS RESTORATION AND MAINTENANCE

EXPERIENCED. QUALIFIED. INSURED.

FRIENDLY RELIABLE SERVICE BY COMPETENT PLANTSMAN.

Careful and correct pruning of all trees, shrubs, roses and climbers.

Skilled training and tying of wall shrubs, roses and wisterias.

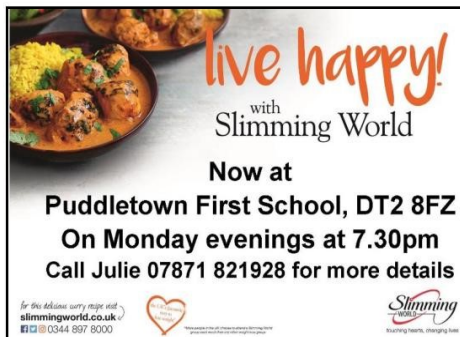
Professional tending of herbaceous borders.

Hedgelaying, pleaching, hedge cutting and renovation.

Coppicing and woodland management.

Wildlife habitat conservation.

Phone: 01258 837927. Mobile 07929 832244



live happy!
with
Slimming World
Now at
Puddletown First School, DT2 8FZ
On Monday evenings at 7.30pm
Call Julie 07871 821928 for more details

for this advice sorry miss and
slimmingworld.co.uk
0344 897 8000

Slimming World
Inspiring hearts, changing lives

Struggling with Anxiety or Depression

Relationships

Grief and loneliness?

Phone 0774 702 4880

**for professional, affordable face to face individual
or couple counselling locally**





Milborne Ladybirds Playgroup

All Change

When writing this Ladybirds have been back a week and we are all adjusting to the new normal. Antonia has a beautiful baby girl and her role as Deputy has been filled by Alex who we welcome to our team. Emily has left to take up an SEN role at school and we will miss her greatly although she may be popping in occasionally. Luckily Meg is still with us along with myself who has put off retirement for a few more years. Jess is volunteering so our small team of dedicated staff is now complete.

We had a lovely morning with just our leavers. Providing an opportunity to meet with their friends who they will go to school with and say goodbye to Ladybirds. At the end we held a socially distanced picnic on the field and the children competed in sack, egg and spoon and 3 legged races. There was also a family race which provided laughs and was quite competitive.

We have tried to keep the ladybird mornings as much as possible the same as before to help children coming back. With children not having been in for 6 months and many new starters the first few days were quite a challenge. Parents are no longer allowed in the Hall but can come into the outside area to help settle their child if needed. For some young children it is scary having been at home with family for such a large portion of their lives. We have concentrated on playing – well no change there! Less toys are out as they need cleaning afterwards and although we prefer natural materials plastic wipeable resources are necessary.

By the end of the week the children are chatty and happily playing with their friend old and new. Physical play is always popular and when there's not enough room in the spinner just turn the stepping stones over and use them. What great resourceful children they are.



Liz Dyer (Leader)

01258 839117 or 07771 512427

Kelly Haggett (Secretary)

secretary@milborneladybirds.com

www.milborneladybirds.org.uk



Stockley Builders Ltd

**General Build &
Maintenance**

Tel: 01305 854500

**office@stockleybuilders.co.uk
www.stockleybuilders.co.uk**

JK TILING & DECORATING

Ceramic & natural stone walls & floors

Painting Interior & exterior

Wall paper hanging & coving

Public & commercial work undertaken

Fully Insured

Call Jason for a free estimate or advice

Mob 07796 142713 or Tel 01305 781064

Philip Trim Contractors

ULTIMATE LIQUID & SLURRY SOLUTIONS

**Liquid Waste Disposal
Emptying of septic tanks,
cesspools, gullies, interceptors,
grease traps, event & festival hire**

Local professional service

www.philiptrimcontractors.com

info@philiptrimcontractors.com

**Chamberlaynes Farm Workshop
Bere Regis Wareham BH20 7LS**

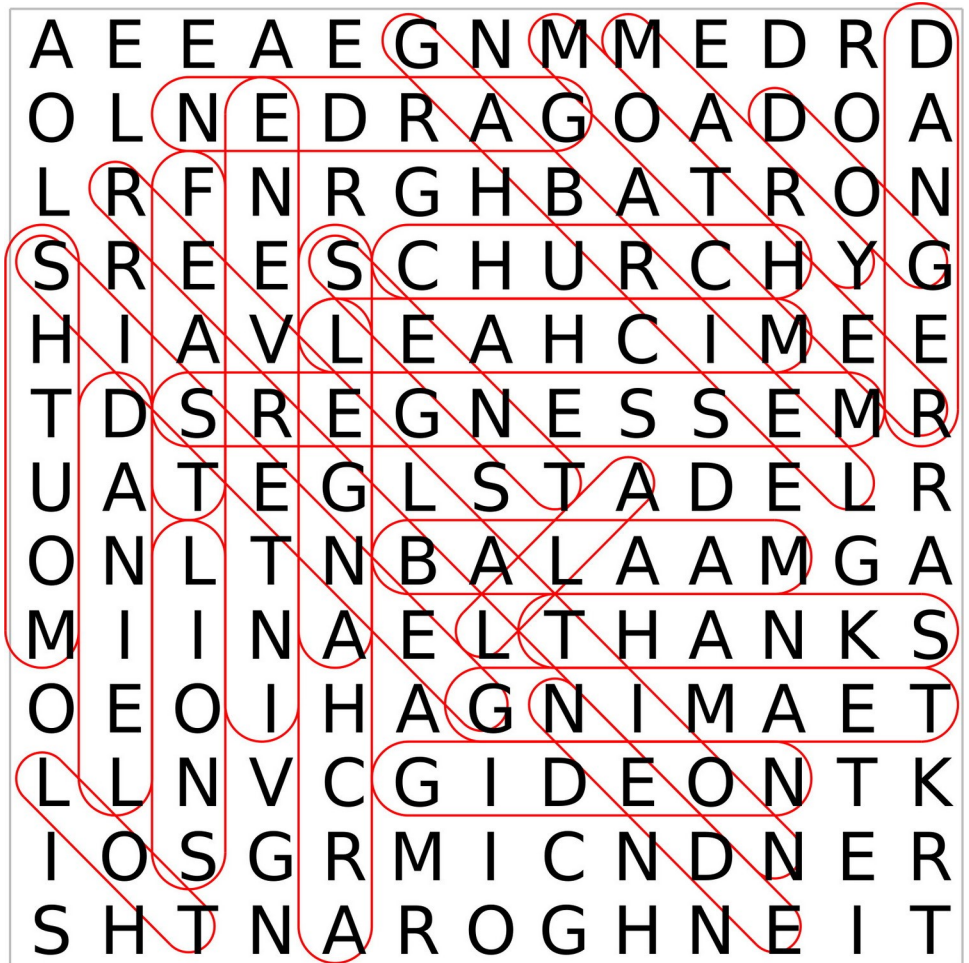


**RING NOW FOR DETAILS
01929 472192
07971 005579**

September Wordsearch—the answers

You were looking for the following words:-

Thanks, Angels, Church, Feast, Michael, All, Genesis, Messengers, God, Sent, Intervene, Garden, Eden, Lot, Gideon, Balaam, Mouths, Lions, Daniel, Archangel, Gabriel, Mary, Mother, Teaming, Revelation, Danger.



Martyr Merchants

Specialists in;
Timber - Fixings - Hardware

Small Local Independent Builders Merchants

Suppling a wide range of building materials.
Call us now to discuss any projects large or small.
We are a friendly, helpful and experienced team,
that tailor our quotes to each customers design
and specification.

Call Now for a Price
inc, Free Delivery*

Phone: 01305 848540

sales@martyrmerchants.co.uk



Martyr
Group

Martyr Joinery

Bespoke Joinery & Construction

t 07792 640534

www.martyrjoinery.co.uk

- Handmade Kitchens
- Windows & Doors
- Conservatories
- Fitted Units & Furniture
- Oak Framing
- Timber Buildings
- Refurbs & Extensions
- Stable Blocks/Barns
- Gates & Fencing
- Vehicle Fit-Outs
- Custom Projects

All Aspects of Woodwork



Martyr
Group

Milborne St Andrews Church News

Things have gone back to normal – well the new normal anyway. We were delighted to host 3 services in St Andrew's church during August. It did mean a lot of planning and organisation but it was worth it. The positives were that we were able to meet together for worship again and to see people that we had not seen for a long time from our parish and from the benefice.

The communion services are nearly the same but not quite. In order for us to meet to worship there have to be many things that are different. Masks are required to be worn (unless exemption applies), all who come have to leave their names and contact details (Test and Trace) and social distancing is enforced (unless in a 'bubble'). Although we are not allowed to sing, we are able to listen to some hymns whilst reflecting on the words which are printed in the disposable service sheets. We can only share the Peace from our seats, verbally but not by touch. Nor can we go to the rail to receive communion but the host is brought to communicants in their seats. These measures are to be the new normal for as long as the pandemic is still a threat.

From September the pattern of our service will be slightly different. We will still have the Celebrate Services on the first Sunday of the month, however, we are not able to provide food or drink. Although we usually sit café style for the 'relaxed' service, we will have to sit in the pews – socially distanced of course. And of course, to adhere to the other recommendations to keep us all safe. There will still be communion services on the second and fourth Sundays. On the third Sunday of the month we will be introducing a reflective service instead of the 1661 Said Morning Prayers; this is called Worship in Stillness and will do exactly as it says, a service of reflection, prayer and listening.

We welcome regulars, new worshippers and visitors so do come along and join us. Information about times and dates are on posters, in the churches notice boards, and on the 'Benefice of Puddletown, Tolpuddle & Milborne St Andrew with Dewlish' Facebook page.

Pam Shultz

St Andrew's Churchwarden

Not the Dorset County Show

"The nearest I'm going to get this year to the Dorset County Show". This was a comment made to helpers at Milborne's Marvellous Mini Market held on the grass by the Village Hall on Bank Holiday Monday. For the last few years the Events Committee of St Andrew's church has organised a series of talks, meals, cream teas and other happenings, some of which have become annual events. Not this year, alas! The dreaded Covid-19 virus meant that most of the plans have had to be ditched, or at least postponed. It takes a lot to thwart us!

Continued on Page 49



Your home is where you feel the most comfortable and the happiest.

It's the place you know the best. Why would you move away from the place you love if you are faced with needing some extra care and support when you age? If you want to stay living comfortably at home, we can help you make that choice an informed one.

Our **care**

- ✓ Home help
- ✓ Personal care
- ✓ Companionship
- ✓ Dementia care

Home Instead Dorchester 31 High West Street, Dorchester, Dorset DT1 1UP

Tel: 01305 239289 homeinstead.co.uk/dorchester

Each Home Instead Senior Care® franchise office is independently owned and operated. Copyright © Home Instead 2019.

With no chance of holding the long-standing Four Churches Day – it takes months of work to organize something on that scale – but with lockdown conditions easing a little we decided to create a micro version.

So Bank Holiday Monday saw us yet again packing cars to the gunnels (sic), wrestling with gazebos, carting tables, chairs, crates of this, that and the other and getting grass stains on the knees of our trousers as we erected the Marvellous Market on the grass outside the Village Hall. We had no idea how many people would come; if **anyone** would come. Refreshments over-catered extravagantly and there are enough chocolate bars and soft drinks bottles in my Map Room (aka the office, aka the little bedroom – it's where I keep all my maps) to sink a battleship. The cake stall was as popular as ever – who can resist home-made raspberry muffins and apple pies? There was Bric a Brac, Pre-loved Clothes, games with prizes for the younger visitors. There was Tombola – win a prize every time, the Raffle with patchwork quilt, chocolates and cream teas among the prizes. You could buy plants and fresh produce straight from the garden, jams and chutneys.

Enough people came to make us feel that arranging it was worth the effort but not so many that people felt unsafe in crowds. No, it wasn't the Dorset County Show, but by the time we had cleared the field, packed and then unloaded the cars we felt we had had a good day and deserved the cup of tea/glass of wine/large gin – delete as appropriate.

Rose Johnson

St Andrew's Events Committee

Is your face mask making your skin break out?

Face masks are giving us skin complaints. In fact, so many of us are now suffering that the complaint has been given its own name: 'maskne'.

The causes are obvious. Our breath is warm and moist, and every time we exhale into our masks this humid air gets trapped. Masks move, and so we have friction. Added to that is the unpleasant fact that our saliva is actually teeming with bacteria (with more bugs per square inch than even a loo seat!).

Acne mechanica is the medical term for 'maskne'. With all that bacteria being trapped and rubbed against our nose and chin, no wonder 'mask breakouts' are rising dramatically.

Stress is another cause for skin complaints, and the pandemic has given many of us huge stress this year. We may face crippling anxiety over job security, finances, the health of loved ones, social isolation, or even being trapped in an abusive household. No wonder our faces are breaking out in a rash!

Courtesy of Parish Pump



Forum Ear Care
Mobile ear irrigation
£25 – fully qualified,
experienced and insured
nurse.
07562199815

**Wills, Probate, Powers of Attorney
Appointments in your own home**

Single Will £125

Single LPA £150

Email: enquiries@winterbornelegal.co.uk

Mobile: 07860 772274

**Advice, guidance and assistance
from a local solicitor**

**Free initial telephone consultation
Evening and weekend appointments
available**

Making life easier for you

Winterborne Legal Services Limited

We are here for you.



Twitter @CarersDorset



Facebook/CarerSupportDorset

Call us free on 0800 368 8349



Join our free **Virtual Cuppas** - alternate Wednesdays, 2pm-3pm

Register for our **Here to Talk** service by calling us FREE on
0800 368 8349 (Mon - Thurs 9.30am-4.30pm, Friday 9.30am-4pm).

Go to our website www.carersupportdorset.co.uk to find more
information, advice and resources.

October's Wordsearch

All Hallows Eve – or Holy Evening

Modern Halloween celebrations have their roots in pre-Christian times. In those long-ago days, on the last night of October, the Druid priests celebrated the Festival of Samhain, or 'Summer's End'. They lit great bonfires and performed magic rites to ward off the dark supernatural powers of oncoming winter. Today, Christians turn to prayer instead of charms to overcome the powers of darkness. And the deeper, true meaning of All Hallows' Eve, should not be forgotten. As Christians, we all draw closer to Christ when we remember and give thanks for our loved ones and for others who have gone before us through the gates of death. 25 words to find in the grid below.





**Carer Support
Dorset**

VOLUNTEERS NEEDED!



Interested in joining us as a Here to Talk volunteer?

Call us on **01380 819626** or email
admin@carersupportdorset.co.uk

WWW.CARERSUPPORTDORSET.CO.UK

- Offering a regular, informal chat with unpaid carers to help reduce isolation and loneliness.
- Full training provided.

WOULD YOU LIKE TO HELP OTHER FAMILIES IN WEST DORSET?



Home-Start West Dorset

Do you have parenting experience and 2-3 hours a week available to visit a local family in need? Home-Start West Dorset is looking for volunteers to offer practical and emotional support to families with children under five.

Families require help for many different reasons, including loneliness and isolation, multiple births, poor mental health, illness or disability, housing or financial stresses; or maybe they are just finding parenting a struggle. Covid 19 has also meant many families in Dorset have been finding life particularly hard for the last few months.

Home-Start West Dorset is a well-known local independent charity that has operated across West Dorset, Weymouth, Portland and Sherborne since 2009. All volunteers undertake a 26-hour training course, spread over multiple weeks, which gives them all skills and tools they'll need. Once matched with a suitable family, our volunteers continue to be fully supported, including a personal supervision every six weeks.

During this time of social distancing the charity has successfully moved its support to on line; still giving weekly support through phone and video call, texts and post. Kelly Rolfe, one of the charity's organisers says, "As lockdown guidelines have eased, many more families have been pushed towards a vulnerable status and we're getting increasing amounts of referrals. We are aiming to organise a new volunteer training course as soon as it is safe to do so, and are looking for women and men with parenting experience, aged 18 and over, to apply now so that we can get going again as soon as possible."

For more information or an application form please contact us on 01305 265072 or email office@homestartwestdorset.co.uk

Do you have holiday accommodation in Tolpuddle?

We are adding an additional page to the village website (www.tolpuddlevillage.co.uk) as this is a busy holiday area with little accommodation available.

It is hoped that this will bring more business to the local area and enable more holidaymakers to enjoy our beautiful countryside.

Please email Tolpuddlemeeting@yahoo.com if you have any comments or suggestions.

Tulia Johnstone

Now in **South Dorset**

Super Healthy Premium Swedish Pet Food



For your Free Pet Assessment & Free Sample

Call/Email **Simon**, Husse Pet Nutritionist

07814 896541 | simon.pope@husse.co.uk

Husse South Dorset

www.husse.co.uk



Services in the Benefice – October 2020

4th October – Harvest Festival/Trinity 17

Psalm 65, Deuteronomy 26.1-11, John 2.1-11

9.30am	Harvest Festival	Tolpuddle
9.30am	Celebrate.....	Milborne St Andrew
11.00am	Harvest Festival Parish Communion followed by APCM	Puddletown
11.00am	Harvest Festival	Dewlish

11th October – Trinity 18

Psalm 23, Isaiah 25.1-9, Matthew 22.1-14

9.30am	United Methodist Service	Tolpuddle
9.30am	Worship in Stillness *NEW	Milborne St Andrew
11.00am	Puddletown Praise	Puddletown Church
11.00am	Parish Communion	Dewlish

18th October – St Luke

Psalm 147.1-7, Isaiah 35.3-6, Luke 10.1-9

9.30am	Parish Communion	Tolpuddle
9.30am	1662 Morning Prayer	Milborne St Andrew
11.00am	Parish Communion	Puddletown
11.00am	Family Service	Dewlish

25th October – Bible Sunday

Psalm 119.9-16, Nehemiah 8.1-12, Matthew 24.30-35

9.30am	Go Fourth	Tolpuddle
9.30am	Parish Communion	Milborne St Andrew
11.00am	1662 Morning Prayer	Puddletown
11.00am	Parish Communion	Dewlish

PRIVATE PRAYER

Puddletown, Tolpuddle and Dewlish churches are open for private prayer every Wednesday and Friday.

Milborne St Andrew is open every day.

Londis

R. & O. Ball & Son

Welcome
to Londis Puddletown
Health Lottery
National Lottery
Milk and Dairy
News and Mags
Chilled Beers and Wines
Fruit and Veg
Cash Machine
Mobile Top Up
Instore Butchery
Homemade Pies
Crisps and Snacks
Sweets and Chocolates
Dry Cleaning
Shoe Repairs
Photocopying
Many other services—Just ask!

Londis Stores
High Street
Puddletown

Tel: 01305 848235

Shop Opening Hours

Monday to Saturday
7.00am to 8.00pm

Sunday
8.00am to 8.00pm



Also at
65 High West Street
Dorchester
01305 260738
(next to County Museum)

Shop Opening Hours

Monday to Saturday
6.30am to 9.00pm

Sunday
7.30am to 9.00pm

POST
OFFICE

Puddletown

Post Office ~ Puddletown

Telephone: 01305 849526

Free banking for most bank accounts.

Monday to Friday, 9.00am to 5.00pm

(Closed 1.00pm to 2.00pm)

Wednesday and Saturday, 9.00am to 12 noon