

Parish Magazine

Serving the Church Communities of Puddletown, Tolpuddle, Milborne St Andrew
and Dewlish

DECEMBER 2023

£1



BURROW



Wastewater Treatment Plant Installations for Owners of Septic Tanks

Septic Tank Owner?

New laws mean that you may need to update your system to a wastewater treatment plant to stop your septic tank polluting the environment.

Please contact us to arrange a free assessment visit.

01935 507 508

burrow-environmental.com



hklaw

We're there when it matters

When going through a relationship breakdown, we will help you understand your options to make informed decisions.

- Divorce
- Financial Settlements
- Child Custody
- Cohabitation Agreements
- Prenuptial Agreements

hklaw.uk

A Dorchester T 01305 251007
E dorchester@hklaw.uk

Contact Details		
Editor	The Revd Sarah Hillman	puddletownparishmagazine@gmail.com
Advertising Manager	Pam Fleetwood	puddletownparishmagads@gmail.com
Dewlish Editor	Geoff Bull	01258 837 316
Milborne Editor	John Wright	01258 839 090 johnaben23@icloud.com
Puddletown Editor	Emma Hughes	puddletownparishmagazine@gmail.com
Tolpuddle Editor	Marion Bishop	01305 848 427 tolpuddleparishmagazine@gmail.com
Distribution Co-ordinator	Jan O'Mara	01305 848 551
Tolpuddle Distribution	Liz Gould	01305 848 464

Annual Advertising Rates to end December 2023 (Sizes are cm)		
Eighth Page - (6.00 x 4.40)	£53.00	Half Page - (12.26 x 9.00) - £143.00
Quarter Page - (6.00 x 9.00)(P) (12.26 x 4.20)(L)	£78.00	Whole Page - (12.26 x 18.25) - £195.00

The Editor's decision is final. All items for publication must include name and contact number of the author. Opinions expressed are not necessarily those of the church or the magazine. Advertisers are neither vetted nor endorsed by the Parish Magazine.

Please mention the Puddletown Parish Magazine when responding to advertisers. For magazines by post contact the Distributors as shown above.

Published by the Parish Magazine, St Mary's Church, The Square, Puddletown, Dorchester DT2 8SL.

Copy deadline for the January magazine is 30th November 2023

Front Cover Photos: Part of the Christmas village window display in The Antique Map & Bookshop in Puddletown.

*Handcrafted Soap, Skin Care,
Haircare & Dog Soap
made in rural Tolpuddle*



*Made using quality natural ingredients
Plastic free packaging*

All recipes certified by a cosmetic chemist

Handcrafted Soaps Shampoo & Conditioner Bars
Himalayan Pink Salt Bath Soaks Shaving Soaps
Body Scrubs Lip Balms
Hand & Body Creams Scented & Unscented Dog Soaps

At home parties on request please email for availability

hello@pidelahouse.co.uk

www.pidelahouse.co.uk



Rosemary's Cards

EXCEPTIONAL QUALITY
BEAUTIFUL CARDS, GIFT WRAP AND CRAFT KITS

Quality stationery items for up to 50% less
than high street prices.

ROSEMARY BUCK
3 HIGH STREET, PUDDLETOWN
DORSET DT2 8RT

Tel: 01305 848575

Email: rbuck88.rb@gmail.com

WOODS FUNERAL SERVICES

Award winning care and service since 1878



Independent Funeral Directors

- *Memorial Specialist*
- *24 Hour Personal Service*
- *Prepaid Funeral Plans*



Pauline J Guy Funeral Director, Dip FD, MBIFD

Becci Wiles Funeral Director



Visit us at: 11a Icen Way, Dorchester, Dorset, DT1 1EW

Call us on: 01305 250425 Fax: 01305 250625

Email: enquiries@woodsfuneralservices.co.uk

Website: www.woodsfuneralservices.co.uk



Away in a manger

Away in a manger, no crib for a bed,
the little Lord Jesus laid down his sweet head;
the stars in the bright sky looked down where he lay,
the little Lord Jesus asleep on the hay.

The cattle are lowing, the baby awakes,
but little Lord Jesus, no crying he makes.
I love thee, Lord Jesus, look down from the sky
and stay by my side until morning is nigh.

Be near me, Lord Jesus; I ask thee to stay
close by me for ever, and love me, I pray.
Bless all the dear children in thy tender care,
and fit us for heaven, to live with thee there.

This is one of the most well known Christmas carols that will be sung in church, in schools, in concert halls and around the streets this Christmas. Children learn it at a young age, and it's the one carol they can sing and join in with when still quite small (in addition perhaps to Little Donkey!)

Carols sum up so well the sense and meaning of Christmas in the word-pictures they paint. Some of these images need taking with a pinch of salt – I'm sure baby Jesus **did** cry unlike the carol suggests. But carols have within them much truth as well.

“Be near me, Lord Jesus” – the heart of Christmas is about just that: Jesus coming to be near us, staying alongside us and loving us. Whatever life throws at us, Jesus walks with us. We are never alone with his presence beside us.

Christmas can be a time of real pressure, especially as the cost-of-living crisis isn't easing up yet, but this is the world God chose to make his home. Enjoyable as they are, the things we spend money on aren't necessary to sustain the true meaning of Christmas: that God came from heaven to live among us on earth, to show us what love looks like.

Love can be costly, but it doesn't take pounds and pennies to create it. It's something we can all be a part of. God's love comes to us wherever we are; it can fill a broken heart, ease the pain of loneliness, heal our inner wounds and give us hope for the future because no situation is ever too much for God to cope with, if we ask for help.

This Christmas, in the midst of all the festivities, why not take a moment to stop and pray the words of this carol – be near me, Lord Jesus. Whatever situation you find yourself in, wherever you are, it is a prayer that will be answered.

I wish you all a peaceful Advent and a Happy Christmas to you, *Sarah*

read woodruff
chartered accountants



**Practical accountancy and
taxation advice
free initial consultation**

**www.readwoodruff.com
online information and advice**

24 Cornwall Road DORCHESTER Dorset DT1 1RX
Telephone 01305 265544
e-mail advice@readwoodruff.com



Clox On Time

69 Monmouth Road
Dorchester. DT1 2DE
01305 250442
www.cloxontime.co.uk

Clox On Time is a family run

business carrying out servicing, repairs and restoration to all types of clocks and time pieces. We sell a varied selection of clocks and watches. We are stockiest for Royal London, Lorus (made by Seiko) and Limit. We have a small selection of Timex & Cannibal watches. Batteries and straps fitted, usually while you wait. Feel free to ring Graham or Debbie for any advise or estimates. Please mention the magazine.



THE PUDDLETOWN BENEFICE

INVITES YOU TO A

CREATIVE

ADVENT COURSE



Come and make some **grown-up Christmas crafts**, enjoy a simple **bread-and-cheese lunch** and chat to friends



old and new.



Take time out to relax and connect with the meaning of Advent in a creative way through crafts and a short reflection on the themes of

Hope, Peace, Joy and Love

FOUR THURSDAY LUNCHTIMES AT 12.30pm

STARTING ON THURSDAY 30th NOVEMBER

IN PUDDLETOWN CHURCH ROOM

To book your place, contact Margaret Rickard

margaretmary227@gmail.com

01305 849332

If you wish, you are welcome to bring your own crafts and enjoy the company



TAYLORS ACCOUNTANTS

Chartered Accountants in Puddletown.

High quality accountancy delivered
with a personal touch.

For all your accounts and tax
requirements.

Contact us for competitive fixed price
work, undertaken for a full range of
services, including self assessment,
VAT, payroll and company accounts.

01305 848779

www.taylorsaccountants.co.uk



JASPERS HAIR SALON



*Your friendly local salon
providing exceptional results*

Check out our new website-
www.jaspershairsalon.co.uk

OPENING TIMES

Tuesday: 9.00am-4.00pm
Wednesday: 9.00am-6.00pm
Thursday: 9.00am-5.00pm
Friday: 9.00am-7.00pm
Saturday: 8.30am-1.30pm

**Don't forget to ask about our Loyalty
cards and special offers**

01300 348 569

Main Street, Piddletrenthide, DT2 7QL

ALEX FROST & JOHN BUTLER MASTER THATCHERS



PROMPT ATTENTION
HELPFUL ADVICE

5 Streetway Lane
Cheselbourne, DT2 7NU
01258 837538

www.jbmasterthatcher.co.uk

DOMESTIC REPAIRS

WASHING
MACHINES
FRIDGES
DISHWASHERS

NO CALLOUT CHARGE
PROMPT
COMPETITIVE
SERVICE
7 DAYS A
WEEK
24 HOURS A DAY

TUMBLE
DRYERS
COOKERS
FREEZERS

Tel IAN COOMBS on
07572 918745

St. Mary's Church Events - December



Pop-in Coffee Mornings in the Church Room are every Thursday from 10am to 12noon. Everyone (of any age) is welcome. Good coffee and delicious cakes and/or biscuits are always on offer. Come and join us for a sociable hour or two.

Warm Space This continues every Wednesday from 10am to 3pm in the Church room

Prayer Group This continues to meet in the church room on Tuesday mornings from 10.30 until 11.30am. All are welcome.

Craft Group this continues on Thursdays November 30th and December 7th, 14th and 21st from 12.30. Please bring your own scissors. If you would like to book your place then please contact Margaret margaretmary227@gmail.com or 01305 849332

Christmas Lunch will be on Wednesday 13th December from 12noon. We shall be serving roast turkey with all the trimmings followed by Christmas pudding or trifle. A vegetarian dish will also be served. This must be booked in advance. If you haven't yet booked your place then please contact Sheila on 849193 or Jean on 848211.

Christmas Fair this will be on Saturday 9th December from 10am to 12noon in the Village Hall. More details available further in the magazine.

Christmas Services there will be a church service to suit everyone. More details further in the magazine.

Sixties song and dance evening this took place on November 3rd in the village hall. Our Puddletown ukulele group entertained us with music from the sixties and seventies and a few brave souls got up and danced. We enjoyed an excellent ploughman's supper followed by a raffle and went home having had a most enjoyable evening.

BENEFICE REGISTERS

Marriages

7th October Daniel Robertson and Sophy Davies Puddletown

4th November Geordie Keelan and Lisi Christofferson Puddletown

elite
FOOTCARE
Dorset

Susannah DuValle SAC DIP RFHP

**mobile
foot health
practitioner**

**Do you suffer
discomfort from:**

Nail Cutting
(including diabetic feet)

Corns

Callus

Athletes Foot

Ingrowing Toe Nails

Thickened Nails

Fungal Nails

Cracked Heels

Hard Skin Removal

Verruca

**Book your home
appointment
TODAY!**

07795 977648
susannah@elitefootcare.co.uk



St Mary's Puddletown		
Intercessors		Scripture Readers
3rd Dec	Cynthia Metcalfe	Paul Fleetwood
10th Dec	Puddletown Praise Team	
17th Dec	TBA	TBA
24th Dec	TBA	TBA
Midnight	Bob Todd	Rosie Hallett
25th Dec	Dawn Loveless	TBA
31st Dec	Cynthia Metcalfe	Judy Bumby
Charitable Giving 2023		
Lent		Toilet Twinning
Mothering Sunday		Women's Refuge
Easter Day		The Salvation Army (Homeless)
Harvest		Water Aid
Christmas		The Children's Society

Puddletown Community Library 200 Hundred Club Winners

2023	1st (£40)	2nd (£20)	3rd (£10)
September	T. Dennis (62)	Jean Jeffreys (21)	Anne Richards (54)
October	Marie Fisher (10)	Emma Hughes (75)	David Sanders (141)

Thank you to all those who helped decorate the Village Hall this year, we couldn't have managed without you - especially the tall ones !!

From 'Some locals'



JURASSIC COMPUTERS

*The incredibly friendly
computer people*



Call Darrell Hounsome or Lee Thompson for jargon free, patient, friendly computer help for home and business users.

Whatever your computer problem, call us... we can help!

01305 755668

Repairs • Servicing • New PCs & Laptops • Training • Virus Removal

Are you ready for a new PC or Laptop? If so, come and see us. We offer a complete service and will guide you through the whole process. We can supply, update, set-up and then transfer your documents/emails from your old system. We will give you the benefit of our combined 37 years experience gained whilst working for Kingston Maurward College in Dorchester.

Email: info@jurassic-computers.co.uk ~ Website: www.jurassic-computers.co.uk
PROSPECT HOUSE, PEVERELL AVENUE EAST, POUNDBURY, DORCHESTER, DORSET DT1 3WE

PURBECKAERIALS.COM

SAME DAY SERVICE **SKY WIFI** **OAP DISCOUNT**

TV- AERIALS

SATELLITE

FRESAT

CALL 07568456962

JOSH 01929553705

WIFI HOME HELP



Stockley Builders Ltd
General Build & Maintenance

Tel: 01305 854500

office@stockleybuilders.co.uk
www.stockleybuilders.co.uk

Stitchinghouse Design

Curtains & Interior Design

Beautiful Fabrics

Blinds

Interior design showroom
workshop direct prices

Monday ~ Friday 9 – 4
Saturday 9-12

3 Pummery Square, Poundbury,

01305 250782

www.stitchinghouse.co.uk



**ST MARY'S CHURCH
CHRISTMAS FAIR
&
COFFEE MORNING**

SATURDAY 9TH DECEMBER

10AM - 12NOON

PUDDLETOWN VILLAGE HALL

ENTRANCE £2

TO INCLUDE COFFEE & BISCUITS

**HOMEMADE CAKES, CHRISTMAS WREATHS
CHURCH MOUSE CARDS & PUDDLE DUCKS APRONS**

CRAFT STALLS INCLUDING

ROSEMARY'S CARDS

THE BODY SHOP

WORKS BY LOCAL ARTISTS

TOMBOLA, RAFFLE, GAMES

LIVE MUSIC BY

PUDDLETOWN UKULELE GROUP



Hustings Electrical Ltd

New Services - Traditional Values

www.hustingselectrical.com

office@hustingselectrical.com

Office: 01258 837385

Mobile: 07966 403 965 or 07549 380 217

Call or email us with your requirements

Electrical Contractors Since 1980

Agricultural – Commerical – Industrial - Bespoke Panel Building & Controls
Domestic – Equestrian – Intruder - SMS & Programmable Logic Automation
Alarms – Emergency Lighting – Testing - Computer Infrastructure Services
Inspection – Control Systems & Panels - Data Recovery – Firewall Security
CCTV – Data Cabling and Computing - Custom Builds & Repairs
Malware Rescue – Security & Access Control Systems
Website & Web Applications - IP – CCTV

No job too small, Friendly, Reliable & Trustworthy Team.

Call our Office for a Free No Obligation Quote

Watercress Cottage, Tindeton, Dorchester DT2 8QP



Piddle Valley Vets is a veterinary surgery where we look after every aspect of your pet's health and welfare. We match the highest quality and most up-to-date clinical techniques with a caring, compassionate and open environment.

The practice is located in the old GP Surgery in the picturesque village of Puddletown. There is plenty of on-site parking and the building has been extensively refurbished and then equipped with facilities to house animals of many different species in the most comfortable and relaxing way possible within a clean, clinical environment.

Telephone 01305 848820

www.piddlevallevets.co.uk

“Keeping Your Pets Well”

David Holah BVSc CertZooMed MRCVS

Month on the Farm

At the beginning of this week in early November we took the rams out from the ewes who should by now have all been served. The rams have had a raddle (a coloured crayon) strapped between their front legs so when they serve a ewe the colour rubs off onto the ewes back and so we can tell who and how many have been served in each cycle. The crayon is changed after each cycle approximately every 17 days - that is why you will see some multi coloured sheep around over the next few months.



With all the rain over the last couple of weeks, the fields have become rather soggy and all the cattle have come off the meadows, some onto dryer grass fields and some indoors. The grass, although still growing in the warm conditions, has lost a lot of its feed value so the younger cattle are being supplemented with some home rolled barley and rape mix and in some fields are being fed some hay or silage as a dry feed, and the older cattle are on some of the silage bales.

We have slowed up on the calf rearing as many of the autumn dairy calving herds have calved most of their cows. This will allow the hutches and sheds to have a break, so stopping a build up of bugs, before another group comes in after Christmas.





HARDY TREE

SURGEONS

EST. 1988

The Professional Arboricultural Service

Specialising in Tree Surgery, Landscaping Garden Management & Utilities
Throughout out the South

- Tree Care for Residential, Commercial, Forestry, Agricultural & Estates
- Tree Surveys, Inspections, Reports & Consultancy
- Highways, Roads & Street Clearance
- Dismantling & Felling
- Pollarding & Veteran Tree Management
- Reductions, Thinning, Pruning & Reshaping
- Crown Lifting & Dead Wooding
- Site Clearance, Garden & Hedge Maintenance
- Tree & Hedge Planting
- Stump Removal
- Logs & Wood Chippings
- TPO & Conservation Applications
- Fully Insured – £10 million Public Indemnity
- Fully Qualified – NPTC
- Tree Works to BSI 3998 : 2010 Standards
- Friendly, Reliable & Efficient Service
- Free Quotations



24 Hour Emergency Call Out

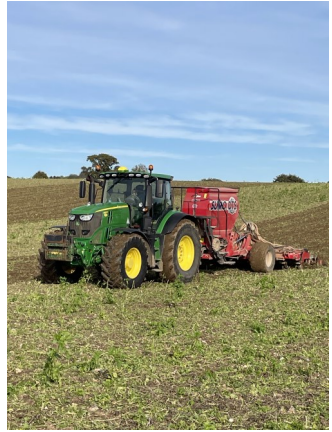
Tel. 01300 341471 ~ Mob. 07774 477435

www.hardytree.co.uk

The Office @ Unit 1 Charminster Farm Industrial Estate, Wanchard Lane, Charminster, Dorchester, Dorset DT2 9RP

email : nickie@hardytree.co.uk

The drill has been busy sowing the winter cereal crops as the mild weather has kept the soils warm resulting in quick germination and the crop growing away quickly, mostly faster than the slugs can nibble it off! The damper conditions have, however, stopped the drill for now but hopefully a few dry days and we can be on again. Later in the month we will be doing our annual tuberculous testing of all the cattle on the farm, a task that will keep us busy for six days on top of all our routine work!



And then as the year draws to a close, it is good to look back and mull over what we have achieved, how things have gone, what went right and what didn't go so well, with ideas and suggestions for 2024. Happy Christmas to you all.

Wakely Cox

10th November 2023

Puddletown Christmas Lunch



Wednesday 13th December

Lunch served at 12.00noon

Puddletown Village Hall



We will be serving turkey with all the trimmings

£15.00

Please book in advance:

Sheila: 849193; Jean: 848211

TOLPUDDLE GARDEN SERVICES

For : Garden Restoration
Re-Planting and Maintenance
All Aspects of your Garden
Undertaken

Tel: 07789 595110

Email:

Tolpuddlegardeservices@hotmail.com



The Spring Grove Forge Ltd

WROUGHT IRONWORK



Specialising in :

*ornamental ironwork
plain ironwork,
fire escapes and
steel fabrications*

PUDDLETOWN 848328

COOMBE ROAD, PUDDLETOWN, NR. DORCHESTER

West Dorset Mobile Foot Clinic



**Unable to reach or cut your own Nails?
Foot Pain when you walk?**

Then why not have Professional treatment within the comfort of your own home!

- Nail Cutting, including Diabetic Feet
- Thickened Nails
- Ingrowing Nails
- Fungal Nails
- Corns & Calluses
- Cracked Heels
- Hard Skin Removal



Book your home appointment TODAY!

07903 722542 Roy Fox
SAC Dip FHT, SAC Dip FHP, MRFP

07712 525058 Christine Fox
SAC Dip FHT, SAC Dip FHP, MRFP

wdmfc@icloud.com

www.westdorsetmobilefootclinic.com



Knighton
Countryside
Management

**Need a tree surgeon?
Give us a call on**

WOODLAND • ECOLOGY • LANDSCAPE

01305 848881

Our services include:

- Stump removal and wood chipping
- Tree surgery
- Reductions and felling
- Emergency tree work
- Tree risk assessments
- Hedge Laying and fencing
- Stump removal and wood chipping
- Log & woodchip delivered



Fully qualified and insured staff

All jobs undertaken both large and small

Friendly advice, free no obligation visits and quotes

Contact us now on: 01305 848881



office@knightoncountryside.com

www.knightoncountryside.com

Unit 37, Enterprise Park
Piddlehinton DT2 7UA

BENNETT BULLETIN FROM TORONTO NOVEMBER 2023

Christmas has come round again and I send greetings to all my friends in Puddletown and the Benefice. On the front page of the Globe and Mail yesterday was a picture of the storm lashing West Bay, so Dorset has made the Canadian press. I hope the storm passed without doing too much damage. Reading through the magazine I can see that you have been having some very wet weather during the summer. There seems to be extreme weather all around this year. Canada has had wildfires throughout the summer, so close to Toronto that at times the air was very hazy with smoke although the seat of the fire was miles away.

I manage to keep up with news from the UK. This year seems to have been particularly busy with the coronation of King Charles which I watched on TV. I haven't managed to visit the UK this year but maybe next year.

It has been quite a busy year for the family. Both my granddaughters are now at university in Toronto and my middle grandson (Isaac) who lives in the Turks & Caicos is now at boarding school in Ontario in a lovely location a few hours drive north of Toronto. I hope he is prepared for the ice and snow!

The worldwide news seems to get worse with each passing day. I pray that by the end of next year we shall all have peace.

Everyone is preparing for winter by getting the latest COVID vaccine shot and the flu shot. Mine is due next week. I wish both health and happiness to you in 2024.

Diana

TOWER NEWS

Sunday, 12 November 2023 in 48m (16-1-18 in E)

1320 Doubles (3m)

360 Grandsire, 360 Reverse Canterbury & 600 Plain Bob Doubles

1 Robin J Mears

2 Jane Pridmore

3 Gareth S Down

4 Ashley F E Monck

5 Ian D Tucker ©

6 Nigel Pridmore

Rung Half-Muffled for Remembrance Sunday
Also Salisbury Quarter Peal week



Crossways Travel

Executive Coach Travel With A Personal Touch

01305 851697

DAY EXCURSIONS AND HOLIDAY TOURS ON COACH

picking up in PUDDLETOWN, TOLPUDDLE and DORCHESTER.

Come and experience coach travel with a difference.



'FROZEN'- the Musical

January 20th, 2024 2 days £249

Join us for a fabulous short stay in 4-star London hotel to see the musical "Frozen". "Frozen" will defy all expectations on an unforgettable journey packed with thrilling surprises, hilarious characters and soaring music, including twelve new songs written especially for the show, alongside all the classics such as 'For the First Time in Forever', 'Do You Want to Build a Snowman?' and the worldwide smash-hit, 'Let it Go'.

PYRENEES MOUNTAIN RAILWAY and SPANISH WINTER SUN

February 1st 10 days £995

Join us for fabulous tour chasing the winter sun in Northern Spain. With fabulous excursions out, wine included with evening meals and a hotel near the beach, this tour will help you beat the winter blues.

OR WHY NOT JOIN US FOR A DAY EXCURSION.

01305 851697 www.crosswaystravel.co.uk

**MERRY CHRISTMAS
AND
A HAPPY NEW YEAR!**



THE PUDDLETOWN SOCIETY

Forthcoming meeting to be held in the Church Room

Wednesday 13 December

A SLIGHTLY ALTERNATIVE CHRISTMAS

Poems, songs and readings, old and new
presented by

Bonny Sartin

(retired member of the Yetties)

St Mary's Church Room 7.30 pm

Wednesday 10 January 2024

THE BIRDS OF PUDDLETOWN WATER MEADOWS/BARDOLF FARM

an illustrated talk by ornithologist
Kevin Guest

St Mary's Church Room – 7.30pm

Admission to meetings: Members Free; Visitors £5

SAVE THE DATES - IT'S **BINGO** TIME!

This Autumn sees the return of the cricket clubs annual bingo fundraisers! With hundreds of prizes to be won, and a fun filled evening for all, be sure to come and join us!

DATES

Saturday 28th October 2023
Saturday 16th December 2023
Saturday 3rd February 2024



**DOORS OPEN AT 6PM
EYES DOWN AT 7:30PM**

There will be lots of tasty treats, both sweet and savoury, as well as a bar for alcoholic and soft drinks.

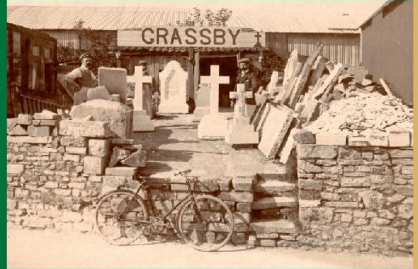
PLEASE NOTE. THESE EVENTS ARE CASH ONLY!

Bingo books and dabbers can be purchased in the night!

GRASSBY & SONS LTD



Proud to have served the
local community since
1861



FUNERAL SERVICE
8 Princes St, Dorchester

MEMORIAL MASONS
Dorchester Road, Grimstone



www.grassby-funeral.co.uk Tel: (01305) 262338
www.grassby-stone.co.uk Tel: (01305) 269678



P.N. Gray Electrical *Limited*

**A RELIABLE, AFFORDABLE AND A FAST
RESPONSE ELECTRICAL SERVICE IN
DORSET AND SURROUNDING COUNTIES**

**AGRICULTURAL - INDUSTRIAL -
COMMERCIAL & DOMESTIC
INSTALLATIONS**



**ALL ELECTRICAL WORK UNDERTAKEN FROM MINOR WORKS
TO INSTALLATIONS.
THIS INCLUDES INSPECTING AND TESTING PROPERTIES,
UNDERTAKE REWIRES AND
ANY GENERAL MAINTENANCE.**

**PLEASE CONTACT US BY PHONE OR EMAIL FOR A FREE
QUOTATION
OR SOME FRIENDLY ADVICE:**




**TEL: 01258-837354
MOB: 07774-838851**

**EMAIL: pngrayelectrical@btinternet.com
www.pngrayelectrical.co.uk**



Puddletown Weather - October 2023

*Site location (GPS): N 50° 44.937' W 2° 20.862' Altitude 88.39m
(somewhat sheltered from easterly winds)*

October 2023		
	Rainfall for the month	129.90 mm
	Cumulative for the year	749.70 mm
	2022 Rainfall for the month	93.60 mm
	2022 Cumulative for the year	473.60 mm
	Temperatures	Max. 26.50° C Min. 2.40° C
	2022	Max. 20.80° C Min. 2.00° C
	Maximum wind speed	15.20 mph
	2022	17.40 mph



Warm Space!

Every Wednesday in Puddletown Church Room.

From 10am until 3pm

Refreshments (tea, coffee, and soup & a roll) available.

Bring your knitting or craft... Come and do a jigsaw... Read a book...

All welcome!



Felling
Reductions
Pruning
Stump grinding
Hedges
Lawn maintenance
Turfing
Strimming
Garden fencing

Greenways Tree Care



&

Garden Services

Tim Moore - 01258 837124
- 07968 154708

Free estimates and Advice
20 years experience

(Fully Insured)

Dewlish, Dorchester
Chippings and Compost delivered



MONTAHUE FINANCIAL

*Offering a professional, experienced and personalised service
for all your borrowing and protection needs.*

- Later Life Lending Specialist Endorsed by the Equity Release Council
- Wide Range of Mortgage Lenders
- Life and Critical Illness Protection Plans



**Call Hugh on 01305 815901 email hugh@montahuefinancial.co.uk
or visit www.montahuefinancial.co.uk**

Montahue Financial is an Appointed Representative of Mortgage Intelligence, which is authorised and regulated by the Financial Conduct Authority under number 305330 in respect of mortgage, insurance and consumer credit mediation activities only

GARY SPRATT

**GARDENS AND WOODLANDS RESTORATION AND MAINTENANCE
EXPERIENCED. QUALIFIED. INSURED.**

FRIENDLY RELIABLE SERVICE BY COMPETENT PLANTSMAN.

Careful and correct pruning of all trees, shrubs, roses and climbers.

Skilled training and tying of wall shrubs, roses and wisterias.

Professional tending of herbaceous borders.

Hedgelaying, pleaching, hedge cutting and renovation.

Coppicing and woodland management.

Wildlife habitat conservation.

Phone: 01258 837927. Mobile 07929 832244

The churches of Puddletown,
Tolpuddle and Milborne with
Dewlish invite you to



BUBBLE CHURCH

Sunday 10th December

Sunday 14th January

4.00 p.m. (Doors open 3.45 p.m.)

Puddletown Village Hall

Bubble church is a monthly Sunday church service especially for babies, toddlers and young families (7s and under). It's puppet-packed, Jesus-centred, coffee-and-cake fuelled, 30-minute kids' and families' adventure.



Book NOW at

bubblechurchPuddletown@gmail.com



Choose *GreenThumb* to bring your lawn to life...

We offer seasonal weed and feed treatments from just £15* that will keep your lawn looking lush, green and weed-free throughout the year.

We also provide beneficial treatments to keep your lawn in tip-top condition:

- ✓ Hollow-tine aeration
- ✓ Scarification
- ✓ Lawn disease management

For your FREE lawn analysis, call today: 0800 0111 222

E: dorchester@greenthumb.co.uk

GreenThumb

LAWN TREATMENT SERVICE

Philip Trim Contractors

ULTIMATE LIQUID & SLURRY SOLUTIONS

Liquid Waste Disposal
Emptying of septic tanks,
cesspools, gullies, interceptors,
grease traps, event & festival hire

Local professional service

www.philiptrimcontractors.com

info@philiptrimcontractors.com

Chamberlaynes Farm Workshop
Bere Regis Wareham BH20 7LS



RING NOW FOR DETAILS
01929 472192
07971 005579

Puddletown Resident receives Police Awards

Janet Ranger-Dennis has received three awards this year for her voluntary work with Dorset Police, namely - a member of Volunteer Team of the Year for Dorset, Individual Volunteer of the Year for Dorset, and Individual Volunteer of the Year for the South West Region*.

She has been volunteering with Dorset Police for ten years, joining the 'police family' in 2013 to become part of a new department - the Victims Bureau (VB); not to be confused with Victim Support. On 19th November it will be the 10th Anniversary of VB; in 2013 Dorset was only the second county in the country to have a VB, which keeps victims of crime updated about investigations. Previously, it was found that victims were often overlooked and did not know about the progress or the outcome of an investigation. Her roles now extend to 'role play' which helps to train new officers, and offering hospitality at police events.

Interestingly, it was at the Imjin Barracks in Gloucester that Janet represented Dorset Police for the Volunteer Team Award and the Individual Award, the event being the South West Regional Police Awards hosted this year by Gloucestershire Police Force on 15th October. The Imjin Barracks are a NATO Base and home to the Gurkhas and the First Battalion of the Gloucestershire Regiment, so there were armed soldiers and mounted police on duty. Her award as Volunteer of the Year for the SW Region was presented by the Chief Constable of Gloucestershire and the High Sheriff of Gloucestershire. (On this occasion the Team Award went to Gloucestershire Constabulary). *The South West Region consists of Avon & Somerset, Devon & Cornwall, Dorset, Gloucestershire, and Wiltshire; the efforts made by the five Regional Police Forces taking part shows the importance they place on volunteering by the public.



Ernest G Hart Ltd

marquee and event hire specialists

Supplying fine marquees since 1944



For expert advice and friendly service
please ring us on

01258 881047

www.ernestghart.co.uk

Unit 1, Milborne Business Centre, Blandford Hill
Milborne St Andrew, DT11 0HZ



ockalty

Professional Animal Services
Qualified veterinary nurse with
qualifications in agriculture

Offers you a bespoke pet
service tailored to meet all your
individual needs

Dog walking Daily cat visits
Dog day care Equine
Boarding Small holdings
Home visits

Other services offered

Contact Gill 07791 567944

Email info@ockalty.co.uk

Website www.ockalty.co.uk



KNIGHTON

Plumbing & Heating



Daniel Dorton

6 Glebe Way, West Knighton

Tel: 01305 853893

Mob: 07837 654921

All aspects of plumbing work from a dripping tap
to a full central heating installation

Fully qualified, fully insured, all work guaranteed, references available
High quality work at competitive rates, local plumbing competition winner

24 hour call out with no call out fee, free quotes

10% discount on labour for OAP's



"Right first time"
"Installing quality into your home"



CONTACTS PAGE - Please help us keep these pages up to date by notifying us of any changes		
CLERGY	The Revd Sarah Hillman (Vicar)	01305 848 784
	sarah.c.hillman@outlook.com	
LICENSED LAY MINISTER	Margaret Rickard	01305 849332
CHURCHWARDENS	Cynthia Metcalfe (Puddletown)	01305 848 043
	Dawn Loveless (Puddletown)	01305 849 534
	Hilly Cobban (Tolpuddle)	07817 557367
	Jayne Brayshaw (Tolpuddle)	01305 849 314
	Pam Shults (Milborne St Andrew)	01258 837 203
	Tony Fox (Milborne St Andrew)	01258 837 651
	Sue Britton (Dewlish)	01258 837 218
	Jim Burg (Dewlish)	01258 837 466
BENEFICE OFFICE	Emma Hughes	
(www.puddletownbenefice.org)	puddletownbenefice@outlook.com	
PUDDLETOWN CONTACTS		
Alcoholics Anonymous		
Area Parish Council	Alan Sheppard Email:clrashppard@puddletownareaparishcoun cil.gov.uk	07771 98 8574
Area Parish Clerk	Michelle Harrington clerk@puddletownareaparishcouncil.gov.uk	01202 670105
Bell Ringers	Robin Mears	01305 848 021
Children's Society	Dawn Loveless	01305 849534
Church Room	Jane Stanley	01305 848494 07871 169014
Community Café	Katie Weiss	
COMMUNITY LIBRARY	Run & financed by volunteers	01305 848 506
	puddletownlibrary@gmail.com	
Opening Hours:-	Wednesday: 3.00pm to 5.00pm Friday: 10.00am to 12.00noon Saturday: 10.00am to 12.00noon	
County Councillor	Emma Parker	
Cricket Club	David Stevens	07720 411 952
Cubs, Scouts & Beavers	Barry Thomas www.puddletownscouts.org.uk	01305 852314
Football Club	Steve Brown	07789 821 408
Flower Rota	Heather Mears	01305 848 021
Footpaths & Rights of Way	Julian Hubbuck julian.hubbuck@gmail.com	07881 678 126

CONTACTS PAGE - Please help us keep these pages up to date by notifying us of any changes		
DOCTORS		
Puddletown Surgery	Dr J Griffiths, Dr C Burnham & Dr J Bond	01305 848 333
Puddletown Surgery (Dispensary)		01305 849 329
Out of hours medical advice & NHS Direct	Out of hours medical advice & NHS Direct	111
Friends of Puddletown Church	Jill Temple friendsofpuddletownchurch@gmail.com	
Friends of Puddletown Library	Paul Poser	01305 848 176
Gift Aid Co-ordinator	Bob Todd	01305 849 048
Guides, Brownies & Rainbows	Amy Knight	01305 848 602
Gym	Dan Weiss coachdan26@gmail.com	07547 713675
Handbells	Bob Todd	01305 849 048
Mini-Soccer/Youth Football	Jon Palmer	07891 173 999
Neighbourhood Plan	Clerk to PAPC	
PCC Secretary	Emma Hughes	
PCC Treasurer	David Elliott	07776 256537
Pilates (at First School)	Kathy Ashdown	07967 655159
Puddletown CPPP	www.facebook.com/puddletownplaypark	
Pumpkins Toddler Group	Find us on Facebook or Instagram @puddletownpumpkins	
Puddletown Society	John Ridout	01305 848 940
Puddletown Ukulele Group	Bob Watson bobwatson55@hotmail.com	07725 684 400
Recreational Multi Games Area	David Knight	07890 260 320
Recreation Ground Pavilion	Liz Knight	01305 848 380
Royal British Legion (RBL)	S Ridout	01305 848 940
Rugby Club	Ray Stephens puddletownrfc@hotmail.com	07966 412 467
SCHOOLS		
Pre-school	Sharon Brown www.puddletownpreschool.co.uk	01305 849 533
First School (Head of School)	Mrs A Seal www.puddletownfirst.dorset.sch.uk	01305 848 206
St Mary's CE Middle School	Mr Tim Ennion	01305 848 293
Short Mat Bowls		
Village Hall Caretaker/Bookings	Kevin Smith	07706 798271

CONTACTS PAGE - Please help us keep these pages up to date by notifying us of any changes		
Village Hall Committee Secretary	Amy Knight	01305 848602
Yoga	Mandy Cooper	07713 477737
Young Farmers (Dorset)		01305 263 947
TOLPUDDLE CONTACTS		
Defibrillator (outside Martyrs Inn)	Clare & Roger Angus	07720 059035 or 01305 848286
Orchard Meadow	Clerk to PAPC	
PCC Secretary	Heather Saunders	
PCC Treasurer	John Taylor	01305 848 552
Physio-Led Pilates	Sam Buxton	samjbuxton31@gmail.com
Pilates	Kathy Ashdown	07967 655159
Tolpuddle Events Committee	Ian Cray	
Tolpuddle Home Group		
Tolpuddle Old Chapel Trust		info@tolpuddleoldchapeltrust.org
Tolpuddle Toddler Group	Maria Palmer	07717 506020
Tolpuddle Village Meeting	Tyra Nozaic Goosen, Clerk.	tolpuddlemeeting@yahoo.com
Tolpuddle Village Show	Jo Austwick	austwickjoanne@gmail.com.
Tolpuddle & Southover Village Website	www.tolpuddlevillage.co.uk	tolpuddlevillagewebsite@gmail.com
Village Hall Bookings Sec.	Jo Austwick	tolpuddlevhinfo@gmail.com
Village Hall Chairman	Peter Walton pdwalton@btinternet.com	01305 848 034
Yoga (Iyengar)	Sue Chapman	01305 848 053
USEFUL & EMERGENCY NUMBERS		
Benefit Enquiry Line		0800 88 22 00
Dorset Community Action	info@dorsetcommunityaction.org.uk	
Dorset County Hospital		01305 251 150
Electricity Failure (Southern Electric)		0800 0727 282
Gas Leak or a smell of gas		0800 111 999
POLICE—Local Officers	PC Moore 0229 & PSCO Alison Donnison 6500	101 or "Contact Us" section on Dorset Police Website

CONTACTS PAGE - Please help us keep these pages up to date by notifying us of any changes		
DEWLISH CONTACTS		
Cricket	Elaine Kellaway	01258 837 696
Ladies Group	Judith Bridgen	01258 837 157
Parish Council	Chris Udens (Chair)	07973 167117
Parish Clerk	Amanda Crocker dewlish@dorset-aptc.gov.uk	
Village Hall (Chair)	Andrew Barnett	07551 839296
Village Hall (Sec)	Alex Carter	01258 837 312
MILBORNE ST ANDREW CONTACTS		
Allotment Society	Joy Robinson	01258 837 661
Archery	Mike Healy	01300 342 134
Badminton	Bruce Dyer	01258 839 117
Bellringers		
Busy Bees Group (Under 5s)	Claire Tudge	07970 734 162
Cribbage	Peter Anthony	01258 837 089
Food & Wine Club	Steve O'Neill	07490 691 121
Gardening Club	Bill Love	01258 837 677
Ladybirds Playgroup	Liz Dyer	01258 839 117
Milborne First School	Michelle Cheeseman (Head)	01258 837 362
Milborne Players	Gren Davis	07876 793 319
Nightsabre Dog Training Group	Natasja Lewis	07896 275 357
Neighbourcar	Nigel Hodder	01258 470 333
Parish Council	Richard MacNair (Chair)	07774 081 551
	Wayne Lewin (Clerk)	07419 136 735
Patient Voice Secretary	Nigel Hodder	07983 013 781
Pilates (at First School)	Claire Barratt	07703 648869
Scout Group	Sam Elliott	07873 762 035
Sports Club	Richard Lock (& Bookings)	01258 837 929
Tap Dancing (Adults)	Kevin Selby	01305 250 386
Tennis - Member's Secretary	Rich Hawker	07983 013 781
Village Hall	Linsey O'Neill (Chair)	07798 720 812
	chair.msavh@gmail.com	
	Susan Poet (Bookings)	07866 313 999
Wednesday Social Club	Sheila Burton	01258 839 033
Women's Institute	Lesley Clarke	01929 471 732
Yoga –at First School (Iyengar)	Sue Chapman	01305 848 053
Yoga –at Village Hall	Angela Johnson	01258 839 060



St John's Church Tolpuddle December 2023

Yes - winter is really here - the storms have brought all the leaves down, the evenings are dark and the heating has been turned on. As I write this at the beginning of November many of us feel that much of the world is also dark and gloomy with so many dreadful events - friction between nations causing untold suffering and pain to all age groups young and old. Are we aware that according to Wikipedia 9.5% of Palestinians are Christian and there are approximately 185,000 Christians in Israel, who, just like us, simply want to lead peaceful lives. We also can't forget those displaced in Ukraine and other areas of conflict.

Back here we remember our Benefice farewell to Maggie who has also had to move on to another place, with her parents- she will be sorely missed.

Meanwhile we here in Tolpuddle have been busy with plans for our Bonfire Night - we were so lucky with the weather - some sunny intervals in the day and a dry evening - the TEC team had worked very hard under the directorship of Jonathan Van Baars. The Bonfire and Fireworks were organised by Ray Kerslake - and we probably welcomed in excess of 500 happy visitors, some from far afield - to watch the show and drink hot chocolate and soup, eat a BBQ and of course the bar was busy too!



Then there is a bit of a breather before Advent and the Christmas celebrations - note these dates in your diary:

December 9th- the Village Lighting up and a variety of stalls in the Village Hall - do join in the fun - and decorate your own house.

December 10th- 5.30 - Carol Service in St Johns

December 17th- 6 pm - Songs, Carols and Christmas cheer in the pub

December 24th- 9.30 am Christmas Communion - note the date of this

December 24th- 3.30 pm- Crib Service

December 25th- NO SERVICE HERE but look in the magazine for services elsewhere in the Benefice.

Continued on page 35



Enjoy your later life at Home Instead

We believe as you age, you should continue to live your life in the comfort of your own home.

Home Instead Dorchester are an award-winning care provider that supports individuals to remain as independent as possible by providing in-home care services.

We can help with:

- ♥ Companionship
- ♥ Help Around the Home
- ♥ Personal Care
- ♥ Preparing Meals & Drinks
- ♥ Specialist Care
- ♥ And so much more

Benefits of Home Care

- ♥ The security and comfort of living in a familiar environment.
- ♥ Avoiding the potential stress associated with selling a family property.
- ♥ Safeguarding inheritance.
- ♥ The prevention of separation from cherished pets.
- ♥ The ability to pick what and when to eat, with prepared meals available upon request.
- ♥ Couples and partners who are married may continue to live together.

If you would like to know more, contact **Home Instead Dorchester** for more information

01305 239289
Homeinstead.co.uk/Dorchester

What plans for the future of our church - who knows - but we do realise that unless the size of our congregation increase we are likely to be under threat of cancelled services. But we are also aware that many people in our village work hard towards the sustainability of St John's as a historic building and a peaceful place of sanctuary - it is open every day during daylight hours - and don't forget that we still have the food bank available there for YOU.

The Camping Team have put everything away ready for another season - and we are indeed so very grateful for them all for the work they have put in to earn some extra money for the church to help pay for all the expenses - heating, lighting, insurance etc. which we have to find. The Treasurer is also very grateful for all those who pay into the funds through Parish Giving - perhaps you could spare a few pounds?

An exciting new initiative is to start - a thirty minute service aimed at babies and toddlers (7s and under) called Bubble Church - with drinks and cake. The first one will be on **December 10th - at 3.45pm** in Puddletown Village Hall.

There will be lot happening through 2024, organised through TEC (Tolpuddle Events Committee) and now a date for your diary- there is to be a concert in the Church on **Sunday March 3rd** organised by Dr Richard Hall - more information to follow. This will be very special as he really knows the acoustics of the church, as he plays the organ for us every week.

Keep smiling through these dark days,

Hilly and Jayne

The true meaning of Christmas

Journey to the stable is an interactive experience helping to explain the true meaning of Christmas. This is ideal for adults and children alike. The journey takes 20 - 30 minutes. There are seven stations focusing on a person or a part of the Christmas story with readings and reflections. At each there is a small activity or object for you to take away, so you leave with a bag of reflections and goodies. Open at the United Church, South Street, Dorchester Sat 9th Dec, Thurs 14th and Sat 16th Dec 11-3pm, Fri 15th 11-1.30pm



In the week before Christmas there will be two Family FunDays on Tues 19th and Thurs 21st 10-1.30pm where there will be refreshments, crafts, biscuit icing and "Getting in the Picture", an opportunity for a photo in a nativity setting. Baby changing and feeding facilities will be available. You can also visit The Stable.

In the busyness of the Christmas shopping, writing the cards and icing the cake, **take a few minutes to be still.**

A.M.T Building & Gardening Services

Andy Thorne
Stone Bungalow, Burleston

Tel; 01305 848188
Mob; 07970824511
e-mail; andrewt.thorne930@
googlemail.com

Most Aspects of Building & Gardening Maintenance undertaken.

**Grasscutting and Hedgetrimming.
Brickwork and Blockwork.
Carpentry and Timber Structures.
Decking, Patios & Concrete Bases.
Painting and P. V. C. Fascias,
Soffits and Guttering.**

Free Written Estimates. No V.A.T.

Art Res Q,s Art Classes

Willoughby Cottage
Puddletown

A choice of your own subject in any media you choose.

Wednesdays 10.30-12.30

Call for details 07970675429
g.s.lacey@btinternet.com
Qualified Art Tutor Gilly

We aim to improve your level of skill



Pet portraits Commissions



CHRIS RAWLINGS
Building and General Maintenance

FREE QUOTATION FULLY INSURED

Extensions	Fascia, Soffits and Guttering
Re-Pointing	All Garden Works
Plastering	Patios
Painting	Driveways
Brick and Block Work	Fencing

Call Chris on 07833467176 Or 01305 251974

chris.rawlings01@yahoo.co.uk

www.chrisrawlingsbuildingandmaintenance.co.uk

TOLPUDDLE VILLAGE HALL

NEWS

Registered Charity No. 257403



150 Club Draw—September & October Draws 2023

In aid of the Tolpuddle Village Hall Development Fund

The new 150 club is now underway and the first draw has taken place. It is drawn live on the Tolpuddle Facebook Community page with results published here as well.

2023	1st (£20)	2nd (£15)	3rd (£10)
September	Ian & Suzanne Cray	Kirstie Matthews	Laurence Trecani Chinelli
October	Daryl Walmsley	Michael Hanson	Maureen McDonald

Quiet Christmas Service

Do you struggle to cope with a full church service, but want to sing carols, listen to the familiar readings that tell the Christmas story and share the joy and peace of Christmas with family and friends?

“Quiet Christmas” is the service for you. This is a short 30 minute service with familiar carols and readings. It is aimed at people who have recently been bereaved, can be confused in the present, but have good memories of Christmases past, for those who find sitting or concentrating for a long time difficult and all their carers and friends.

Everyone is welcome to Quiet Christmas on Friday 15th Dec at 3pm in United Church Dorchester, South Street.

The service will be followed by tea and Christmas fare.

Everyone welcome

DO YOU NEED HELP WITH PROBATE?

Obtaining a Grant of Probate and dealing with the administration of an estate is not always easy or straightforward. We understand that you want to get through the process as quickly and cost effectively as possible.

If you need help from a solicitor to administer an estate, you will find our charges are very reasonable. We can explain the process and provide the help you need to deal with all aspects of the administration on a fixed fee, so you know from the start how much it will cost.

We provide friendly, expert advice in your own home (when permitted) and remotely, to help you administer the estate as quickly as possible.

All initial enquiries are free of charge and without obligation, so you have nothing to worry about.

Please call us on: 01308 424808 or email: christine@winterbornelegal.co.uk

Winterborne Legal Services

www.winterbornelegal.com

Probate and Estate Administration | Wills | Lasting Powers of Attorney



Authorised by CILEx Regulation

I.J.SPILLER & SONS

PAINTERS & DECORATORS

PROPERTY MAINTENANCE

EXTERIOR & INTERIOR

FREE ESTIMATES

Tel: PUDDLETOWN

Office:- 01305 848523

Mobile:- 07825 184683

E-mail : nspiller@btinternet.com

REFURBISHING DORSET PROPERTIES WITH A QUALITY SERVICE

Tolpuddle Events Committee (TEC)

We were so lucky to have chosen 3rd November for our bonfire and fireworks event - it was a fine and dry day, and it was a huge success! Many hundreds of people turned up to enjoy the home made soup, live music, drinks and tasty barbecue before heading to the field for a roaring bonfire and spectacular display of fireworks. Our grateful thanks to Tom and the TUC for the use of the field and Barn, and to all the volunteers who helped on the night.

The team are now busy preparing for our next events in the Village Hall - the Christmas Light Up and Festive Stalls on the 9th December, and the Children's Party on the 10th. Full details of both events can be found on the website - <https://www.tolpuddlevillage.co.uk/>.

2024 events in the pipeline -

January: 12 January, 2024: Quiz and Chips

February: Film Night

February: Pets Advice Morning

Saturday 2 March: First Aid Course - Certificated - further details soon

March: Craft Fair

April: Bingo

Best wishes for a very happy festive season from the TEC!

Mandy



We've got online carol-singers again!

Do you run holiday accommodation or a local business?

The new Tolpuddle and Southover Village website www.tolpuddlevillage.co.uk has a Local Accommodation page and we would love to hear from you if you would like to add your holiday accommodation.

We also have a Local Business page and again, please do get in touch if you would like to advertise your business.

We look forward to hearing from you. Please email: tolpuddlevillagewebsite@gmail.com

PICTURE FRAMING

Over 20 years experience. Large range of frame mouldings and mount colours.

Five types of glass.

Needlepoint and Tapestries,

Stretching and Framing.

Mirrors made to order

Telephone 01305 265137 to arrange an appointment or home visit.

R.A. Clarke-Williams

THE CHEST OF DRAWERS

DORCHESTER

44 Manor Road, Dorchester, DT1 2AX

Blanchards Bailey
Solicitors

With you for
life's journey



www.blanchardsbailey.co.uk
Call us on: 01305 251 222

MANNA CATERING
KITCHEN SERVICES

CALL US ON 01305 851 551

buffets ★ canapes ★ desserts
★ platters ★ private chef hire ★

www.mannakitchen.co.uk



Adult evening class
Tolpuddle Village Hall
18th January 2024
7.30pm to 9.30pm

Functional Ware- What will you make?

For full details and to book please email

creativeclayforall@yahoo.co.uk

<http://www.creativeclayforall.co.uk>



live happy!

with
Slimming World

Now at

Sports Pavilion, Lane End, Milborne St Andrew

On Monday evenings at 7.30pm

Call Julie 07871 821928 for more details

for the delicious worry-free eat
slimmingworld.co.uk

0344 897 8000



© 2023 Slimming World. All rights reserved. Slimming World is a registered trademark of Slimming World.



Food Bank
For YOU

In

St John's Tolpuddle

(Come and help yourself)

Combens

Dorchester Shop Now Open!



Broken Dishwasher?

Washing Machine in Need of an Upgrade?

Need Help Picking the Right TV?

Pop in or Give us a Call!

Dorchester, Poundbury, DT1 3DY 01305 269988

WWW.COMBENSAPPS.CO.UK

Milborne St Andrew Church News

The Benefice Service on the last Sunday in October was the occasion of Maggie's last Service with us. It was very well attended and a highly emotional service as we said our "Goodbyes" (literally "God be with you.") We shared a bring-and-share lunch afterwards, and Maggie left with many cards, gifts, and our prayers and good wishes. She was Licensed to the Shaftesbury Team Ministry on Monday, 13th November.

On All Saints' Sunday, our Service reflected on some of the many Saints who "cheer us on from the Grandstand" and were reminded that a Saint, not unlike a stained-glass window, is someone the light shines through. Our next Milborne Praise, on Advent Sunday, December 3rd, will look at some of the Advent traditions as we prepare for Christmas.



Remembrance Sunday saw a large congregation at St Andrew's. Artwork by pupils from the First School enhanced our observance and added to the beautiful flower arrangements in the Church. It was lovely to have the Beavers with us in their uniforms and for them to parade their Banner at the beginning of the Service to the strains of "O Valiant Hearts." Tony and Angela read the lessons, and Pam led the Intercessions and lit the candles, one for each of the fallen from this Parish. Sarah's powerful sermon was based on the final lines of the First Lesson, "Let justice roll down like waters, and righteousness like an ever-flowing stream." We then joined others at the Memorial Stone for the Act of Remembrance there. Rich Hawker's very moving poem spoke volumes. Milborne certainly did "Remember them." On the list of the fallen

was a name omitted for at least 40 years; the soldier from Milborne died in 1917 and is commemorated on the Arras Memorial. While researching my own war dead, I happened upon one Samuel Copp, 35, "son of Richard Copp of Milborne St Andrew." So, he will be remembered by name in the future.

Our Christmas Fair is on Saturday, December 2nd, in the Village Hall from 11.00 – 2.00. Do come along and grab a bargain and help raise funds for St. Andrew's.

Our Christmas Services are as usual. Carols by Candlelight on Saturday, 16th December at 6.00 p.m. A small choir is being formed to sing three items; if you are interested in joining us, please contact Tony (01258 837651/07368 [145584/tony.fox@tinyworld.co.uk](tel:01258837651)), and I can supply you with the music. There will be a couple of rehearsals. Our Christmas Eve Eucharist is at 10.00 p.m. (there is also a Midnight Mass in Puddletown at 11.30 p.m.), and on Christmas Morning, a Celebration for all the family at 10.15.

We send our condolences to the families of the recently departed John Martin and Dorothy Paul. "We remember those upon another shore and in a greater light", as the Bidding Prayer from the King's College, Cambridge Carol Service reminds us.



Safety on the roads

How drivers and horse riders can share the road space safely.

There are many horse riders in the parish. I am very keen to raise awareness regarding passing horses and riders on the road safely which, in turn, will keep all road users safe.

Over the years the roads have begun to get very busy. Most drivers slow down and pass safely, but there are still a few road users who are unaware of the Highway Code and the current laws. This has created many near misses and incidents that could have been easily avoided using the correct method of passing and, of course, a bit of patience.

Unfortunately, not all bridleways are linked up and are often only accessible by using roads.

Horses are flight animals which means simple things such as a bag flapping in a hedge could cause them to spook. Even when a driver has slowed down to pass, just accelerating away quickly can make them jump, so it's worth waiting for a horse and rider to be completely clear before you move off. So, we ask that drivers check the guidance and abide by the Highway Code.

One local rider, who wishes to remain anonymous, said *"I have been riding since I was four years old and, in that time, I have had a lot of near misses with cars driving way too fast past my horses. There is one ride that still haunts me to this day. I was riding downhill on a country lane and a driver came speeding down in his van around the blind bend, screeched on his brakes, but unfortunately didn't stop in time and hit my horse. Luckily, myself and the horse only suffered minor injuries. My horse actually retaliated and kicked the van, which dented it! The driver then sped off and didn't even check if we were OK. Please, please, drive carefully as you never know when a horse is around the corner."*

As a horse rider myself, and my daughter rides too, I'd like us all to remember that riders, cyclists, drivers and bikers are parents, grandparents, children, siblings, friends and fellow human beings, and we would never forgive ourselves if we injured someone on the road.

We all deserve to be safe on the roads and should work together to make sure we all get home safely to our families, whichever way we choose to travel.

Suzanne Cray

THE HIGHWAY CODE STATES:

- Always **pass wide and slowly**. When you see a horse on the road you should slow down to a **maximum of 10 mph**.
- Be patient - do not sound your horn or rev your engine.
- When safe to do so, pass wide and slow allowing at least two metres of space.
- Riders may ride in double file when escorting a young or inexperienced horse or rider.
- Take great care and treat all horses as a potential hazard.

For full details please check rule 215 of the Highway Code at www.gov.uk

Pam and I, the members of the PCC and all at St Andrew's send our very best wishes for Christmas. We look forward to welcoming you to St Andrew's over the festive period. Our thanks to all who have supported us over the past twelve months in whatever way. We do appreciate it.

*Tony & Pam,
Churchwardens*

Milborne St. Andrew Gardening Club

The Gardening Club have been busy! We hope that you have noticed that the tatty old planter at the head of Milton Road disappeared in October, to be replaced by two amazing new ones in November. This was a joint project between the Club and the Parish Council to try to smarten up the village. The photos show the 'before' and 'after'.

Also in November we had our AGM and social with a quiz, and Gardening Club next meets on January 18th - new members welcome.

Angela Johnson



Before



After



**The
Carpet Company**
THE KARNDEAN EXPERTS

www.thecarpetcompany.co.uk



Visit us at:
Pouncy Hall, Liscombe Street,
Poundbury, Dorchester
DT1 3DF
01305 261886



Visit us at:
7A Littlemoor Road,
Chalbury Corner, Preston,
Weymouth DT3 6LA
01305 760908



Milborne Ladybirds Playgroup

Finally, moving into school

Well, it has taken longer than expected but finally Ofsted have endorsed our registration, and we can move into Milborne First School. Exciting times and opportunities to expand Ladybirds Preschool within the wonderful environment of our Village First School. Ladybirds remains a Charity governed by the Trustees not under the school Academy or Governors. We continue to welcome all children regardless of which school they will join when they become school aged. We would like to thank the parents and community, particularly the other Village Hall users and committee for their patience and understanding over the last 20 years.



While we have all been busy sorting out our move, the children have been blissfully unaware and carried on playing and learning as usual. Since my last report the children have enjoyed the 'scary' Halloween – scooping out pumpkins to make jack o lanterns, exploring the seeds, painting pumpkin pictures and collaging bats. Of course, there had to be the witches cauldron and all the magic of mixing potions with magic spells. Room on the Broom and Meg and Mog books promoted imagination.

With plenty of rain, the big puddle formed in the outside area and led to much fun jumping and riding vehicles through it. Boats, fish and ducks were added and impromptu “5 little ducks” appeared. Another excuse for a song, this group really enjoy songs, music and musical movement.



On a rare occasion without rain the mud was uncovered and the toy diggers used. There were so many worms and with each one found there was a smiling child holding it up to show. Many ended up in bug pots and you can be reassured all were returned to their natural habitat and lived another day.

We wish all our friends and supporters A Very Merry Christmas.

Liz Dyer (Leader)

01258 839117 or 07771 512427

Kelly Haggett (Secretary)

secretary@milborneladybirds.com

www.milborneladybirds.org.uk



Sue Adams Law

I am a sole solicitor practice based in Tolpuddle and operating throughout Dorset and beyond. I have over 35 years' experience as a lawyer.

Specialising in:

Wills // Trusts // Tax and estate succession planning
Probate // Lasting powers of attorney

I offer an expert, cost effective and personal service. Please contact me for an introductory chat and for more information.



sueadamslaw.com

01305 457807

info@sueadamslaw.com



Sue Adams Law is authorised and regulated by the Solicitors Regulation Authority under registration number 8003077.

R2 ELECTRICAL LTD

Testing and Inspection, certification of commercial and domestic premises.

NICEIC registered contractor .ECR's , EICR's, Minor works.

Fault finding, installation, re-wires, new builds, garden offices, led upgrades, EV Charge Point.

Local electrical services, Puddletown

07782148696 / 01305849192

r2electricaltd@gmail.com

r2electricaltd.com





Milborne St Andrew First School

On Sunday 12th November, the school took part in our village's Remembrance Service.

It was a lovely morning and very moving to see so many from our community come together.

The children have been working very hard to create some 'poppy art' to decorate the Church, which looked fantastic and gained lots of compliments.

A very special thank you to George, who laid our wreath and to Aria, Alice, Myles, Evelyn, Jon and Ben, who read the names of the fallen and their own poems during the service. They did a remarkable job and read beautifully. They should be very proud of themselves.



We are so proud of our school. Our recent survey told us that 100% of our families feel that their children are happy and learn well at our school and that they would recommend it to others. Ofsted agreed with the views of our families and staff that our school remains a 'Good' school and noticed that our children get along harmoniously when they play and learn a broad and balanced curriculum. All visitors to our school who come to work with us notice our amazing children and what a warm school environment we have.

Thank you to the staff team, to our children and the school community and to the wider village community for working together to achieve this. I feel very fortunate to work at our fabulous village school.

Mrs Cheeseman

Are you passionate about your local area?



Do you want to make a difference in your local community?



Would you like to offer your skills & experiences?



Do you enjoy being part of a team?

Join Puddletown Area Parish Council

If you care about where you live and are passionate about your community, **WE NEED YOU**

To find out more contact: Michelle Harrington, Parish Clerk.

e: clerk@puddletownareaparishcouncil.gov.uk

t: 01202 670105



Reg Charity No 1198452

Heating, Eating or Health – do you have to make the choice?

All of us are seeing rapidly rising costs when at the supermarket or paying our bills. However there are some in our local community who are now having to make the choice between heating, eating or whether to get their prescription. At Dorchester Poverty Action's recent Open Meeting, Caroline Buxton from Citizens Advice said it was getting so difficult for some, that they are having to make really difficult decisions about whether to heat or to eat or if they can afford their prescription. The organisation are now finding that however hard their debt volunteers try, for some families, they cannot achieve a balanced budget. There is just nowhere to cut costs to make ends meet. Her stark warning was Citizens Advice are now not just dealing with poverty, but destitution.

Dorchester Poverty Action has been here through the "Cost of Living Crisis" helping individuals and families living in DT1 and DT2 cope with financial emergencies. A grant of £250 can make all the difference between being in debt and managing the emergency. These include when the car breaks down and you need it for work or you have a new baby and the washing machine stops working. Clients are referred by professional agencies eg health visitors, social workers, tenancy support workers, Citizens Advice for a grant. In the last financial year DPA saw the number of grants given rise by 47%. Over £62,000 was distributed across DT1 and DT2. Dorchester Poverty Action cannot keep helping at this rate without the generous donations of local people. Everyone is having to be more careful financially, but if you can spare just a small donation to help local people, Dorchester Poverty Action can continue helping as it has done for the last 30 years.

To find out more about Dorchester Poverty Action go to www.dorchesterpovertyaction.org.uk where you can learn more about the charity and donate online. Alternatively cheques can be made out to Dorchester Poverty Action and sent to DPA c/o United Church Dorchester 49-51 Charles Street, Dorchester DT1 1EE. Thank you.





B BRYANSTON
Choral Society

Christmas Concert
Saturday 9th
December

**St Martin's Church,
Bryanston 4:00 pm**

HAYDN: Little Organ Mass
Insanae et Vanae Curae

And some familiar and favourite Carols!

Ticket prices: Adults £10.00
Under 16's £5.00 under 5's free.

For more details:
<https://www.bryanstonchoralsociety.co.uk>



Canzonetta

Music for the festive season

An hour of seasonal songs and carols



Sunday 3rd December 2023

Church of the Holy Rood

Church Lane

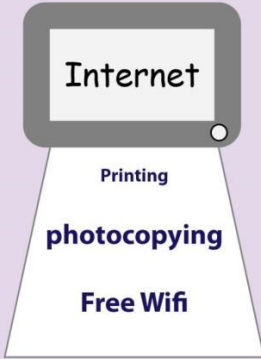
Wool

BH20 6DD

3pm

Free admission

**Retiring collection for the Church
Mulled wine and mince pies**



Internet

Printing

photocopying

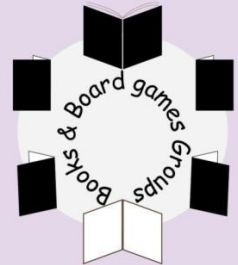
Free Wifi



Puddletown Community Library
More than just book loan
puddletownlibrary@gmail.com



The library welcomes
new volunteers
to help run the library



LIBRARY HOURS:
Wednesday 3pm-5pm
Friday 10am-12pm
Saturday 10am-12pm

Dewlish Church Notes



MAGGIE has now led her last service in our benefice before her move to Shaftesbury. Although we knew she would be with us for just a short while, we are all so sad to see her go and will miss her greatly; she has contributed so much in her ministry here, and we have become great friends. We wish her all the very best in her new role.

We now have a final figure for money raised at the Harvest Supper: £261, a really good sum. Additionally, Jim has a final figure for his sponsored Historic Churches cycle ride, and that amounted to £1,010, a wonderful amount. Enormous thanks to friends, family and the wonderful people of Dewlish. Half of that sum - £505 – will be returned to our church, and will be a tremendous help with all our incumbent costs.

And now to December!

On Saturday 2nd December we shall be holding our **Christmas Bazaar**, starting at 2.30pm in the Village Hall. Please do come and support us. Donations for the stalls would be most welcome, especially of cakes! Tea, coffee and mince pies will also be available, along with raffles. We look forward to seeing you!

Our **Carol Service** is on Sunday 17th December at 3.00pm. Jim very much hopes that children and young adults will take part. Please let us know (Tel: 01258 – 837466) if you would like to participate. Refreshments will be served in the Village Hall afterwards.

Finally, our Christmas morning **Holy Communion Service** is at 9.00am. We will not be holding a Christmas Eve service but there are others in the benefice.

Daphne Burg

6	1		7			
				4	5	2
			8			3
	7		8		9	
		2			6	
		3		2		8
4			5			
1		6	3			
			4		9	7

Colsan Property Services.

Complete property maintenance.

Lime pointing specialist.

General repointing work.

Heritage work.

Listed properties.

Blockwork, Brickwork.

Patios.

Planned and reactive maintenance.

Garden clearance.

Fence work.

Painting.

Insurance contracts.

We cover Dorset, Hampshire and surrounding areas.

Fully insured.

Mob; 07769890695.

Email; colsanenquiries@yahoo.co.uk



A new challenge!



Are you looking for a new challenge and can give an hour or two of your time?

Tolpuddle Old Chapel Trust is looking for enthusiastic volunteers who can make a contribution to our continued work to preserve a unique and historic building, as well as provide a new amenity for the village and surrounding areas.

A wide range of opportunities are available – stewarding, supporting educational visits, fund-raising, maintenance, planning and organising events, finance.

- No specific experience required
- Training offered
- Work as part of a team
- Meet new people
- Learn about and gain experience of the heritage sector

Bring a friend or two!

Interested? Drop into the Tolpuddle Old Chapel or email deliverymanager@tolpuddleoldchapeltrust.org



Tolpuddle Old Chapel



We are now open to visitors

every Monday and Thursday morning
from 10:00am – 12:00pm

Come and find out about our tangible link to the Tolpuddle Martyrs.

Find out about the previous lives of the Chapel.

Come and sit for a while in the peace and quiet of this historic place.

Entry is FREE

info@tolpuddleoldchapeltrust.org
www.tolpuddleoldchapeltrust.org



Registered Company Number: 200703 Registered Charity Number: 112874



Christmas Wreath
Workshop



at Tolpuddle Old Chapel

Saturday 9 December 2023

10:30am – 1:00pm

Cost £20 to cover materials

Come and make a beautiful, seasonal Christmas wreath with Liz White, experienced flower arranger.

- All levels of experience are welcome.
- Guidance will be given for beginners.
- All resources needed will be made available.

To book your place, please email: deliverymanager@tolpuddleoldchapeltrust.org



Dorset Button Making
at The Old Chapel, Tolpuddle



Do you know your cross-wheel from your Singleton,
your Grindle from your Knob?

Learn to make some of these traditional Dorset buttons at our workshops run by experienced embroiderer and Dorset button maker, Ros Atkins.

Saturday 7 October 2023 10:30 – 12:00
Basic Dorset Cross Wheel Button (Introduction, suitable for beginners)
Cost £25

Saturday 18 November 2023 10:30 – 12:30
Cross Wheel Development including colour, patterns and beads.
Follow-on workshop from Basic Dorset Cross Wheel. Cost £25

Saturday 2 December 2023 10:30 – 12:30
Dorset Button Making Christmas Decoration
Suitable for all. Cost £25

All materials and equipment will be provided.

To book your place on one or more workshops, please go to Ros' Folksey site at <https://folksey.com/shops/RosalindAtkins>

Did you know?
Dorset buttons have been hand-made locally since the early 17th century, the craft starting in Shaftesbury, north Dorset. It was a cottage industry that made an important contribution to the Dorset rural economy with top quality buttons sold in London and exported. Dorset buttons were traditionally made on horn.
[Find out more about Ros and her crafts at www.rosatkinsmakingdorsetbuttons.co.uk](http://www.rosatkinsmakingdorsetbuttons.co.uk)

info@tolpuddleoldchapeltrust.org
www.tolpuddleoldchapeltrust.org



Registered Company Number: 200703 Registered Charity Number: 112874

Services in the Benefice

3rd December - Advent Sunday

Psalm 80.1-7.16-18; Isaiah 64.1-9; Mark 13.24-37

9.30am	Parish Communion	Tolpuddle
9.30am	Milborne Praise	Milborne
11.00am	Parish Communion	Puddletown
11.00am	BCP Morning Prayer	Dewlish

10th December - Advent 2

Psalm 85.1-2,8-13; Isaiah 40.1-11; Mark 1.1-8

9.30am	Parish Communion	Milborne
11.00am	Puddletown Praise	Puddletown
11.00am	Parish Communion	Dewlish
4.00pm	Bubble Church NEW	Puddletown V Hall
5.30pm	Carol Service	Tolpuddle

WEDNESDAY 13th December

9.30am	St Mary's CE Middle School Christmas Service	Puddletown
11.00am	St Mary's CE Middle School Christmas Service	Puddletown
2.00am	Milborne First School Christmas Service	Milborne

THURSDAY 14th December

2.00pm	Puddletown CE First School Carol Service	Puddletown
--------	--	------------

SATURDAY 16th December

6.00pm	Candlelit Carol Service	Milborne
--------	-------------------------	----------

17th December - Advent 3

Psalm 126; Isaiah 61.1-4,8-11; John 1.6-8,19-28

9.30am	Parish Communion	Tolpuddle
9.30am	Worship in Stillness	Milborne
11.00am	Carol Service	Dewlish
6.00pm	Carol Service	Puddletown

MORNING PRAYERS (Mon. – Thurs. 8.30 a.m.; Sat. 9.00 a.m.)

On Zoom, please contact Sarah Hillman (sarah.c.hillman@outlook.com) for the link (Please note that the calendar of services may be subject to change)

Services in the Benefice

24th December - Advent 4/CHRISTMAS EVE

Psalm 89.1-4,19-26; 2 Samuel 7.1-11,16; Luke 1.26-38 - Advent 4

Psalm 98; Hebrews 1.1-4; John 1.1-14 – Christmas Eve Services

9.30am	Parish Communion	Tolpuddle
3.30pm	Crib Service	Tolpuddle
5.00pm	Crib Service	Puddletown
10.00pm	Christmas Eve Holy Communion	Milborne
11.30pm	Midnight Mass	Puddletown

MONDAY 25th December - CHRISTMAS DAY

Psalm 96; Isaiah 9.2-7; Luke 2.1-20 - Holy Communion

Part or all of Luke 2.1-20; Other suitable reading if required - Non HC

9.00am	Christmas Holy Communion	Dewlish
10.15am	Christmas Praise	Milborne
11.15am	Christmas Praise	Puddletown

31st December - Christmas 1

Psalm 148; Isaiah 61.10-62.3; Luke 2.22-40

11.00am	United Benefice Holy Communion	Puddletown
---------	--------------------------------	------------





MAIDEN CASTLE HOUSE

A Care South home for
residential and dementia care

As voted for by residents in our
care, their families and friends



9.8/10 – April 2023

“ My grandmother is in great hands – she
loves it at Maiden Castle House. We were
so lucky to find a perfect care home. ”

A real review taken from carehome.co.uk

Contact us today to see how we can help
create a new home for you or a loved one



In the heart of
your community



01305 237652 | care-south.co.uk

Maiden Castle House
12-14 Gloucester Road
Dorchester | DT1 2NJ



Care South

Care South is a not-for-profit charity.
Registered Charity No. 1014697

It's the care that counts.