

# Parish Magazine

Serving the Church Communities of Puddletown, Tolpuddle, Milborne St Andrew  
and Dewlish

NOVEMBER 2023

£1



# BURROW



Wastewater Treatment Plant Installations for Owners of Septic Tanks

## Septic Tank Owner?

New laws mean that you may need to update your system to a wastewater treatment plant to stop your septic tank polluting the environment.

Please contact us to arrange a free assessment visit.

01935 507 508

[burrow-environmental.com](http://burrow-environmental.com)



**hklaw**

## We're there when it matters

When going through a relationship breakdown, we will help you understand your options to make informed decisions.

- Divorce
- Financial Settlements
- Child Custody
- Cohabitation Agreements
- Prenuptial Agreements

[hklaw.uk](http://hklaw.uk)

A Dorchester T 01305 251007  
E [dorchester@hklaw.uk](mailto:dorchester@hklaw.uk)

Contact Details		
<b>Editor</b>	<b>The Revd Sarah Hillman</b>	<b>puddletownparishmagazine@gmail.com</b>
Advertising Manager	Pam Fleetwood	puddletownparishmagads@gmail.com
Dewlish Editor	Geoff Bull	01258 837 316
Milborne Editor	John Wright	01258 839 090
Puddletown Editor	Emma Hughes	puddletownparishmagazine@gmail.com
Tolpuddle Editor	Marion Bishop	01305 848 427 tolpuddleparishmagazine@gmail.com
Distribution Co-ordinator	Jan O'Mara	01305 848 551
Tolpuddle Distribution	Liz Gould	01305 848 464

Annual Advertising Rates to end December 2023 (Sizes are cm)		
Eighth Page - (6.00 x 4.40)	£53.00	Half Page - (12.26 x 9.00) - £143.00
Quarter Page - (6.00 x 9.00)(P) (12.26 x 4.20)(L)	£78.00	Whole Page - (12.26 x 18.25) - £195.00

The Editor's decision is final. All items for publication must include name and contact number of the author. Opinions expressed are not necessarily those of the church or the magazine. Advertisers are neither vetted nor endorsed by the Parish Magazine.

Please mention the Puddletown Parish Magazine when responding to advertisers. For magazines by post contact the Distributors as shown above.

Published by the Parish Magazine, St Mary's Church, The Square, Puddletown, Dorchester DT2 8SL.

**Copy deadline for the December magazine is 3rd November 2023**

**Front Cover Photos: Remembrance 2022**

*Handcrafted Soap, Skin Care,  
Haircare & Dog Soap  
made in rural Tolpuddle*



*Made using quality natural ingredients  
Plastic free packaging*

*All recipes certified by a cosmetic chemist*

- |                                |                               |
|--------------------------------|-------------------------------|
| Handcrafted Soaps              | Shampoo & Conditioner Bars    |
| Himalayan Pink Salt Bath Soaks | Shaving Soaps                 |
| Body Scrubs                    | Lip Balms                     |
| Hand & Body Creams             | Scented & Unscented Dog Soaps |

At home parties on request please email for availability



hello@pidelahouse.co.uk  
www.pidelahouse.co.uk



# Rosemary's Cards

**EXCEPTIONAL QUALITY  
BEAUTIFUL CARDS, GIFT WRAP AND CRAFT KITS**

**Quality stationery items for up to 50% less  
than high street prices.**

**ROSEMARY BUCK  
3 HIGH STREET, PUDDLETOWN  
DORSET DT2 8RT**

**Tel: 01305 848575  
Email: rbuck88.rb@gmail.com**

## WOODS FUNERAL SERVICES

Award winning care and service since 1878



### *Independent Funeral Directors*

- *Memorial Specialist*
- *24 Hour Personal Service*
- *Prepaid Funeral Plans*



**Pauline J Guy** Funeral Director, Dip FD, MBIFD  
**Becci Wiles** Funeral Director

Visit us at: 11a Icen Way, Dorchester, Dorset, DT1 1EW  
Call us on: 01305 250425 Fax: 01305 250625  
Email: enquiries@woodsfuneralservices.co.uk  
Website: www.woodsfuneralservices.co.uk





## Telling Stories

The winter months have always been a time for storytelling. We can imagine people long ago gathering round fires and creating a warm and glowing atmosphere in the midst of the deep and dark winter nights, And even now in our twenty-first century, story plays an important role in the winter, albeit often played out on the television rather than through a simple storyteller with his or her tale.

November is a month for telling stories. We have All Saints' Day, where Christians remind themselves of the disciples of the past who have made a real difference to those around them because of the way they lived out their faith. Then there is All Souls' Day when we remember the faithful departed, often calling to mind those whom we have loved but see no longer. The story of Guy Fawkes is remembered on 5<sup>th</sup>, and of course November is the month for the Remembrance Season where we retell horrific and heroic stories from wartime years.

We also remember this year the 60<sup>th</sup> anniversary of one of the greatest Christian storytellers of the 20<sup>th</sup> century – C. S. Lewis. Few people will be unfamiliar with the Narnia stories.

Stories are powerful – little wonder that Jesus used many of them to convey his teaching. Story-telling is an evocative medium which connects with people and their imaginations. Stories provide a way of truth-telling, but also allow for different perspectives of the same events to be told. Every human being is different and will therefore experience things in a different way from everyone else. One way we can begin to understand our brothers and sisters more deeply is by listening to their stories.

When did you last feel that your story was heard? What story would you like to tell? Whom do you want to listen?

The story of God interacting with the world is a story that began at the start of time and continues today. It's a story that we are writing daily. As we look back at stories past this month of November, let us reflect on the story that we too are writing.

Some of us are good with words – an obvious tool for telling tales, but we can ensure that the stories continue not just through words, but also through the other gifts we have such as art and other creative modes. And our actions to can often speak so much louder than words.

*With best wishes*  
*Sarah*

**read woodruff**  
chartered accountants



**Practical accountancy and  
taxation advice  
free initial consultation**

**[www.readwoodruff.com](http://www.readwoodruff.com)  
online information and advice**

24 Cornwall Road DORCHESTER Dorset DT1 1RX  
Telephone 01305 265544  
e-mail [advice@readwoodruff.com](mailto:advice@readwoodruff.com)



## Clox On Time

69 Monmouth Road  
Dorchester. DT1 2DE  
01305 250442  
[www.cloxontime.co.uk](http://www.cloxontime.co.uk)

**Clox On Time** is a family run

business carrying out servicing, repairs and restoration to all types of clocks and time pieces. We sell a varied selection of clocks and watches. We are stockiest for Royal London, Lorus (made by Seiko) and Limit. We have a small selection of Timex & Cannibal watches. Batteries and straps fitted, usually while you wait. Feel free to ring Graham or Debbie for any advise or estimates. Please mention the magazine.

The following announcement was made in our churches on Sunday 8<sup>th</sup> October.

It is with sadness that I have to announce that the Revd Maggie Crosbie will be leaving our benefice between now and Christmas to continue her curacy in the parishes of the Shaftesbury Team ministry. This is because the diocese has found her housing more suitable to her needs; unfortunately it is too far from here for her to be able to commute. We wish Maggie all the best for her future training and ministry, and thank her for all that she has done here. Please pray for her and for her new training incumbent and parishes. Bishop Stephen of Salisbury thanks everyone in the benefice for the part they have played in Maggie's training and ministry.

*The Revd Sarah Hillman*



**Bubble Church** - A brand new service for young children and their families will commence at 4pm on Sunday 10th December in Puddletown Village Hall. Please keep a look out for more information on Facebook over the next month.

**There will be a  
Service of Remembrance and Thanksgiving  
For those who have died  
3.00pm  
Sunday 5th November  
At St Andrew's church, Milborne  
Followed by tea & cake**



**Come and light a candle in memory of a loved one you have lost**

If you would like someone remembered at the service, please contact  
Sarah Hillman on 01305 848784 or [sarah.c.hillman@outlook.com](mailto:sarah.c.hillman@outlook.com)



# T TAYLORS

ACCOUNTANTS

Chartered Accountants in Puddletown.

High quality accountancy delivered  
with a personal touch.

For all your accounts and tax  
requirements.

Contact us for competitive fixed price  
work, undertaken for a full range of  
services, including self assessment,  
VAT, payroll and company accounts.

01305 848779

[www.taylorsaccountants.co.uk](http://www.taylorsaccountants.co.uk)



## JASPERS HAIR SALON



*Your friendly local salon  
providing exceptional results*

Check out our new website-  
**[www.jaspershairsalon.co.uk](http://www.jaspershairsalon.co.uk)**

### OPENING TIMES

**Tuesday: 9.00am-4.00pm**  
**Wednesday: 9.00am-6.00pm**  
**Thursday: 9.00am-5.00pm**  
**Friday: 9.00am-7.00pm**  
**Saturday: 8.30am-1.30pm**

**Don't forget to ask about our Loyalty  
cards and special offers**

01300 348 569

Main Street, Piddletrenthide, DT2 7QL

## ALEX FROST & JOHN BUTLER MASTER THATCHERS



PROMPT ATTENTION  
HELPFUL ADVICE

5 Streetway Lane  
Cheselbourne, DT2 7NU  
01258 837538

[www.jbmasterthatcher.co.uk](http://www.jbmasterthatcher.co.uk)

## DOMESTIC REPAIRS

WASHING  
MACHINES  
FRIDGES  
DISHWASHERS

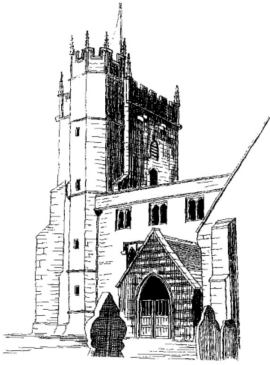
NO CALLOUT CHARGE  
PROMPT  
COMPETITIVE  
SERVICE  
7 DAYS A  
WEEK  
24 HOURS A DAY

TUMBLE  
DRYERS  
COOKERS  
FREEZERS

Tel IAN COOMBS on  
07572 918745



## St. Mary's Church Events - November



**Pop-in Coffee Mornings** in the Church Room are every Thursday from 10am to 12noon. Everyone (of any age) is welcome. Good coffee and delicious cakes and/or biscuits are always on offer. Come and join us for a sociable hour or two.

**Warm Space** This continues every Wednesday from 10am to 3pm in the Church room.

**Rosemary's Card Stall** will be at two 'pop-in' coffee mornings in November. Thursdays

November 9<sup>th</sup> and November 30<sup>th</sup> The cards are good quality and very reasonably priced. Do come along and have a look. Through the sale of her cards Rosemary is helping to support the church room.

**Prayer Group** There has been a slight change to the time that the Benefice prayer group meets on Tuesdays in Puddletown Church Room. It will now be from 10.30 until 11.30am. All are welcome.

**Childrens Society Boxes** These will be emptied and the money counted on 11<sup>th</sup> November after the service. A speaker from the society will talk to us in place of a sermon.

**Craft Group** this continues on Thursday November 9<sup>th</sup> at 12.30. Please bring your own scissors. If you would like to book your place then please contact Margaret [margaretmary227@gmail.com](mailto:margaretmary227@gmail.com) or 01305 849332

**The Village Lunch** will be on Monday 13<sup>th</sup> November from 12noon to 1.30pm We shall be serving sausage casserole followed by the usual delicious puddings. A vegetarian dish will also be served each month. This must be booked in advance. If you haven't yet booked your place then please contact Sheila on 849193 or Jean on 848211.

**A Night of Sixties Song and Dance** You will already have seen this advertised in last month's magazine and around the village, so dust off your dancing shoes and come and join us for a fun evening – Friday November 3<sup>rd</sup> @ 7.30pm in the Village Hall. Tickets are £10 from Cynthia 01305 848043 or Bob 07770 575295

### Church Mouse Stock

Piddle Duck APRON (blue or pink) £15

River Piddle & Duck TEA TOWEL £4.50

Picture of St Mary's Church £2

Duck cards (pack of 4) £5

Single cards £1.40

Please contact Caroline Cox on 01305 848514 if you wish to purchase any items.

**elite**  
**FOOTCARE**  
Dorset

Susannah DuValle SAC DIP RFHP

**mobile  
foot health  
practitioner**

**Do you suffer  
discomfort from:**

Nail Cutting  
*(including diabetic feet)*

Corns

Callus

Athletes Foot

Ingrowing Toe Nails

Thickened Nails

Fungal Nails

Cracked Heels

Hard Skin Removal

Verruca

**Book your home  
appointment  
TODAY!**

**07795 977648**  
susannah@elitefootcare.co.uk



<b>St Mary's Puddletown</b>		
<b>Intercessors</b>		<b>Scripture Readers</b>
5th Nov	Bob Todd	Paul Fleetwood
12th Nov	Puddletown Praise Team	
19th Nov	Dawn Loveless	Judy Bumby
26th Nov	Cynthia Metcalfe	Ursula Pomeroy & Geoff Hawkins
<b>Charitable Giving 2023</b>		
Lent		Toilet Twinning
Mothering Sunday		Women's Refuge
Easter Day		The Salvation Army (Homeless)
Harvest		Water Aid
Christmas		The Children's Society

## **BENEFICE REGISTERS**

### **Baptism**

21st July	Finley Jack Roberts	Tolpuddle
1st October	Betty Grace Turnbull Vickery	Tolpuddle

### **Marriages**

14th August	Martin McLaren and Emma Matthews	Milborne
19th August	Christopher Rice and Susan Burrows	Dewlish
26th August	Stuart Fox and Jessica Norman	Puddletown
16th Sept	Jack Hoyland and Tatiana Pole-Carew	Puddletown
30th Sept	Ben Cox and Sophie Zealand	Puddletown

### **Funerals**

3rd August	Melanie White	Puddletown
------------	---------------	------------

# JURASSIC COMPUTERS

*The incredibly friendly  
computer people*



Call Darrell Hounsome or Lee Thompson for jargon free, patient, friendly computer help for home and business users.

**Whatever your computer problem, call us... we can help!**

## 01305 755668

**Repairs • Servicing • New PCs & Laptops • Training • Virus Removal**

*Are you ready for a new PC or Laptop? If so, come and see us. We offer a complete service and will guide you through the whole process. We can supply, update, set-up and then transfer your documents/emails from your old system. We will give you the benefit of our combined 37 years experience gained whilst working for Kingston Maurward College in Dorchester.*

Email: [info@jurassic-computers.co.uk](mailto:info@jurassic-computers.co.uk) ~ Website: [www.jurassic-computers.co.uk](http://www.jurassic-computers.co.uk)  
PROSPECT HOUSE, PEVERELL AVENUE EAST, POUNDBURY, DORCHESTER, DORSET DT1 3WE

### PURBECKAERIALS.COM

**SAME DAY SERVICE**    **SKY WIFI**    **OAP DISCOUNT**

**TV- AERIALS**

**SATELLITE**

**FRESAT**

**CALL 07568456962**

**JOSH 01929553705**

**WIFI HOME HELP**



**Stockley Builders Ltd**  
**General Build & Maintenance**

**Tel: 01305 854500**

[office@stockleybuilders.co.uk](mailto:office@stockleybuilders.co.uk)  
[www.stockleybuilders.co.uk](http://www.stockleybuilders.co.uk)

### Stitchinghouse Design

Curtains & Interior Design

Beautiful Fabrics

Blinds

Interior design showroom  
workshop direct prices

Monday ~ Friday 9 – 4  
Saturday 9-12

3 Pummery Square, Poundbury,

**01305 250782**

**[www.stitchinghouse.co.uk](http://www.stitchinghouse.co.uk)**



**ST MARY'S CHURCH  
CHRISTMAS FAIR  
&  
COFFEE MORNING**

SATURDAY 9TH DECEMBER

10AM - 12NOON

PUDDLETOWN VILLAGE HALL

ENTRANCE £2

TO INCLUDE COFFEE & BISCUITS

**HOMEMADE CAKES, CHRISTMAS WREATHS  
CHURCH MOUSE CARDS & PUDDLE DUCKS APRONS**

**CRAFT STALLS INCLUDING**

**ROSEMARY'S CARDS**

**THE BODY SHOP**

**WORKS BY LOCAL ARTISTS**

**TOMBOLA, RAFFLE, GAMES**

**LIVE MUSIC BY**

**PUDDLETOWN UKULELE GROUP**



## Hustings Electrical Ltd

New Services - Traditional Values

[www.hustingselectrical.com](http://www.hustingselectrical.com)

[office@hustingselectrical.com](mailto:office@hustingselectrical.com)

Office: 01258 837385

Mobile: 07966 403 965 or 07549 380 217

Call or email us with your requirements

### Electrical Contractors Since 1980

Agricultural – Commerical – Industrial - Bespoke Panel Building & Controls  
Domestic – Equestrian – Intruder - SMS & Programmable Logic Automation  
Alarms – Emergency Lighting – Testing - Computer Infrastructure Services  
Inspection – Control Systems & Panels - Data Recovery – Firewall Security  
CCTV – Data Cabling and Computing - Custom Builds & Repairs  
Malware Rescue – Security & Access Control Systems  
Website & Web Applications - IP – CCTV

No job too small, Friendly, Reliable & Trustworthy Team.

Call our Office for a Free No Obligation Quote

**Watercress Cottage, Tindeton, Dorchester DT2 8QP**



Piddle Valley Vets is a veterinary surgery where we look after every aspect of your pet's health and welfare. We match the highest quality and most up-to-date clinical techniques with a caring, compassionate and open environment.

The practice is located in the old GP Surgery in the picturesque village of Puddletown. There is plenty of on-site parking and the building has been extensively refurbished and then equipped with facilities to house animals of many different species in the most comfortable and relaxing way possible within a clean, clinical environment.

Telephone 01305 848820

[www.piddlevallevets.co.uk](http://www.piddlevallevets.co.uk)

“Keeping Your Pets Well”

David Holah BVSc CertZooMed MRCVS

# Month on the Farm

Since writing last month's bit this year's harvest was at long last finished in some sunny hot days in September with crops stored or sold and straw bales now in the barns, just a few very late silage bales to bring home from outlying rented fields, some near Bere Regis and the remaining black wrapped bales from the water meadows near Grey's Bridge outside Dorchester.

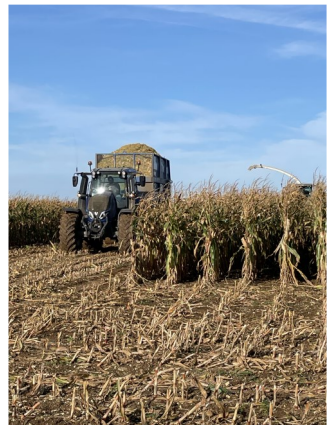


Although harvest was long and stop start with the inclement weather, cattle thrived with grass growing for much on the summer and we have had good prices through the markets for all the big store cattle sold, unfortunately cereal prices have dropped, these are much more set through the global markets and things beyond our control as over seas affect the prices here and with the large drop in pig and poultry numbers whose main diet is cereals, consequently affects the home market prices!



This year we grew some maize on some on of our ground for another farmer as it's a break crop and we were having problems with grass weeds and with the different crop it gave us time to cultivate and spray with different chemistry to control the problem. This did unable us through to spread farmyard manure over the field and an excellent maize crop was grown. Although this was grown on contract for someone else, farmers during late September and early October are harvesting maize using a forager which cuts and chops up the whole maize plant and squash the kernels, which is then clamped

and stored for winter feed, some which we see heading towards Dorchester is grown for feeding the Anaerobic Biogigester at Rainbarrow Farm which produces power for the people of Poundbury and compost for gardeners.





# HARDY TREE

## SURGEONS

EST. 1988

### The Professional Arboricultural Service

Specialising in Tree Surgery, Landscaping Garden Management & Utilities  
Throughout out the South

- Tree Care for Residential, Commercial, Forestry, Agricultural & Estates
- Tree Surveys, Inspections, Reports & Consultancy
- Highways, Roads & Street Clearance
- Dismantling & Felling
- Pollarding & Veteran Tree Management
- Reductions, Thinning, Pruning & Reshaping
- Crown Lifting & Dead Wooding
- Site Clearance, Garden & Hedge Maintenance
- Tree & Hedge Planting
- Stump Removal
- Logs & Wood Chippings
- TPO & Conservation Applications
- Fully Insured – £10 million Public Indemnity
- Fully Qualified – NPTC
- Tree Works to BSI 3998 : 2010 Standards
- Friendly, Reliable & Efficient Service
- Free Quotations



**24 Hour Emergency Call Out**

**Tel. 01300 341471 ~ Mob. 07774 477435**

**[www.hardytrees.co.uk](http://www.hardytrees.co.uk)**

The Office @ Unit 1 Charminster Farm Industrial Estate, Wanchard Lane, Charminster, Dorchester, Dorset DT2 9RP

email : [nickie@hardytrees.co.uk](mailto:nickie@hardytrees.co.uk)



Preparations are under way to start bedding up the sheds to bring some in for the winter, others have started the mustard and are eating off green cover crops which as in previous years is why silage bales are lined up across the fields in readiness for the daily move of cattle and fencing. Although as we write this the daytime temperatures are still in the twenties, autumn and winter will soon be upon us with whatever they bring!

*Wakely Cox*

*9th October 2023*



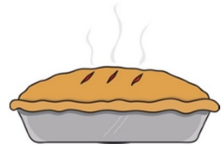
## **Puddletown Village Lunch**



**Monday 13th November**

**Served at 12.00noon**

**Puddletown Village Hall**



**This month's special is sausage casserole  
followed by the usual yummy puddings**

**£8.00**

**Please book in advance:**

**Sheila: 849193; Jean: 848211**

# TOLPUDDLE GARDEN SERVICES

For : Garden Restoration  
Re-Planting and Maintenance  
All Aspects of your Garden  
Undertaken

Tel: 07789 595110

Email:

Tolpuddlegardeservices@hotmail.com



# The Spring Grove Forge Ltd

## WROUGHT IRONWORK



*Specialising in :*

*ornamental ironwork  
plain ironwork,  
fire escapes and  
steel fabrications*

### PUDDLETOWN 848328

COOMBE ROAD, PUDDLETOWN, NR. DORCHESTER

## West Dorset Mobile Foot Clinic



**Unable to reach or cut your own Nails?  
Foot Pain when you walk?**

Then why not have Professional treatment within the comfort of your own home!

- Nail Cutting, including Diabetic Feet
- Thickened Nails
- Ingrowing Nails
- Fungal Nails
- Corns & Calluses
- Cracked Heels
- Hard Skin Removal



**Book your home appointment TODAY!**

**07903 722542** Roy Fox  
SAC Dip FHT, SAC Dip FHP, MRFP

**07712 525058** Christine Fox  
SAC Dip FHT, SAC Dip FHP, MRFP

wdmfc@icloud.com

[www.westdorsetmobilefootclinic.com](http://www.westdorsetmobilefootclinic.com)



Knighton  
Countryside  
Management

**Need a tree surgeon?  
Give us a call on**

WOODLAND • ECOLOGY • LANDSCAPE

**01305 848881**

*Our services include:*

- Stump removal and wood chipping
- Tree surgery
- Reductions and felling
- Emergency tree work
- Tree risk assessments
- Hedge Laying and fencing
- Stump removal and wood chipping
- Log & woodchip delivered



*Fully qualified and insured staff*

*All jobs undertaken both large and small*

Friendly advice, free no obligation visits and quotes

**Contact us now on: 01305 848881**



[office@knightoncountryside.com](mailto:office@knightoncountryside.com)

[www.knightoncountryside.com](http://www.knightoncountryside.com)

Unit 37, Enterprise Park  
Piddlehinton DT2 7UA

## Puddletown NeighbourCar urgently needs your help.

Have you ever considered how you would manage if you couldn't drive yourself to your doctor, dentist, optician, or hospital appointments?

The Puddletown NeighbourCar service is a group of volunteer drivers who can be called upon to drive, the patients of Puddletown Surgery, to health-related appointments.

If you have a car and an hour or two to spare once or twice a month the Puddletown NeighbourCar would love to hear from you. This is an entirely voluntary service which started in 2010 but without some additional drivers it is in danger of folding.

Volunteers, are helpful neighbours who commit to nothing; you can always say you are busy when we call. Fuel costs care paid but the real reward is the gratitude of our clients who, without transport, would struggle to attend vital healthcare appointments.

For more information please email [theresamgill@icloud.com](mailto:theresamgill@icloud.com) or telephone 07785727906



## SAVE THE DATES - IT'S **BINGO** TIME!

*This Autumn sees the return of the cricket clubs annual bingo fundraisers! With hundreds of prizes to be won, and a fun filled evening for all, be sure to come and join us!*

### DATES

3	29	45	56	68
1	19	43	50	72
11	25	37	49	61
9	23	31	58	63
4	27	42	54	71

Saturday 28th October 2023  
Saturday 16th December 2023  
Saturday 3rd February 2024

3	29	45	56	68
1	19	43	50	72
11	25	37	49	61
9	23	31	58	63
4	27	42	54	71

**DOORS OPEN AT 6PM**  
**EYES DOWN AT 7:30PM**

*There will be lots of tasty treats, both sweet and savoury, as well as a bar for alcoholic and soft drinks.*

**PLEASE NOTE, THESE EVENTS ARE CASH ONLY!**

*Bingo books and dabbers can be purchased in the night!*

# Crossways Travel

*Executive Coach Travel With A Personal Touch*

**01305 851697**

**COME AND EXPERIENCES COACH TOURS WITH A DIFFERENCE**  
**DAY EXCURSIONS AND HOLIDAY TOURS ON COACH**  
picking up in PUDDLETOWN, TOLPUDDLE and DORCHESTER.



## **LATE AVAILABILITY**

### **CHRISTMAS MARKETS ON THE RHINE**

**November 30<sup>th</sup> 6 days £749**

This is the tour to put you in the mood for Christmas. We will be staying in the historical Old Town of Rudesheim, visiting Koblenz and Wiesbaden Christmas markets and take the spectacular train journey along the River Rhein. For a fabulous finish to the tour, we will be visiting a Lindt Chocolate Factory Shop on our way back to Calais. Why not take this opportunity to get your unique Christmas presents to surprise the family or treat yourself to something extra special this festive period.

### **HAPPY NEW YEAR IN WALES**

**December 28<sup>th</sup> 6 days £795**

There is no better way to see in the New Year than joining us for a fabulous tour to South Wales. We have included full board throughout, a 4-course gala dinner and sherry reception on New Years Eve, festive entertainment throughout and even a visit to a pantomime. We will visit Bristol, Cardiff, Maesteg, Mumbles and even a drive along the beautiful Glamorgan Heritage Coast. We will be staying by the lovely Seabank hotel in Porthcawl, right on the seafront.

**FOR YOUR COPY OF OUR HOLIDAY BROCHURE CALL US ON**

**01305 851697 [www.crosswaystravel.co.uk](http://www.crosswaystravel.co.uk)**

# THE PUDDLETOWN SOCIETY

Forthcoming meeting to be held in the Church Room

Wednesday 8 November

## THE RISE AND DECLINE OF DRUCE FARM ROMAN VILLA

An update on the excavations carried out between  
2012 and 2018  
and publication of the Report  
by  
**Lilian Ladle**

St Mary's Church Room 7-30 pm.  
Admission: Members Free, Visitors £5

Wednesday 13 December

## A SLIGHTLY ALTERNATIVE CHRISTMAS

Poems, songs and readings, old and new  
presented by  
**Bonny Sartin**  
(retired member of the Yetties)

St Mary's Church Room 7.30 pm  
Admission: Members Free, Visitors £5

The Children's Society boxes will be emptied following the 11am service on the 18th November during which Paul Gray from the Society will be giving an interesting talk about some of the many works of the society and he is very much looking forward to coming back to St Mary's church room.

After this, my tenth year, I am unable to continue as Box Coordinator and so am hoping that someone will be able to step into my shoes. Should a successor not materialise though, there are other ways that donations can continue to go to the society such as online donations, one off or monthly donations or by way of an online Giving page. It would be preferable though, if box donations were to continue.

Should you, or anyone that you can recommend, wish to have a chat with myself regarding being the new Box Coordinator do please contact me either in person or on: [dloveless6013@yahoo.com](mailto:dloveless6013@yahoo.com) 07980828776 or 01305849534

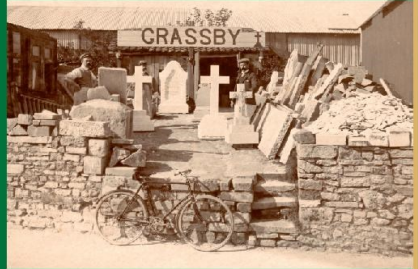
# GRASSBY & SONS LTD



Proud to have served the local community since  
**1861**

**FUNERAL SERVICE**  
8 Princes St, Dorchester

**MEMORIAL MASONS**  
Dorchester Road, Grimstone



[www.grassby-funeral.co.uk](http://www.grassby-funeral.co.uk) Tel: (01305) 262338  
[www.grassby-stone.co.uk](http://www.grassby-stone.co.uk) Tel: (01305) 269678



## **P.N. Gray Electrical** *Limited*

**A RELIABLE, AFFORDABLE AND A FAST RESPONSE ELECTRICAL SERVICE IN DORSET AND SURROUNDING COUNTIES**

**AGRICULTURAL - INDUSTRIAL - COMMERCIAL & DOMESTIC INSTALLATIONS**



**ALL ELECTRICAL WORK UNDERTAKEN FROM MINOR WORKS TO INSTALLATIONS. THIS INCLUDES INSPECTING AND TESTING PROPERTIES, UNDERTAKE REWIRES AND ANY GENERAL MAINTENANCE.**

**PLEASE CONTACT US BY PHONE OR EMAIL FOR A FREE QUOTATION OR SOME FRIENDLY ADVICE:**




**TEL: 01258-837354  
MOB: 07774-838851**

**EMAIL: [pngrayelectrical@btinternet.com](mailto:pngrayelectrical@btinternet.com)  
[www.pngrayelectrical.co.uk](http://www.pngrayelectrical.co.uk)**



# Puddletown Weather - September 2023

*Site location (GPS): N 50° 44.937' W 2° 20.862' Altitude 88.39m  
(somewhat sheltered from easterly winds)*

<b>September 2023</b>		
	Rainfall for the month	48.90 mm
	Cumulative for the year	619.80 mm
	2022 Rainfall for the month	97.80 mm
	2022 Cumulative for the year	380.00 mm
	Temperatures	Max. 32.20° C Min. 5.40° C
	2022	Max. 24.90° C Min. 3.70° C
	Maximum wind speed	20.60 mph
	2022	17.40 mph



**Warm Space!**

**Every Wednesday in Puddletown Church Room.**

**From 10am until 3pm**

**Refreshments (tea, coffee, and soup & a roll) available.**

**Bring your knitting or craft... Come and do a jigsaw... Read a book...**

**All welcome!**



# Greenways Tree Care



Felling  
Reductions  
Pruning  
Stump grinding  
Hedges  
Lawn maintenance  
Turfing  
Strimming  
Garden fencing

Tim Moore - 01258 837124  
- 07968 154708

## & Garden Services

Free estimates and Advice  
20 years experience

**(Fully Insured)**

Dewlish, Dorchester  
Chippings and Compost delivered



# MONTAHUE FINANCIAL

*Offering a professional, experienced and personalised service  
for all your borrowing and protection needs.*

- Later Life Lending Specialist Endorsed by the Equity Release Council
- Wide Range of Mortgage Lenders
- Life and Critical Illness Protection Plans



**Call Hugh on 01305 815901    email [hugh@montahuefinancial.co.uk](mailto:hugh@montahuefinancial.co.uk)  
or visit [www.montahuefinancial.co.uk](http://www.montahuefinancial.co.uk)**

Montahue Financial is an Appointed Representative of Mortgage Intelligence, which is authorised and regulated by the Financial Conduct Authority under number 305330 in respect of mortgage, insurance and consumer credit mediation activities only

## GARY SPRATT

**GARDENS AND WOODLANDS RESTORATION AND MAINTENANCE  
EXPERIENCED. QUALIFIED. INSURED.**

**FRIENDLY RELIABLE SERVICE BY COMPETENT PLANTSMAN.**

Careful and correct pruning of all trees, shrubs, roses and climbers.

Skilled training and tying of wall shrubs, roses and wisterias.

Professional tending of herbaceous borders.

Hedgelaying, pleaching, hedge cutting and renovation.

Coppicing and woodland management.

Wildlife habitat conservation.

**Phone: 01258 837927. Mobile 07929 832244**



# TOWER NEWS

Saturday, 30 September 2023 in 5m (16-1-18 in E)

**120 Reverse Canterbury Pleasure Place**

**Doubles**



1 Nigel Pridmore

2 Tim F Collins

3 Jane Pridmore

4 Stephanie Smith-Cooper

5 Robin Mears (C)

6 Robert Newton

Rung after the Wedding of Sophie Anne Zealand & Benjamin Ralph Cox  
40th Anniversary Year of the DCA

Saturday, 7 October 2023 in 11m (16-1-18 in E)

**240 Grandsire Doubles**

1 Jane Pridmore

2 Janet M Collins

3 Tim F Collins

4 Robin Mears (C)

5 Ashley FE Monck

6 Nigel Pridmore

Rung before the Wedding of Daniel Robertson & Sophy Davies  
40th Anniversary Year of the DCA

## Puddletown Food Bank

Please pass on to anyone you know who might be in need.

There is now a food bank in Puddletown church for the use of people living in the village. (This would include Athelhampton, Burleston & Troytown).

Please feel free to take what you might need, and also donations welcome from all. The food is in some kind of order in the labelled plastic boxes.

They can be found by turning left down the first aisle as you walk through the door.

**When using the foodbank, please think of other people who may need to access it later in the day.**

This food bank is supported by Puddletown First School, Puddletown Surgery, Puddletown Spar Shop, and St Mary's church.



## Choose **GreenThumb** to bring your lawn to life...

We offer seasonal weed and feed treatments from just £15\* that will keep your lawn looking lush, green and weed-free throughout the year.

We also provide beneficial treatments to keep your lawn in tip-top condition:

- ✓ Hollow-tine aeration
- ✓ Scarification
- ✓ Lawn disease management

For your FREE lawn analysis, call today: 0800 0111 222

E: dorchester@greenthumb.co.uk

**GreenThumb**  
LAWN TREATMENT SERVICE

## **Philip Trim** **Contractors**

**ULTIMATE LIQUID & SLURRY SOLUTIONS**

**Liquid Waste Disposal**  
Emptying of septic tanks,  
cesspools, gullies, interceptors,  
grease traps, event & festival hire

**\*Local professional service\***

[www.philiptrimcontractors.com](http://www.philiptrimcontractors.com)

[info@philiptrimcontractors.com](mailto:info@philiptrimcontractors.com)

Chamberlaynes Farm Workshop  
Bere Regis Wareham BH20 7LS



**RING NOW FOR DETAILS**  
**01929 472192**  
**07971 005579**

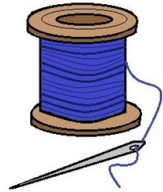


THE PUDDLETOWN BENEFICE FLEX TEAM

INVITE YOU TO A MONTHLY

## CRAFT GROUP

Come and make some **crafts**, enjoy a simple **bread-and-cheese lunch**,  
take time out to **relax**,  
and **chat** to friends, old and new.



THURSDAY LUNCHTIME AT 12.30pm

Next Session on 9th November

IN PUDDLETOWN CHURCH ROOM

Future dates: 30th November, 7th, 14th & 21st December

For further information, contact Margaret Rickard

[margaretmary227@gmail.com](mailto:margaretmary227@gmail.com)

01305 849332

If you wish, you are welcome to bring your own crafts and enjoy the company

# Ernest G Hart Ltd

marquee and event hire specialists

Supplying fine marquees since 1944



For expert advice and friendly service  
please ring us on

# 01258 881047

[www.ernestghart.co.uk](http://www.ernestghart.co.uk)

Unit 1, Milborne Business Centre, Blandford Hill  
Milborne St Andrew, DT11 0HZ



# ockalty

Professional Animal Services  
Qualified veterinary nurse with  
qualifications in agriculture

Offers you a bespoke pet  
service tailored to meet all your  
individual needs

Dog walking      Daily cat visits  
Dog day care      Equine  
Boarding          Small holdings  
Home visits

Other services offered

Contact Gill 07791 567944

Email [info@ockalty.co.uk](mailto:info@ockalty.co.uk)

Website [www.ockalty.co.uk](http://www.ockalty.co.uk)



# KNIGHTON

## Plumbing & Heating

Daniel Dorton

6 Glebe Way, West Knighton

Tel: 01305 853893

Mob: 07837 654921

All aspects of plumbing work from a dripping tap  
to a full central heating installation

Fully qualified, fully insured, all work guaranteed, references available  
High quality work at competitive rates, local plumbing competition winner

24 hour call out with no call out fee, free quotes

10% discount on labour for OAP's



*"Right first time"*  
*"Installing quality into your home"*



<b>CONTACTS PAGE - Please help us keep these pages up to date by notifying us of any changes</b>		
CLERGY	The Revd Sarah Hillman (Vicar)	01305 848 784
	sarah.c.hillman@outlook.com	
LICENSED LAY MINISTER	Margaret Rickard	01305 849332
CHURCHWARDENS	Cynthia Metcalfe (Puddletown)	01305 848 043
	Dawn Loveless (Puddletown)	01305 849 534
	Hilly Cobban (Tolpuddle)	07817 557367
	Jayne Brayshaw (Tolpuddle)	01305 849 314
	Pam Shults (Milborne St Andrew)	01258 837 203
	Tony Fox (Milborne St Andrew)	01258 837 651
	Sue Britton (Dewlish)	01258 837 218
	Jim Burg (Dewlish)	01258 837 466
BENEFICE OFFICE	Emma Hughes	
(www.puddletownbenefice.org)	puddletownbenefice@outlook.com	
<b>PUDDLETOWN CONTACTS</b>		
Alcoholics Anonymous		
Area Parish Council	Alan Sheppard Email:clrashppard@puddletownareaparishcoun cil.gov.uk	07771 98 8574
Area Parish Clerk	Michelle Harrington clerk@puddletownareaparishcouncil.gov.uk	01202 670105
Bell Ringers	Robin Mears	01305 848 021
Children's Society	Dawn Loveless	01305 849534
Church Room	Jane Stanley	01305 848494 07871 169014
Community Café	Katie Weiss puddcommcafe@gmail.com	
COMMUNITY LIBRARY	Run & financed by volunteers	01305 848 506
	puddletownlibrary@gmail.com	
Opening Hours:-	Wednesday: 3.00pm to 5.00pm Friday: 10.00am to 12.00noon Saturday: 10.00am to 12.00noon	
County Councillor	Emma Parker	
Cricket Club	David Stevens	07720 411 952
Cubs, Scouts & Beavers	Barry Thomas www.puddletownscouts.org.uk	01305 852314
Football Club	Steve Brown	07789 821 408
Flower Rota	Heather Mears	01305 848 021
Footpaths & Rights of Way	Julian Hubbuck julian.hubbuck@gmail.com	07881 678 126

<b>CONTACTS PAGE - Please help us keep these pages up to date by notifying us of any changes</b>		
<b>DOCTORS</b>		
Puddletown Surgery Dr J Griffiths, Dr C Burnham & Dr J Bond		01305 848 333
Puddletown Surgery (Dispensary)		01305 849 329
Out of hours medical advice & NHS Direct	Out of hours medical advice & NHS Direct	111
Friends of Puddletown Church	Jill Temple friendsofpuddletownchurch@gmail.com	
Friends of Puddletown Library	Paul Poser	01305 848 176
Gift Aid Co-ordinator	Bob Todd	01305 849 048
Guides, Brownies & Rainbows	Amy Knight	01305 848 602
Gym	Dan Weiss coachdan26@gmail.com	07547 713675
Handbells	Bob Todd	01305 849 048
Mini-Soccer/Youth Football	Jon Palmer	07891 173 999
Neighbourhood Plan	Clerk to PAPC	
PCC Secretary	Emma Hughes	
PCC Treasurer	David Elliott	07776 256537
Pilates (at First School)	Kathy Ashdown	07967 655159
Puddletown CPPP	www.facebook.com/puddletownplaypark	
Pumpkins Toddler Group	Find us on Facebook or Instagram @puddletownpumpkins	
Puddletown Society	John Ridout	01305 848 940
Puddletown Ukulele Group	Bob Watson bobwatson55@hotmail.com	07725 684 400
Recreational Multi Games Area	David Knight	07890 260 320
Recreation Ground Pavilion	Liz Knight	01305 848 380
Royal British Legion (RBL)	S Ridout	01305 848 940
Rugby Club	Ray Stephens puddletownrfc@hotmail.com	07966 412 467
<b>SCHOOLS</b>		
Pre-school	Sharon Brown www.puddletownpreschool.co.uk	01305 849 533
First School (Head of School)	Mrs A Seal www.puddletownfirst.dorset.sch.uk	01305 848 206
St Mary's CE Middle School	Mr Tim Ennion	01305 848 293
Short Mat Bowls		
Village Hall Caretaker/Bookings	Kevin Smith (puddletownvh@gmail.com)	07706 798271

<b>CONTACTS PAGE - Please help us keep these pages up to date by notifying us of any changes</b>		
Village Hall Committee Secretary	Amy Knight	01305 848602
Yoga	Mandy Cooper	07713 477737
Young Farmers (Dorset)		01305 263 947
<b>TOLPUDDLE CONTACTS</b>		
Defibrillator (outside Martyrs Inn)	Clare & Roger Angus	07720 059035 or 01305 848286
Orchard Meadow	Clerk to PAPC	
PCC Secretary	Heather Saunders	
PCC Treasurer	John Taylor	01305 848 552
Physio-Led Pilates	Sam Buxton	samjbuxton31@gmail.com
Pilates	Kathy Ashdown	07967 655159
Tolpuddle Events Committee	Ian Cray	
Tolpuddle Home Group		
Tolpuddle Old Chapel Trust		info@tolpuddleoldchapeltrust.org
Tolpuddle Toddler Group	Maria Palmer	07717 506020
Tolpuddle Village Meeting	Tyra Nozaic Goosen, Clerk.	tolpuddlemeeting@yahoo.com
Tolpuddle Village Show	Jo Austwick	austwickjoanne@gmail.com.
Tolpuddle & Southover Village Website	www.tolpuddlevillage.co.uk	tolpuddlevillagewebsite@gmail.com
Village Hall Bookings Sec.	Jo Austwick	tolpuddlevhinfo@gmail.com
Village Hall Chairman	Peter Walton pdwalton@btinternet.com	01305 848 034
Yoga (Iyengar)	Sue Chapman	01305 848 053
<b>USEFUL &amp; EMERGENCY NUMBERS</b>		
Benefit Enquiry Line		0800 88 22 00
Dorset Community Action	info@dorsetcommunityaction.org.uk	
Dorset County Hospital		01305 251 150
Electricity Failure (Southern Electric)		0800 0727 282
Gas Leak or a smell of gas		0800 111 999
POLICE—Local Officers	PC Moore 0229 & PSCO Alison Donnison 6500	101 or "Contact Us" section on Dorset Police Website

<b>CONTACTS PAGE - Please help us keep these pages up to date by notifying us of any changes</b>		
<b>DEWLISH CONTACTS</b>		
Cricket	Elaine Kellaway	01258 837 696
Ladies Group	Judith Bridgen	01258 837 157
Parish Council	Chris Udens (Chair)	07973 167117
Parish Clerk	Amanda Crocker dewlish@dorset-aptc.gov.uk	
Village Hall (Chair)	Andrew Barnett	07551 839296
Village Hall (Sec)	Alex Carter	01258 837 312
<b>MILBORNE ST ANDREW CONTACTS</b>		
Allotment Society	Joy Robinson	01258 837 661
Archery	Mike Healy	01300 342 134
Badminton	Bruce Dyer	01258 839 117
Bellringers		
Busy Bees Group (Under 5s)	Claire Tudge	07970 734 162
Cribbage	Peter Anthony	01258 837 089
Food & Wine Club	Steve O'Neill	07490 691 121
Gardening Club	Bill Love	01258 837 677
Ladybirds Playgroup	Liz Dyer	01258 839 117
Milborne First School	Michelle Cheeseman (Head)	01258 837 362
Milborne Players	Gren Davis	07876 793 319
Nightsabre Dog Training Group	Natasja Lewis	07896 275 357
Neighbourcar	Nigel Hodder	01258 470 333
Parish Council	Richard MacNair (Chair)	07774 081 551
	Wayne Lewin (Clerk)	07419 136 735
Patient Voice Secretary	Nigel Hodder	07983 013 781
Pilates (at First School)	Claire Barratt	07703 648869
Scout Group	Sam Elliott	07873 762 035
Sports Club	Richard Lock (& Bookings)	01258 837 929
Tap Dancing (Adults)	Kevin Selby	01305 250 386
Tennis - Member's Secretary	Rich Hawker	07983 013 781
Village Hall	Linsey O'Neill (Chair)	07798 720 812
	chair.msavh@gmail.com	
	Susan Poet (Bookings)	07866 313 999
Wednesday Social Club	Sheila Burton	01258 839 033
Women's Institute	Lesley Clarke	01929 471 732
Yoga –at First School (Iyengar)	Sue Chapman	01305 848 053
Yoga –at Village Hall	Angela Johnson	01258 839 060





## St John's Church Tolpuddle November 2023

The year is moving swiftly on and we are now well into Autumn - and what a beautiful time it has been so far with much sunshine and unseasonable warmth. But now as we look towards the end of our year, the church is preparing for Advent, the coming of Jesus, reminding us of new life and the hope that

comes with it. We are all in need of hope at the moment- with the worries of climate change and the sometimes violent disturbance in weather patterns around the world that it has brought, the increase in living costs, which always affects the disadvantaged in society to a greater degree and the increasing aggression shown by some of the power-hungry governments and leaders in the world. Within our community and our own lives, we do our best to reduce plastic, recycle what we can and limit our use of fossil fuels but we pray that our politicians will take more meaningful action to reduce our carbon footprint - in a positive way and not just with vote-winning gimmicks! Regarding the problems caused by rising prices, we are trying to help with our FOOD BANK which is at the back of St John's and available for anyone in need, however short term. There is also information about other help available and a notebook for help-requests - we do monitor this regularly so do call in and see for yourself.

At the beginning of the month we celebrated a true village Christening with a service at St John's for Betty Turnbull. After the service, all the family and friends and a few villagers joined together for a tea-party also held in the church.

Later in October we had a very successful and well attended Harvest Supper at the village hall on Saturday 7th. Tickets had been sold out for some time before the event. There was a table top quiz and Raffle- and of course lots of scrumptious home cooked food- huge thanks to all those who helped serve and baked, particularly Lionel who made the Harvest Sheaf.



This was followed by a "Reflection on Harvest" service on Sunday evening. Alongside the usual poetry, readings and thought provoking music we also sang two traditional and much loved Harvest hymns. Produce from the festival will be distributed to the Food Bank and a collection was taken for WaterAid.

Looking forward this month we have the Bonfire Party - which has had to be cancelled over the last two years because of the weather - we hope for a successful event this year. It will be held on either the 3rd, 4th or 5th of November, depending on weather conditions.

*Continued on page 35*



## Enjoy your later life at Home Instead

We believe as you age, you should continue to live your life in the comfort of your own home.

Home Instead Dorchester are an award-winning care provider that supports individuals to remain as independent as possible by providing in-home care services.

### *We can help with:*

- ♥ Companionship
- ♥ Help Around the Home
- ♥ Personal Care
- ♥ Preparing Meals & Drinks
- ♥ Specialist Care
- ♥ And so much more

### *Benefits of Home Care*

- ♥ The security and comfort of living in a familiar environment.
- ♥ Avoiding the potential stress associated with selling a family property.
- ♥ Safeguarding inheritance.
- ♥ The prevention of separation from cherished pets.
- ♥ The ability to pick what and when to eat, with prepared meals available upon request.
- ♥ Couples and partners who are married may continue to live together.

If you would like to know more, contact **Home Instead Dorchester** for more information

**01305 239289**  
[Homeinstead.co.uk/Dorchester](http://Homeinstead.co.uk/Dorchester)

Thanks as ever to Jonathan and Sue, who together with Ray and Tom de Witt put so much effort into the planning and preparation - plus the host of soup makers and servers.

Several other dates for your diary-

Sunday December 10th- Carol Service in St Johns- 5 pm

Sunday December 17<sup>th</sup>- Carols and Christmas Songs in the Pub with Raffle in aid of Children's Society

There are many unsung heroes working hard to keep the church afloat- some keeping the living churchyard tidy, others cleaning and repairing inside and out, refreshing the wild flower decorations that brighten the building, locking and unlocking daily and of course keeping the services going. We still have the regular Holy Communion services at 9:30 on the first and third Sundays, a quiet reflection service at 5:30pm on the second Sunday and our livelier Go Fourth service at 10am on the fourth Sunday of the month. Thanks go out to all involved.

*Hilly and Jayne*

## **Tolpuddle Events Committee (TEC)**

As always the Tolpuddle Harvest Supper was a brilliant evening. The village hall looked beautiful, with lovely autumnal flower arrangements by Marion and Jane, tables looking elegant and soft lighting to set the mood! Delicious homemade food was provided by our excellent village volunteer cooks, including the traditional 'sheaf of corn' bread baked by Lionel. The raffle had some super prizes and as always there was a head-scratching brain teaser to keep us occupied between courses. Many thanks to everyone who worked so hard behind the scenes, and to Hilly for organising.

Our fireworks event on Friday 3rd November is promising to be a fantastic evening, with free parking, homemade soup included with your ticket, a pay bar, BBQ and live music. Pay on the gate - £8 per adult, free for children 12 and under, or £20 a family of four. Gates open at 6.00, fireworks at 7.00. If the weather lets us down we will reschedule for the 4th or 5th. Check our village website for details. Then we turn our attention to Christmas! There will be the Christmas Craft Fair and Christmas Light Up on 9th December, and the children's party will now be on Sunday 10th December in the Village Hall.

After Christmas we have a Quiz and Chips evening planned for Friday the 12th January and there will be a certified first aid course in March. More details to follow and everything can be found on the website -

<https://www.tolpuddlevillage.co.uk/>

**A.M.T Building & Gardening Services**

**Andy Thorne**  
**Stone Bungalow, Burleston**

**Tel; 01305 848188**

**Mob; 07970824511**

**e-mail; andrewt.thorne930@  
googlemail.com**

**Most Aspects of Building & Gardening  
Maintenance undertaken.**

**Grasscutting and Hedgetrimming.  
Brickwork and Blockwork.  
Carpentry and Timber Structures.  
Decking, Patios & Concrete Bases.  
Painting and P. V. C. Fascias,  
Soffits and Guttering.**

**Free Written Estimates. No V.A.T.**

**Art Res Q,s Art Classes**

Willoughby Cottage

Puddletown

A choice of your own subject in any media you choose.

Wednesdays 10.30-12.30

Call for details 07970675429

[g.s.lacey@btinternet.com](mailto:g.s.lacey@btinternet.com)

Qualified Art Tutor Gilly

We aim to improve your level of skill



Pet portraits Commissions



**CHRIS RAWLINGS**  
**Building and General Maintenance**

**FREE QUOTATION**

**FULLY INSURED**

**Extensions  
Re-Pointing  
Plastering  
Painting  
Brick and Block Work**

**Fascia, Soffits and Guttering  
All Garden Works  
Patos  
Driveways  
Fencing**

**Call Chris on 07833467176 Or 01305 251974**

**[chris.rawlings01@yahoo.co.uk](mailto:chris.rawlings01@yahoo.co.uk)**

**[www.chrisrawlingsbuildingandmaintenance.co.uk](http://www.chrisrawlingsbuildingandmaintenance.co.uk)**

# Major Works in Tolpuddle

A £750,000 project to connect properties in Tolpuddle to the public sewerage network is under way this autumn.

Wessex Water are extending the network in the east of the village to ensure an additional 12 properties on Trent Close – that previously operated with private system – can be connected.

The complex scheme got started in September and is expected to be completed by February of next year.

Project manager Lucy George said: “The depths of the dig required and proximity to residents’ houses make this a challenging construction that requires a significant amount of tunnelling.

“But we are progressing well with constructing a shaft, followed by the pumped main and gravity sewer in nearby Dorchester Road.

“We’ve been working closely with the residents of Trent Close, holding a drop-in session for them prior to work getting under way and look forward to completing the work so that they can be connected to the public system as quickly as possible.”

*Lucy George*

*Wessex Water project manager*



**DO YOU NEED HELP WITH PROBATE?**

Obtaining a Grant of Probate and dealing with the administration of an estate is not always easy or straightforward. We understand that you want to get through the process as quickly and cost effectively as possible.

If you need help from a solicitor to administer an estate, you will find our charges are very reasonable. We can explain the process and provide the help you need to deal with all aspects of the administration on a fixed fee, so you know from the start how much it will cost.

We provide friendly, expert advice in your own home (when permitted) and remotely, to help you administer the estate as quickly as possible.

All initial enquiries are free of charge and without obligation, so you have nothing to worry about.

Please call us on: 01308 424808 or email: [christine@winterbornelegal.co.uk](mailto:christine@winterbornelegal.co.uk)

**Winterborne Legal Services**

[www.winterbornelegal.com](http://www.winterbornelegal.com)

Probate and Estate Administration | Wills | Lasting Powers of Attorney



Authorised by CILEx Regulation

**I.J.SPILLER & SONS**  
**PAINTERS & DECORATORS**  
**PROPERTY MAINTENANCE**  
**EXTERIOR & INTERIOR**  
**FREE ESTIMATES**

Tel: PUDDLETOWN

Office:- 01305 848523

Mobile:- 07825 184683

**E-mail : [nspiller@btinternet.com](mailto:nspiller@btinternet.com)**

**REFURBISHING DORSET PROPERTIES WITH A QUALITY SERVICE**

# **TOLPUDDLE 2023 BONFIRE AND FIREWORKS MARTYRS MUSEUM FIELD DT2 7EH FRIDAY, 3 NOVEMBER GATES OPEN 6 PM**

Bonfire and Fireworks from 7pm

**ADULTS AND ALL AGED 13+ £8  
FAMILY OF 4 £20  
CHILDREN 12 AND UNDER FREE  
ENTRANCE INCLUDES HOMEMADE SOUP  
PAY ON THE GATE  
FREE CAR PARKING**

Live Music "Bere Essentials"

**BBQ** Bar  
**Homemade Soup** Hot Drinks

Card Payments or Cash

**PLEASE CHECK ON THE VILLAGE WEBSITE  
WWW.TOLPUDDLEVILLAGE.CO.UK  
AND TOLPUDDLE FACEBOOK PAGE  
FOR UPDATES AND CHANGES**

Note: if bad weather Event may be moved to Saturday or Sunday

In aid of St John's Church and Tolpuddle Village Hall

Thanks to the TUC for providing the venue

Huge thanks to our sponsors including

Grasbys Funeral Service; Athelhampton House; PGonline; Barry Lovelock;  
Greendale Construction; Poundbury Wealth Management; The Watercross Co

Any Questions? email: [tolpuddleevents@gmail.com](mailto:tolpuddleevents@gmail.com)

## Do you run holiday accommodation or a local business?

The new Tolpuddle and Southover Village website [www.tolpuddlevillage.co.uk](http://www.tolpuddlevillage.co.uk) has a Local Accommodation page and we would love to hear from you if you would like to add your holiday accommodation.

We also have a Local Business page and again, please do get in touch if you would like to advertise your business.

We look forward to hearing from you. Please email: [tolpuddlevillagewebsite@gmail.com](mailto:tolpuddlevillagewebsite@gmail.com)

## PICTURE FRAMING

Over 20 years experience. Large range of frame mouldings and mount colours.

Five types of glass.

Needlepoint and Tapestries,

Stretching and Framing.

Mirrors made to order

Telephone 01305 265137 to arrange an appointment or home visit.

R.A. Clarke-Williams

THE CHEST OF DRAWERS

DORCHESTER

44 Manor Road, Dorchester, DT1 2AX

Blanchards Bailey  
Solicitors

With you for  
life's journey



[www.blanchardsbailey.co.uk](http://www.blanchardsbailey.co.uk)  
Call us on: 01305 251 222

MANNA CATERING  
KITCHEN SERVICES

CALL US ON 01305 851 551

buffets ★ canapes ★ desserts  
★ platters ★ private chef hire ★

[www.mannakitchen.co.uk](http://www.mannakitchen.co.uk)





## Evening Class - Christmas themed pottery

Tolpuddle Village Hall

9th November 2023 at 7.30pm

Using a handbuilding grogged clay you might like to make a Christmas tree shaped tealight, decorations or elf door. £25 includes kiln firing. Pieces will be returned 2-3 weeks later.

Pre booking only.

Please email [creativeclayforall@yahoo.co.uk](mailto:creativeclayforall@yahoo.co.uk) to book your space.




**live happy!**  
with  
Slimming World

**Now at**  
**Sports Pavilion, Lane End, Milborne St Andrew**  
**On Monday evenings at 7.30pm**  
**Call Julie 07871 821928 for more details**

for the delicious worry-free eat  
[slimmingworld.co.uk](http://slimmingworld.co.uk)  
@ 0344 897 8000





**Food Bank**  
**For YOU**  
**In**  
**St John's Tolpuddle**

**(Come and help yourself)**

# Combens

## Dorchester Shop Now Open!



Broken Dishwasher?

Washing Machine in Need of an Upgrade?

Need Help Picking the Right TV?

Pop in or Give us a Call!

Dorchester, Poundbury, DT1 3DY 01305 269988

[WWW.COMBENSAPPS.CO.UK](http://WWW.COMBENSAPPS.CO.UK)

## Milborne St Andrew Church News

October began with our Harvest Thanksgiving, led by Tony. What a joy it was to see so many there! Stephanie made a beautiful Harvest Loaf, which her daughter Hazel presented at the Altar. (Stephanie very kindly made another loaf for the school service.) Thank you to all who brought items for the Blandford Foodbank and to John and Josie for delivering them for us. Next year, we hope to team up with the First School. The Church looked beautiful; we are grateful to those who arranged flowers or brought gifts of Fruit and Veg, including some magnificent courgettes/marrows. Monetary donations for the produce have been sent to WaterAid. The First School Harvest Service was a wonderful occasion, and it was good to welcome so many families and friends to watch the children. Poetry, Mosaics illustrating the four seasons, lively singing and a real sense of thanksgiving made it a joyful occasion. Congratulations to all who took part and planned the service.

November is often referred to as the “Month of Remembrance”. All Souls’ Day is traditionally observed on November 2<sup>nd</sup>. This year’s Service for the Benefice, when we remember “Those we love but see no longer”, will be held in Milborne Church at 3 p.m. on Sunday, the 5<sup>th</sup>. If you would like names remembered, please contact the Vicar or one of the Churchwardens. All are welcome to come and light a candle. The Service will be followed by tea and cake.

Remembrance Sunday falls on November 12<sup>th</sup>, and we will meet in Church at 10.00 for a Service of Remembrance and then process to the Memorial Stone for the Parish Act of Remembrance at 11.00. As we recall the sacrifice of former generations, the need to pray for peace in our war-torn world is even more urgent,

The news that Maggie, our Curate, will leave us was announced on October 8<sup>th</sup> and came as a body blow. Maggie cares for her elderly parents, and her accommodation in Puddletown is not suitable for the long term. The Diocese has found a house in Gillingham, but it is too far for Maggie to commute, so she will continue her Curacy in the Shaftesbury Team Ministry. Their gain is a most definite loss to us in Milborne and in the Benefice. Maggie’s last Service will be the Benefice Service on October 29<sup>th</sup>.

In view of various changes, the Service on the first Sunday of each month will be renamed Milborne Praise and will be led by Tony. It will follow a similar pattern to that used for the Harvest Service (but without the vegetable puns) and will be more, or less, formal according to the theme. The first one, on Sunday, 5<sup>th</sup> November, will commemorate All Saints’ Day. Come along and give thanks for saints past and present. Pam has indicated that she is willing to continue organising Worship in Stillness on the third Sunday of each month, with the possibility of others helping from time to time.

We send our love and best wishes to Daphne Knight, who celebrated her 90<sup>th</sup> birthday on October 14<sup>th</sup>. We give thanks for all that she, and Philip, contributed to the life of St. Andrew’s over many years. Thank you, Daphne.



more\* than a movie  
at the Village Hall  
on the BIG screen

\*Enjoy an **ICE CREAM** or a  
**DRINK** and the **MOVIE**  
for an all-in ticket price of  
**just £6.00**

Cash / Card accepted

BASED ON THE BESTSELLING NOVEL BY RACHEL JOYCE

Jim **BROADBENT**

Penelope **WILTON**



The Village Hall - Milborne St Andrew - DT11 0JX

At the end of the month, we celebrate St Andrew's Day as we give thanks for our Church and Community.

*Tony & Pam,  
Churchwardens*

## Milborne St. Andrew Gardening Club

We learnt a lot from Steve Jeffries of Dobbies Garden Centre about autumn colour in our gardens in October. This month we hold our last meeting of the year in the village hall on Thursday 16<sup>th</sup> November at 7.30pm, which will be a short AGM followed by a quiz, mulled wine and refreshments. The annual winner of the monthly competition will be announced.

Visitors are very welcome!

*Angela Johnson*



## Puddletown Pumpkins

Puddletown Village Hall, High Street, Puddletown, Dorchester, DT2 8RX

**every Thursday 9:30am-11:30am during term time**

come and join our friendly baby and toddler group!

play, activities, snacks and rhyme time for the littles, and for the bigs -

enjoy a cuppa and a chat!



**Just £3 per family!**

Join us on Facebook and Instagram

@puddletownpumpkins





**The  
Carpet Company**  
THE KARNDEAN EXPERTS

[www.thecarpetcompany.co.uk](http://www.thecarpetcompany.co.uk)



Visit us at:  
Pouncy Hall, Liscombe Street,  
Poundbury, Dorchester  
DT1 3DF  
01305 261886



Visit us at:  
7A Littlemoor Road,  
Chalbury Corner, Preston,  
Weymouth DT3 6LA  
01305 760908



# Milborne Ladybirds Playgroup

## Autumn - Time For A Change

October started mild and at times it was as warm as the summer. So Ladybirds have played outside enjoying digging in the mud area looking for worms and filling tipper trucks with soil. "I'm building a house" announces a little boy re-enacting what he's experiencing watching his home extension. We love it when children connect parts of their lives and experiences.



We currently have a very young cohort which is keeping us on our toes and involves much more sensory messy play. This has included water and rice (not at the same time) for pouring and filling; flour for mark making; corn flour gloop and of course the ever-popular play dough. As we moved into autumn, we painted a group picture of an autumn tree using broccoli florets instead of paint brushes. Plenty of opportunities to mix paints to

produce autumn colours – and it seems whatever colours you start with you always end up with brown!

We have covered the story of Goldilocks and the Three Bears, with re-telling of the story with the doll's house and little teddies. We had bigger teddy bears in the role play area which ended up as a hospital. Lots of cups of tea (that age old remedy) being made by the youngsters, somethings never change. To give the children practice of using a knife for spreading they made teddy-face muffins with chocolate spread, banana slices and raisins. Plenty of mess but they children enjoyed making and eating them.



By the time you read this we hope to have moved into the First School. Rather frustratingly we are dependent on when Ofsted endorse the move. All has been requested and as with all Government bodies we must wait – chasing them is a nightmare as getting to talk to someone is near on impossible. We really are looking forward to being in school – no more setting up/packing away into sheds!!

*Liz Dyer (Leader)*

*01258 839117 or 07771 512427*

*Kelly Haggett (Secretary)*

*secretary@milborneladybirds.com*

[www.milborneladybirds.org.uk](http://www.milborneladybirds.org.uk)



## Sue Adams Law

I am a sole solicitor practice based in Tolpuddle and operating throughout Dorset and beyond. I have over 35 years' experience as a lawyer.

### Specialising in:

Wills // Trusts // Tax and estate succession planning  
Probate // Lasting powers of attorney

I offer an expert, cost effective and personal service. Please contact me for an introductory chat and for more information.



[sueadamslaw.com](http://sueadamslaw.com)

01305 457807

[info@sueadamslaw.com](mailto:info@sueadamslaw.com)



Sue Adams Law is authorised and regulated by the Solicitors Regulation Authority under registration number 8003077.

# R2 ELECTRICAL LTD

Testing and Inspection, certification of commercial and domestic premises.

NICEIC registered contractor .ECR's , EICR's, Minor works.

Fault finding, installation, re-wires, new builds, garden offices, led upgrades, EV Charge Point.

Local electrical services, Puddletown

07782148696 / 01305849192

[r2electricaltd@gmail.com](mailto:r2electricaltd@gmail.com)

[r2electricaltd.com](http://r2electricaltd.com)







## Milborne St Andrew First School

This term the Bluebell class are exploring where food comes and which foods help our bodies. We were very excited to have had a trip to Wessex Wild to kick start our learning. We had a wonderful day for the 'The Story of your Lunchbox' workshop where we learnt about the farm

and how Chrissy uses a drone and satellites to track where her cows are. The class explored the growing patches where we picked fresh fruit and vegetables, understanding which part of the plant we eat. At lunch we tasted some new fruits and vegetables, with some of us pulling funny faces when tasting celery. We are looking forward to finding out more in the classroom.



We were lucky enough to be awarded a grant from The Harmony Project as a nature premium to develop our school allotment. As a result we have now got 3 fabulous new growing beds and 3 new residents! We have yet to name our new chicks who hatched out at the end of summer in Mrs Cheeseman's garden and decided to stay at our school after meeting our children as tiny chicks during the first week back. Learning about where

our food comes from and the strength in diversity that nature shows us is vital for a healthy system. These are core aspects of our curriculum and our children are loving caring for the chickens and learning about the hard work that goes into 'growing your own'. Lily and Nicky from The Edible Acre in Crossways, a fabulous local producer, are partnering with us to support our learning. We are delighted that our children now get to visit 2 local farms every year and get hands on in the allotment as part of their learning in school which helps set them up for a sustainable and healthy future.



Honeysuckle Class went to the Dorset County Museum and Roman Townhouse in Dorchester to learn more about the Romans of Durnovaria. We were very fortunate to be able to see the mosaics in the townhouse, we handled real Roman artefacts and we dressed up as Romans from the different social classes. It was great fun!

# Are you passionate about your local area?



Do you want to make a difference in your local community?



Would you like to offer your skills & experiences?



Do you enjoy being part of a team?

## Join Puddletown Area Parish Council

If you care about where you live and are passionate about your community, **WE NEED YOU**

To find out more contact: Michelle Harrington, Parish Clerk.

e: [clerk@puddletownareaparishcouncil.gov.uk](mailto:clerk@puddletownareaparishcouncil.gov.uk)

t: 01202 670105

# PUDDLETOWN AREA PARISH COUNCIL

For all the latest information regarding what the Parish Council is doing for you, please keep reading or visit our Facebook page <https://www.facebook.com/PuddletownAPC>

**The Coombe:** Over the last several months due to the stabilisation's issues of the bank, Puddletown Area Parish Council have been looking into the ownership of the trees and land at The Coombe. As soon as the ownership can be proven, Puddletown Area Parish Council will work to ensure the area is stable.

**PCSO Report:** PCSO Alison Donnison from the Dorchester East Rural Neighbourhood Policing Team attended the October Parish Council meeting held in Tolpuddle. Alison talked through how all anti-social behaviour, and criminal activities can be reported to Dorset Police via the Dorset Police website <https://www.dorset.police.uk/>, then click on "Report" and follow the prompt boxes. Alison reminded us if there is risk to life call 999.

If you wish to see more Police presence in the Parish, then please make sure to report any incident no matter how small. Dorset Police can then monitor the trends and allocate more time for patrols our area.

**Orchard Meadow Management Plan:** A couple of months ago, Cllr Johnstone was appointed Orchard Meadow Representative, and since his appointment Jim has been working hard with the Clerk to create a new Orchard Meadow Management Plan. The plan will set out for all parties involved, a clear set of guidelines, along with the long-term plans for the area, including the possible addition of a new flat seat swing unit. To have your input on the plan, full details can be found on our website <http://www.puddletownareaparishcouncil.co.uk>.

**Benches around the Parish:** Several benches around the parish have been identified as in need of replacement due to rot starting to take hold. In the September Puddletown Area Parish Council meeting, it was agreed to start replacing the benches around the parish, starting with the round 8-seater bench plus the picnic benches within Orchard Meadow.

**Next Council Meeting** – Our meetings are held on the second Tuesday of each month, alternating between Puddletown Village Hall and Tolpuddle Village Hall. Our next meeting is Tuesday 14<sup>th</sup> November 2023, at 7pm in the Puddletown Village Hall. To start the meeting is a public half hour, so please come and join us and have your say.

**Parish Council contact details:** (Please remember to give permission for your details to be shared with Councillors, but note your details will NOT be shared with anyone else)

Clerk: Michelle Harrington, Telephone: 01202 670105,

Email: [clerk@puddletownareaparishcouncil.gov.uk](mailto:clerk@puddletownareaparishcouncil.gov.uk),

Write: 34 Egmont Road, Poole Dorset BH16 5BZ, Facebook: [https://](https://www.facebook.com/PuddletownAPC/)

[www.facebook.com/PuddletownAPC/](https://www.facebook.com/PuddletownAPC/), Website: [http://](http://www.puddletownareaparishcouncil.co.uk)

[www.puddletownareaparishcouncil.co.uk](http://www.puddletownareaparishcouncil.co.uk)



**MILTON ABBAS RDA**

**presents**

## **A Race Night**



**Saturday 25<sup>th</sup> November 2023**

**Winterborne Whitechurch Village Hall**

**Entry by ticket only - £10 per person**

**(price includes fish 'n' chip supper)**

**Doors Open: 7:00 - under "Starters Orders":  
7:30**

**For tickets ring Sue Hodder on 07739 469946**

**or email [sue.hodder01@talktalk.net](mailto:sue.hodder01@talktalk.net)**

# Cafe



COMMUNITY

Sunday 26<sup>th</sup> November

## CHRISTMAS CAFÉ

10am – 2pm in the Village  
Hall

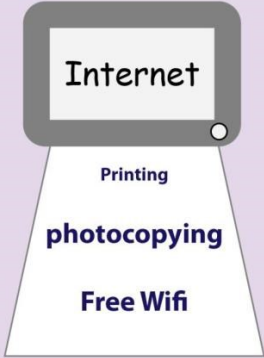
Join us for coffee, tea, bacon sandwiches, cakes, and local stalls. Or just come for a chat! Our last café of the year is a great place to get into the festive spirit.

We'd love cake makers and stall holders. If you can help, send us a message, or email us at [puddcommcafe@gmail.com](mailto:puddcommcafe@gmail.com)

[www.facebook.com/PuddletownCommunityCafe](https://www.facebook.com/PuddletownCommunityCafe)

E-mail [puddcommcafe@gmail.com](mailto:puddcommcafe@gmail.com)





Internet

Printing

photocopying

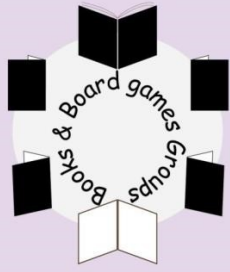
Free Wifi



Puddletown Community Library  
More than just book loan  
[puddletownlibrary@gmail.com](mailto:puddletownlibrary@gmail.com)



The library welcomes  
new volunteers  
to help run the library



LIBRARY HOURS:  
Wednesday 3pm-5pm  
Friday 10am-12pm  
Saturday 10am-12pm

## Dewlish Church Notes



A BIG THANK-YOU to Tina and family who, once more, held a Table Top Sale, and raised £105.20 for our Church Fabric Fund. We know how hard you have worked for us, and are most grateful.

Our Harvest Festival, led by Maggie, was well-attended. The church looked so beautiful, and bountiful. Thank you to everyone who provided flowers and donations of produce. On the next night we held our Harvest Supper and Auction which, again, was well-attended. We thank Andy for organising the food provision and preparation, ably assisted by Nonie and by Andrew who conducted the auction in such a brilliant way. We all had a lovely evening. The auction raised £206, which has been donated to WaterAid. Thank you to everyone for making the evening such a success.

And so we get to November! Where has this year gone?

**Remembrance Sunday** is on November 12<sup>th</sup>, and our service will start at the War Memorial at 10.50am with the laying of the wreath, and this will be followed by the service in church. Afterwards, we invite you to join us in the Village Hall for refreshments.

Just a forward note: Our **Christmas Bazaar** will be held on Saturday 2<sup>nd</sup> December at 2.30pm in the Village Hall. All the usual Christmassy stalls will be on show so, please, save the date.

*Daphne Burg*



The vicar got a little carried away with the church's new state-of-the-art PA system

# St George's Children's Choir



A new Children's Choir is starting at St George's Church Hall,  
Fordington on **Friday 22 September at 5.30pm**  
**If you are interested, do come along**

## WHO IS IT FOR?

- Anyone (Year 1 to Year 13) is more than welcome to try it out

## WHAT WE DO

- We prepare music for **special services** such as Harvest and Christmas

## REHEARSALS

- Rehearsals take place in **St George's Church Hall on Fridays from 5.30 – 6.15**. *Do come along one week and try it out*
- Each rehearsal will include some technical vocal exercises as well as learning songs, hymns and carols

***Please do not hesitate to get in touch if you have any questions:  
Mim Newton 01305 266777***





## A new challenge!



### Are you looking for a new challenge and can give an hour or two of your time?

Tolpuddle Old Chapel Trust is looking for enthusiastic volunteers who can make a contribution to our continued work to preserve a unique and historic building, as well as provide a new amenity for the village and surrounding areas.

A wide range of opportunities are available – stewarding, supporting educational visits, fund-raising, maintenance, planning and organising events, finance.

- No specific experience required
- Training offered
- Work as part of a team
- Meet new people
- Learn about and gain experience of the heritage sector

### Bring a friend or two!

Interested? Drop into the Tolpuddle Old Chapel or email [deliverymanager@tolpuddleoldchapeltrust.org](mailto:deliverymanager@tolpuddleoldchapeltrust.org)



## Tolpuddle Old Chapel



We are now open to visitors

every Monday and Thursday morning  
from 10:00am – 12:00pm

Come and find out about our tangible link to the Tolpuddle Martyrs.

Find out about the previous lives of the Chapel.

Come and sit for a while in the peace and quiet of this historic place.

Entry is FREE



## Stained Glass workshop



at Tolpuddle Old Chapel

Wednesday 25 October or

Saturday 4 November 2023

10:00am – 12:00pm

This workshop is FREE

Led by Keith Baddams, the workshops will cover:

- Good practice, safe practice and the tools and equipment needed.
- Demonstrations of three different techniques including traditional lead glazing, Tiffany style copper foil and stained glass mosaic work including some hands-on opportunities.
- Take away lists of suppliers, Facebook sites and free to download patterns will be made available.

To book your place, please email:

[deliverymanager@tolpuddleoldchapeltrust.org](mailto:deliverymanager@tolpuddleoldchapeltrust.org)

### About Keith:

Keith started appreciating stained glass when attending Sunday School in the 1960s. Working with stained glass has been immensely satisfying and rewarding for Keith over the last 40 years and since moving to the west country 30 years ago, he has focused on the restoration of lead glazed windows in some incredible listed buildings across the south-west and beyond.



## Dorset Button Making at The Old Chapel, Tolpuddle



Do you know your cross-wheel from your Singleton,  
your Grindle from your Knob?

Learn to make some of these traditional Dorset buttons at our workshops run by experienced embroiderer and Dorset button maker, Ros Atkins.

**Saturday 7 October 2023** 10:30 – 12:00

Basic Dorset Cross Wheel Button (Introduction, suitable for beginners)  
Cost £25

**Saturday 18 November 2023** 10:30 – 12:30

Cross Wheel Development including colour, patterns and beads.  
Follow-on workshop from Basic Dorset Cross Wheel. Cost £25

**Saturday 2 December 2023** 10:30 – 12:30

Dorset Button Making Christmas Decoration  
Suitable for all. Cost £25

All materials and equipment will be provided.

To book your place on one or more workshops, please go to Ros' Folsky site at

<https://folsky.com/shops/RosalindAtkins>

### Did you know?

Dorset buttons have been hand-made locally since the early 17<sup>th</sup> century, the craft starting in Shaftesbury, north Dorset. It was a cottage industry that made an important contribution to the Dorset rural economy with top quality buttons sold in London and exported. Dorset buttons were traditionally made on looms.

Find out more about Ros and her crafts at [www.rosatkinsmokingdorsetbuttons.co.uk](http://www.rosatkinsmokingdorsetbuttons.co.uk)



# **Colsan Property Services.**

**Complete property maintenance.**

**Lime pointing specialist.**

**General repointing work.**

**Heritage work.**

**Listed properties.**

**Blockwork, Brickwork.**

**Patios.**

**Planned and reactive maintenance.**

**Garden clearance.**

**Fence work.**

**Painting.**

**Insurance contracts.**

**We cover Dorset, Hampshire and surrounding areas.**

**Fully insured.**

**Mob; 07769890695.**

**Email; colsanenquiries@yahoo.co.uk**

## Services in the Benefice

### Saturday 4th November

4.00pm	Geordie Keelan & Lisi Christofferson	Puddletown
--------	--------------------------------------	------------

### 5th November - All Saints' Sunday

**Psalm 34.1-10; Revelation 7.9-17; Matthew 5.1-12**

9.30am	Parish Communion	Tolpuddle
9.30am	Milborne Praise	Milborne
11.00am	Parish Communion	Puddletown
11.00am	BCP Morning Prayer	Dewlish
3.00pm	Service of remembrance and thanksgiving	Milborne

### 12th November - Remembrance

**Psalm 70; Amos 5.18-24; Matthew 25.1-13**

10.00am	Service of Remembrance <i>(followed by procession to the Memorial Stone for 11am)</i>	Milborne
10.50am	Remembrance Sunday Service	Puddletown
10.50am	Remembrance Sunday Service <i>(starting at the War Memorial at the Crossroads)</i>	Dewlish
5.30pm	Sunday Reflections	Tolpuddle

### 19th November - 2 before Advent

**Psalm 90.1-8,12; Zephaniah 1.7,12-18; Matthew 25.14-30**

9.30am	Parish Communion	Tolpuddle
9.30am	Worship in Stillness	Milborne
11.00am	Parish Communion <i>(with emptying of Children's Society boxes)</i>	Puddletown
11.00am	Family Service	Dewlish

### 26th November - Christ the King

**Psalm 100; Ezekiel 34.11-16,20-24; Matthew 25.31-46**

9.30am	Parish Communion	Milborne
10.00am	Go Fourth	Tolpuddle
11.00am	BCP Matins (traditional language)	Puddletown
11.00am	Parish Communion	Dewlish

### **MORNING PRAYERS (Mon. – Thurs. 8.30 a.m.; Sat. 9.00 a.m.)**

On Zoom, please contact Sarah Hillman ([sarah.c.hillman@outlook.com](mailto:sarah.c.hillman@outlook.com)) for the link (Please note that the calendar of services may be subject to change)



## MAIDEN CASTLE HOUSE

A Care South home for  
residential and dementia care

As voted for by residents in our  
care, their families and friends



9.8/10 – April 2023

“ My grandmother is in great hands – she  
loves it at Maiden Castle House. We were  
so lucky to find a perfect care home. ”

A real review taken from carehome.co.uk

Contact us today to see how we can help  
create a new home for you or a loved one



In the heart of  
your community



01305 237652 | [care-south.co.uk](https://care-south.co.uk)

Maiden Castle House  
12-14 Gloucester Road  
Dorchester | DT1 2NJ



Care  
South

Care South is a not-for-profit charity.  
Registered Charity No. 1014697

It's the care that counts.